



MATERIALS

Bernat® Lattice™ (7.8 oz/220 g; 389 yds/356 m)

Contrast A Cherry (19006) **3 balls or 949 yds/868 m**

Contrast B Rose Mix (19001) **2 balls or 447 yds/409 m**

Size U.S. H/8 (5 mm) Susan Bates® Silvalume® crochet hook **or size needed to obtain gauge.** Susan Bates® yarn needle. 14" x 32" [35.5 x 81.5 cm] pillow form.



CROCHET | SKILL LEVEL: **EASY**

ABBREVIATIONS

Approx = Approximately

Beg = Begin(ning)

Bobble = Working in front of work, [(Yoh) twice and draw up a loop. (Yoh and draw through 2 loops on hook) twice] 5 times in indicated stitch. Yoh and draw through 6 loops on hook.

Ch = Chain(s)

Cont = Continue

Dc = Double crochet

Dcbp = Yoh and draw up a loop around post of next stitch at back of work, inserting hook from right to left. (Yoh and draw through 2 loops on hook) twice.

Dcfp = Yoh and draw up a loop around post of next stitch at front of work, inserting hook from right to left. (Yoh and draw through 2 loops on hook) twice.

Hdc = Half double crochet

Rep = Repeat

RS = Right side

Sc = Single crochet

Sl st = Slip stitch

St(s) = Stitch(es)

Tog = Together

WS = Wrong side

Yoh = Yarn over hook

MEASUREMENTS

Approx 14" x 32" [35.5 x 81.5 cm].

GAUGE

16 dc and 9 rows = 4" [10 cm].

INSTRUCTIONS

Note: Ch 3 at beg of row counts as dc.

PILLOW FRONT

With A, ch 59.

1st row: (RS) 1 dc in 4th ch from hook. 1 dc in each ch to end of chain. Turn. 57 dc.

First row of chart is complete.

Note: Chart is shown on page 2.



FRONT



BACK

Cont working chart, noting each Contrast A square is 1 dc and each Contrast B square is 1 bobble, *reading RS rows from **right to left** and WS rows from **left to right***. Carry color not in use across top of entire previous row and work sts around it. This will ensure even gauge as all sts will be worked around an extra strand of yarn held across top of previous row. Carry both shades up side of work.

Cont working chart until 63rd row of chart is complete. Fasten off.

PILLOW BACK (make 2 pieces alike).

With A, ch 59.

1st row: 1 dc in 4th ch from hook. 1 dc in each ch to end of chain. Turn. 57 dc.

2nd row: Ch 2 (**does not** count as hdc). 1 hdc in first st. *1 dcfp around next dc. 1 dcbp around next dc. Rep from * to last st. 1 hdc in last dc. Turn.

3rd row: Ch 2 (**does not** count as hdc). 1 hdc in first st. *1 dcbp around next dc. 1 dcfp around next dc. Rep from * to last st. 1 hdc in last st. Turn.

Rep 2nd and 3rd rows for 2½" [6.5 cm].

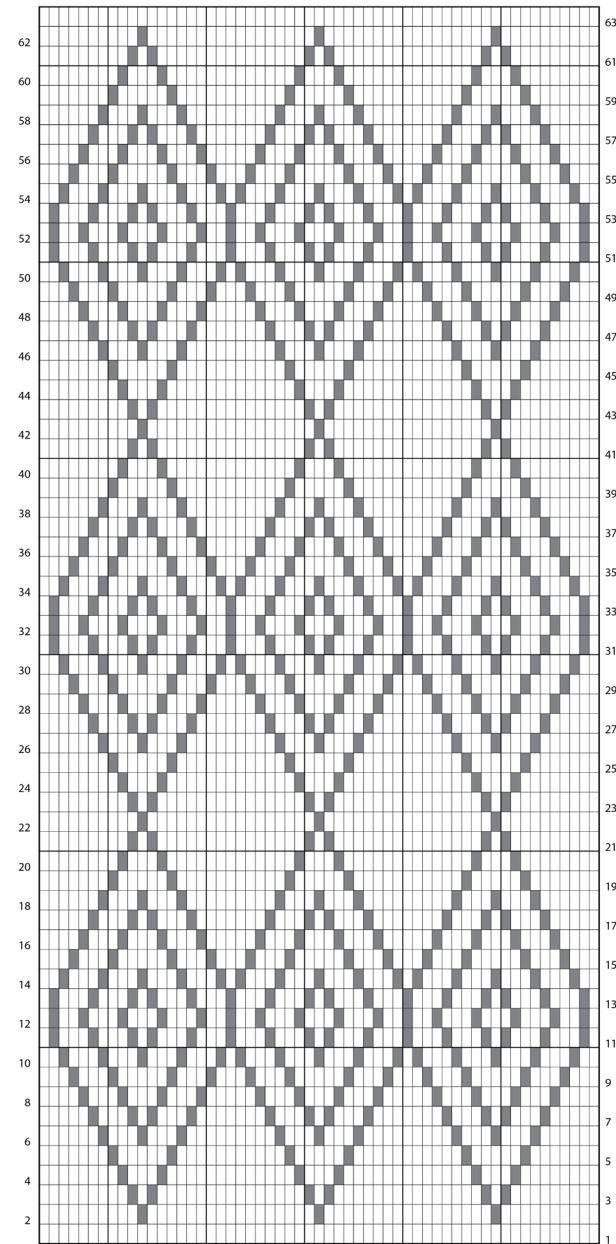
Next row: Ch 3. 1 dc in next st. 1 dc in each st to end of row. Turn.

Rep last row until work from beg measures 16½" [42 cm]. Fasten off.

FINISHING

Pillow Assembly

Holding WS tog, overlap Back pieces to match Front in center to create opening to insert pillow form. *Working through both thicknesses*, join A with sl st in corner. Ch 1. Work sc evenly around, having 3 sc in each corner. Join with sl st to first sc. Fasten off.



KEY

- = Contrast A (1 dc)
- = Contrast B (1 bobble)

Start here