



CROCHET | SKILL LEVEL: **INTERMEDIATE**

ABBREVIATIONS

Approx = Approximate(ly)

Beg = Beginning

Ch = Chain(s)

Cont = Continue(ity)

Hdc = Half double crochet

Hdcbp = Yoh and draw up a loop around post of next stitch at back of work, inserting hook from **right to left**. Yoh and draw through 3 loops on hook.

Hdcfp = Yoh and draw up a loop around post of next stitch at front of work, inserting hook from **right to left**. Yoh and draw through 3 loops on hook.

Rep = Repeat

RS = Right side

Sc = Single crochet

Tog = Together

WS = Wrong side

Yoh = Yarn over hook

MATERIALS

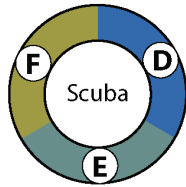
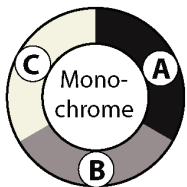
Bernat® Blanket™ O'Go™ (10.5 oz/300 g; 220 yds/201 m)

Monochrome (42001)

1 O'Go

Scuba (42015)

1 O'Go



Size U.S. L/11 (8 mm) crochet hook **or size needed to obtain gauge.**
Yarn needle. 20" [51 cm] square pillow form. Yarn needle.

MEASUREMENT

Approx 20" [51 cm] square.

GAUGE

7 dc and 8 rows = 4" [10 cm].

INSTRUCTIONS

Notes:

- To begin working with the O'Go format, carefully cut plastic tie where the ends of the O'Go meet.
- Pull tie to remove.

- For this pattern, colors can be easily separated by gently pulling apart and cutting at the color transition. Each color is ready to use. Follow color guide shown in Materials section for each O'Go (Contrast A, B, C, D, E and F). You may find it helpful to place each color section in its own resealable (zip lock) bag and label each bag – A, B, C, D, E, F.

FRONT

With A, ch 36.

Working Chart, noting each square of chart is equal to 1 sc and reading RS rows from **right to left** and WS rows from **left to right**. **Do not** carry color not in use across top of previous row. Change colors by drawing new color through last 2 loops on hook and proceed with new color.

1st row of Chart: (RS). 1 sc in 2nd ch from hook. 1 sc in each ch to end of chain. Turn. 35 sc.

2nd row: Ch 1. 1 sc in each sc to end of row. Turn.

Rep 2nd row and cont working Chart until 35th row of chart is complete. Fasten off.

BACK (make 2 alike)

With A, ch 37.

1st row: (RS). 1 hdc in 3rd ch from hook. 1 hdc in each ch to end of chain. Turn. 35 hdc.

2nd row: Ch 1. 1 sc in first st. *1 hdcbp around next hdc. 1 hdcfp around next hdc. Rep from * to last 2 sts. 1 hdcbp around next hdc. 1 sc in last st. Turn.

3rd row: Ch 1. 1 sc in first st. *1 hdcfp around next hdc. 1 hdcbp around next hdc. Rep from * to last 2 sts. 1 hdcfp around next hdc. 1 sc in last st. Turn.

Rep 2nd and 3rd rows for 2" [5 cm], ending on a 2nd row.



Next row: (RS). Ch 1. 1 sc in each st to end of row. Turn.

Rep last row, working in Stripe Pat as follows:

With A, work 1 row.

With E, work 3 rows.

With B, work 3 rows.

With F, work 3 rows.

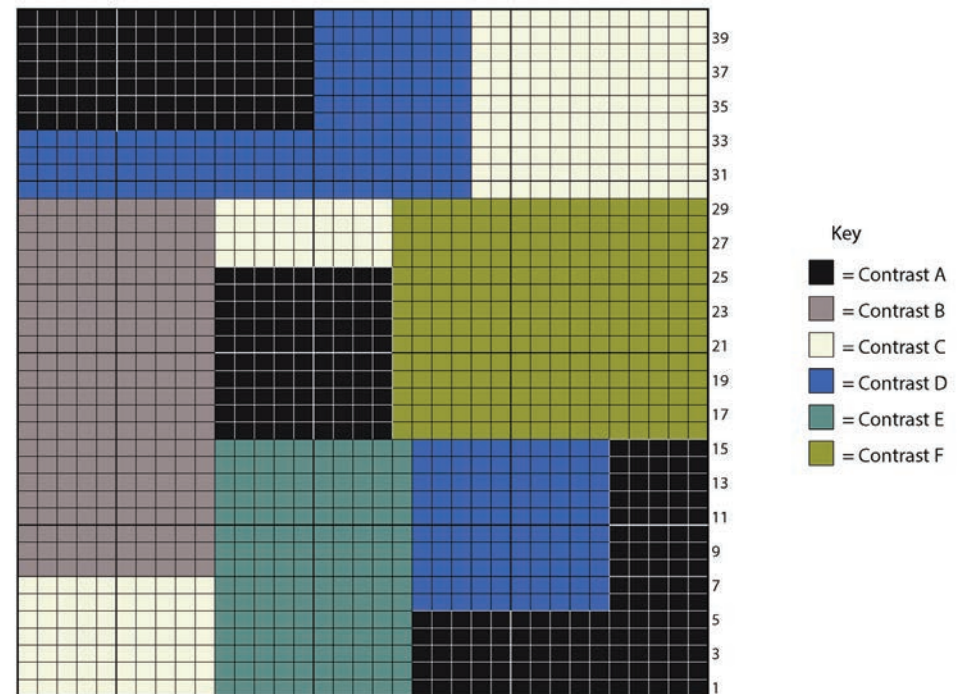
With C, work 3 rows.

With D, work 4 rows.

Fasten off.

Assembly

With RS tog, overlap Back pieces to match Front with Ribbed sections in center to create opening to insert pillow form. Sew outer edge seams. Insert pillow form.



Start here