

## BERNAT® CROSSED SQUARES CROCHET PILLOW



CROCHET | SKILL LEVEL: **EASY**

### ABBREVIATIONS

**Approx** = Approximately

**Beg** = Begin(ning)

**Ch** = Chain(s)

**Cont** = Continue(ity)

**Hdc** = Half double crochet

**Hdcbp** = Yoh and draw up a loop around post of next st at back of work inserting hook from right to left. Yoh and draw through 3 loops on hook

**Hdcfp** = Yoh and draw up a loop around post of next st at front of work inserting hook from right to left. Yoh and draw through 3 loops on hook

**Rep** = Repeat

**RS** = Right side

**Sc** = Single crochet

**St(s)** = Stitch(es)

**Tog** = Together

**WS** = Wrong side

**Yoh** = Yarn over hook

### MEASUREMENT

Approx 24" [61 cm] square.

### GAUGE

8 sc and 9 rows = 4" [10 cm].

2 loops on hook of last st. Draw new color through last 2 loops and proceed with new color.

- Contrast D sections are worked in cross stitch embroidery after Pillow Front is complete.

### INSTRUCTIONS

#### Notes:

- Ch 2 at beg of row **does not** count as hdc.
- Use separate balls of yarn for each color section in design. **Do not** carry unused colors across row.
- To change colors, work to last

#### FRONT

See Chart I on page 3.  
With A, ch 49.

**1st row:** (RS). 1 sc in 2nd ch from hook. 1 sc in each ch to end of chain. Turn. 48 sc. 1st row of Chart I is complete.

### MATERIALS

**Bernat® Softee® Chunky™** (3.5 oz/100 g; 108 yds/99 m)

**Contrast A** Teal (28203) **6 balls**

**Contrast B** Seagreen (28219) **2 balls**

**Contrast C** Natural (28008) **1 ball**

**Contrast D** Glowing Gold (28607) **1 ball**

Size U.S. L/11 (8 mm) crochet hook **or size needed to obtain gauge.**  
24" [61 cm] square pillow form.

## BERNAT® CROSSED SQUARES CROCHET PILLOW

Cont working Chart I as follows, noting each square is equal to 1 sc  
**2nd row:** Ch 1. 1 sc in each sc to end of row. Turn.

Rep 2nd row and cont working Chart I until 54 rows of chart are complete, reading RS rows from right to left and WS rows from left to right. Fasten off.

With D, following Chart II on page 3, work cross stitch embroidery as indicated, noting **one** X is worked over **one** sc.

### BACK (make 2 alike)

With A, ch 49.

**1st row:** 1 sc in 2nd ch from hook. 1 sc in each ch to end of chain. Turn. 48 sc.

**2nd row:** Ch 1. 1 sc in each sc to end of row. Turn.

Rep 2nd row until work from beg measures 10½" [26.5 cm].

**Next row:** Ch 2. 1 hdc in each sc to end of row. Turn.

**Next row:** Ch 1. \*1 hdcfp around next hdc. 1 hdcbp around next hdc. Rep from \* to end of row. Turn. Rep last row until work from beg measures 14" [35.5 cm].

Fasten off.

### Assembly

With RS tog, overlap Back pieces to match Front with ribbed sections in center to create opening to insert pillow form. Sew outer edge seams. Insert pillow form.

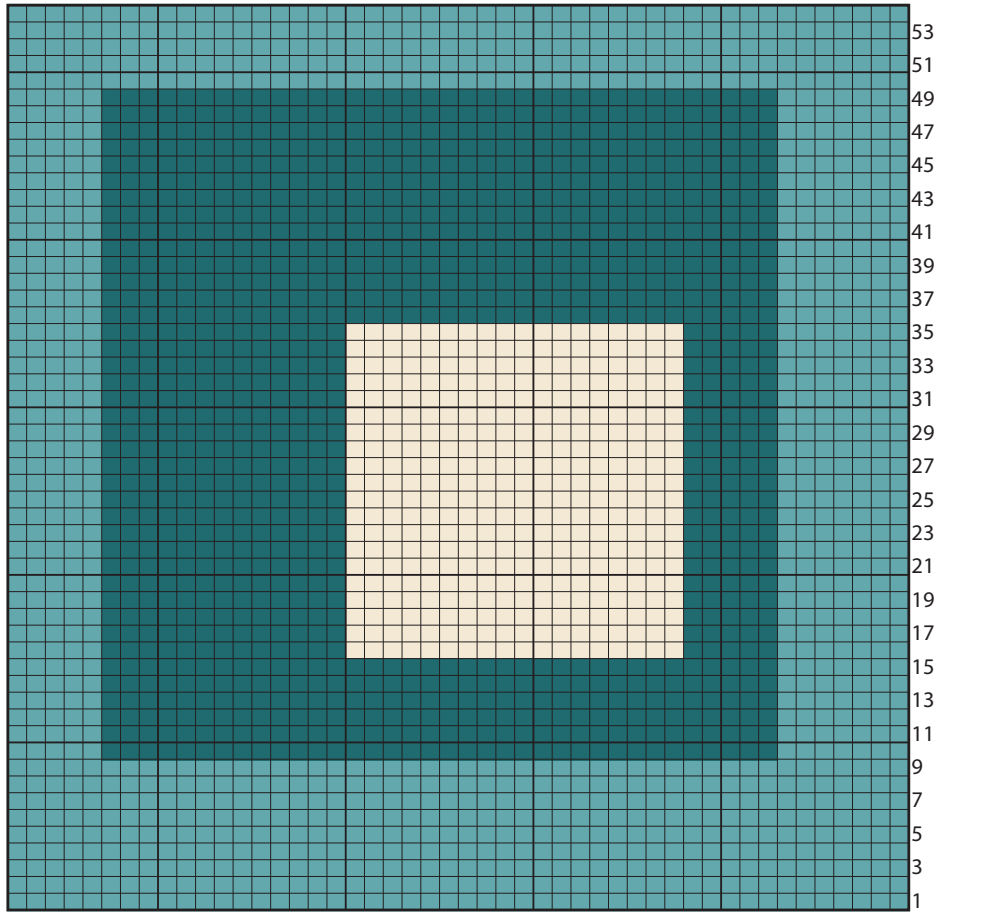
Front



Back

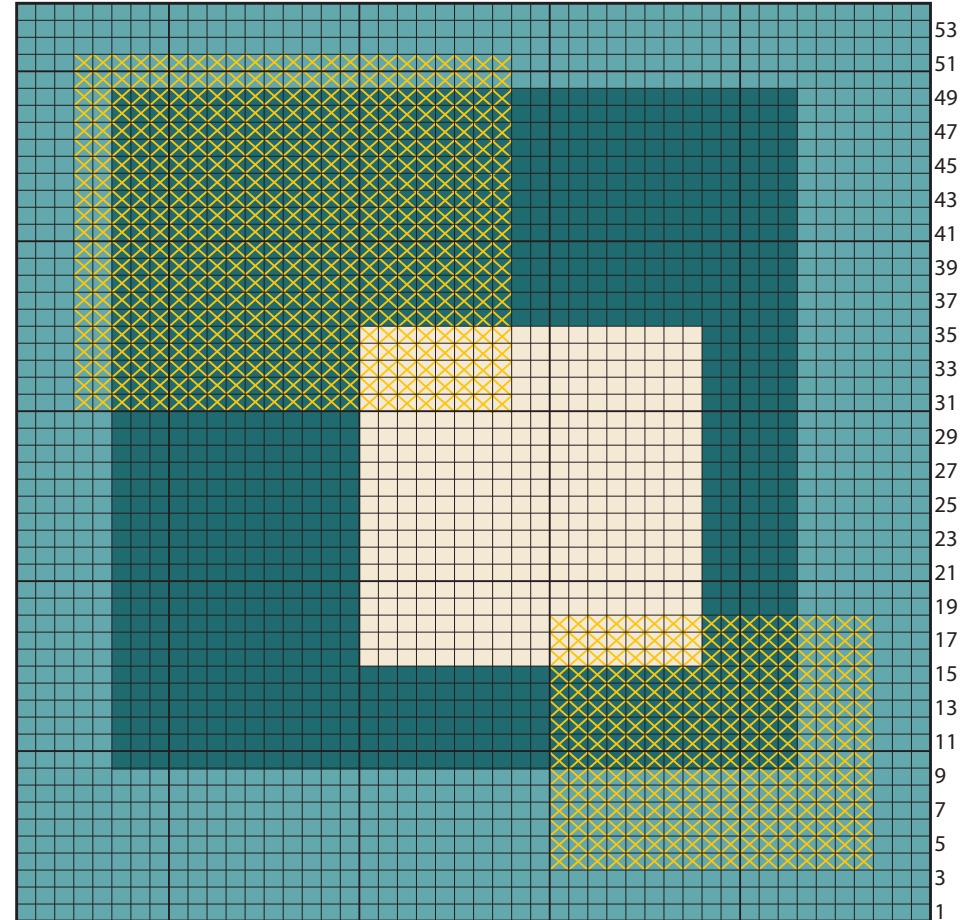


**Chart I**



- Key**
- Contrast A
  - Contrast B
  - Contrast C

**Chart II**



Cross Stitch with Contrast D

