

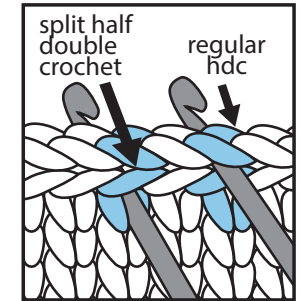


CROCHET | SKILL LEVEL: **EASY**

ABBREVIATIONS

Approx = Approximately
Beg = Begin(ning)
Ch = Chain(s)
Cont = Continue(ity)
Hdc = Half double crochet
Pat = Pattern
Rem = Remain(ing)
Rep = Repeat
Rnd(s) = Round(s)
RS = Right side
Sc = Single crochet

Sl st = Slip stitch
Splhdc = Split half double crochet: work hdc between 'legs' at front and back of stitch (splitting stitch) instead of through top loops.
St(s) = Stitch(es)
Tog = Together
WS = Wrong side
Yoh = Yarn over hook



MEASUREMENT

Approx 14" [35.5 cm] cubed.

GAUGES

9.5 splhdc and 10 rows = 4" [10 cm] in pat.
 10 sc and 11 rows = 4" [10 cm].

MATERIALS

Bernat® Maker™ (8.8 oz/250 g; 317 yds/290 m)

Contrast A Cream (06003) **3 balls**

Contrast B Black (06004) **2 balls**

Size U.S. L/11 (8 mm) Susan Bates® Silvalume® crochet hook **or size needed to obtain gauge.** 14" [35.5 cm] cubed purchased footstool. Susan Bates® yarn needle.

INSTRUCTIONS

FOOTSTOOL COVER

Notes:

- To join new color, work to last loops on hook of previous color. Yoh with new color, draw through rem loops and proceed with new color.
- Carry color when not in use loosely across WS top of row and work sts around it being sure to maintain gauge. Holding yarn to WS will keep colorwork on RS clean and help define the checkerboard effect.

SIDES

Note: Make 5 pieces alike, noting bottom of Footstool Cover is left open.

With B, ch 35.

1st row: (WS). 1 hdc in 2nd ch from hook. 1 hdc in each of next 4 ch. With A, 1 hdc in each of next 4 ch. *With B, 1 hdc in each of next 4 ch. With A, 1 hdc in each of next 4 ch. Rep from * to last ch. 1 hdc in last ch. Turn. 34 sts.

Beg working Chart as follows:

Note: Each row begins with a ch 1, each square represents 1 splhdc, and 8-st rep will be worked 4 times. Also note that 8-row rep will be worked 4 times:

1st and 3rd rows: With A, ch 1. 1 splhdc in first st. *With A, 1 splhdc in each of next 4 sts. With B, 1 splhdc in each of next 4 sts. Rep from * to last st. 1 splhdc in last st. Turn.

2nd and 4th rows: With B, ch 1. 1 splhdc in first st. *With B, 1 splhdc in each of next 4 sts. With A, 1 splhdc in each of next 4 sts. Rep from * to last st. 1 splhdc in last st. Turn.

5th and 7th rows: With B, ch 1. 1 splhdc in first st. *With B, 1 splhdc in each of next 4 sts. With A, 1 splhdc in each of next 4 sts. Rep from * to last st. 1 splhdc in last st. Turn.

6th and 8th rows: With A, ch 1. 1 splhdc in first st. *With A, 1 splhdc in each of next 4 sts. With B, 1 splhdc in each of next 4 sts. Rep from * to last st. 1 splhdc in last st. Turn.

Rep 1st to 8th rows 3 times more. Chart is complete.

Next row: With B, ch 1. 1 splhdc in first st. *With B, 1 splhdc in each of next 4 sts. With A, 1 splhdc in each of next 4 sts. Rep from * to last st. 1 splhdc in last st. Fasten off.

Blocking: Pin pieces to 14" [35.5 cm] square. Cover with a damp cloth, leaving cloth to dry.

Joining: Place WS of Sides facing each other when joining. With RS facing and A, work 1 row of sc to join sides tog to form a cube with 1 open side. Make sure to keep cont of checkerboard pat, noting top will only align in checkerboard pat on 2 sides. Joining rows of sc will create ridges on RS.

Trim: With RS facing, join A with sl st in any st along open edge of Footstool Cover. Ch 1. Work 1 rnd of sc evenly around bottom edge of Footstool Cover. Join with sl st in first sc. Fasten off.

POUCH

Note: Pouch is worked in 1 piece, then folded and seamed in Finishing.

With A, ch 16.

1st row: 1 sc in 2nd ch from hook. 1 sc in each ch to end of ch. Turn. 15 sc.

2nd row: Ch 1. 1 sc in each sc to end of row. Turn.

Rep last row until work from beg measures 24" [61 cm].

Fasten off.

FINISHING:

Fold Pouch so foundation ch and final row meet in center to form opening (see diagram on page 2).

Seaming: Top Edge: Join A with sl st to corner of Pouch to work across top edge. Ch 1. *Working through both thicknesses*, work 1 row of sc evenly across top edge. Fasten off.

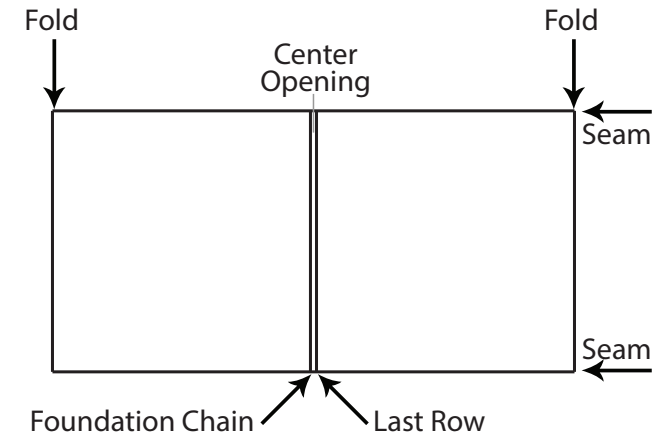
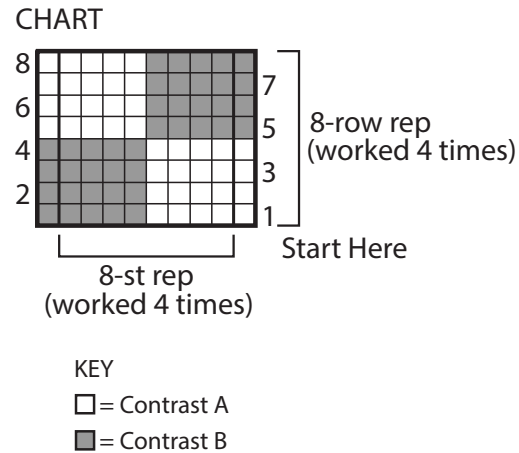
Bottom Edge: Work as for top edge across bottom edge.

Sew top edge of Pouch along bottom edge of Footstool Cover so that Pouch will fold and be hidden inside cover (see diagram on page 3 and photo).

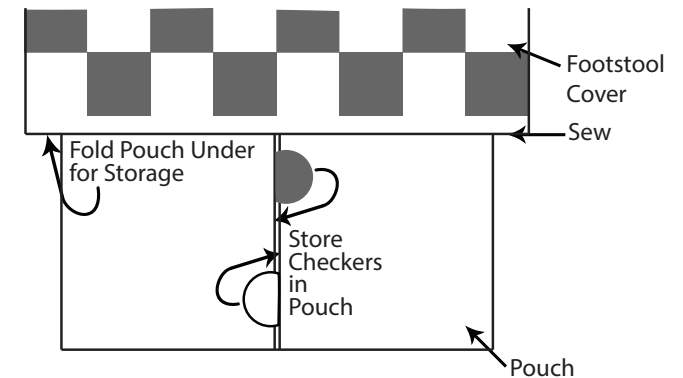
CHECKERS (make 12 each in A and B)
Ch 2.

1st rnd: 8 hdc in 2nd ch from hook.
Sl st in first hdc. Fasten off.

Position Footstool Cover over footstool. Store Checkers in Pouch when not in use.



POUCH FOLDING DIAGRAM



SEW POUCH TO FOOTSTOOL COVER