



MATERIALS

Bernat® Super Value™ (7 oz/197 g; 426 yds/389 m)

Contrast A Bright Teal (53202) **1** **ball**

Contrast B Grass (53223) **1** **ball**

Contrast C Berry (00607) **1** **ball**

Contrast D Navy (07711) **1** **ball**

Size U.S. H/8 (5 mm) crochet hook **or size needed to obtain gauge.**
18" [46 cm] square pillow form.

ABBREVIATIONS:

Approx = Approximate(ly) **Sc** = Single crochet
Ch = Chain(s) **Sl st** = Slip stitch
Rep = Repeat **Tog** = Together
RS = Right side **WS** = Wrong side

 CROCHET | SKILL LEVEL: **INTERMEDIATE**

MEASUREMENT

Approx 18" [45.5 cm] square.

GAUGE

13 sc and 14 rows = 4" [10 cm].

INSTRUCTIONS

Note: Use separate balls of yarn for each area of color in the design. When joining colors, work to last 2 loops on hook of first color. Draw new color through last 2 loops and proceed.

FRONT

With B, ch 58.

1st row: (RS). 1 sc in 2nd ch from hook. 1 sc in each ch to end of chain. Turn. 57 sc.

2nd row: Ch 1. 1 sc in each sc to end of row. Turn.

Note: Chart is shown on page 2.

Work Chart in sc until 56th row of Chart is complete, reading **RS** rows from **right** to left and **WS** rows from **left** to right and joining A at end of last row.

Next 2 rows: With A, ch 1. 1 sc in each sc to end of row. Turn. Fasten off at end of last row.

BACK

With D, ch 58.

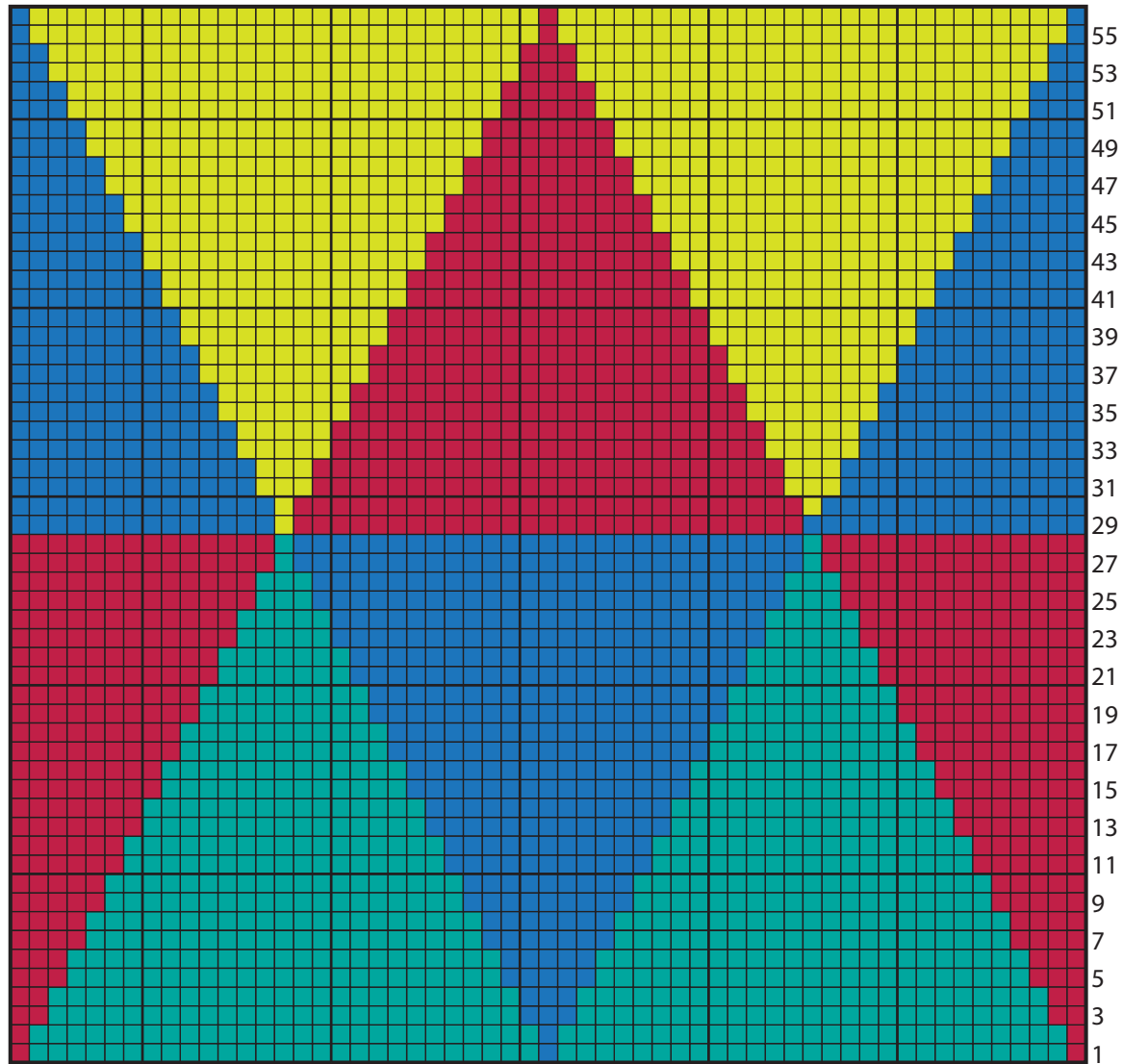
1st row: (RS). 1 sc in 2nd ch from hook. 1 sc in each ch to end of chain. Turn. 57 sc.

2nd row: Ch 1. 1 sc in each sc to end of row. Turn.

Rep last row until Back measures same as Front. Fasten off.

FINISHING

Holding WS of Front and Back tog and working through both thicknesses, join D with sl st in corner. Ch 1. Work sc evenly around, having 3 sc in each corner and inserting pillow form before joining 4th side. Join with sl st to first sc. Fasten off.



Start here