



CROCHET | SKILL LEVEL: **INTERMEDIATE**

## ABBREVIATIONS

**Approx** = Approximate(ly)  
**Beg** = Begin(ning)  
**Ch(s)** = Chain(s)  
**Cont** = Continue(ity)  
**Hdc** = Half double crochet  
**Pat** = Pattern  
**Rem** = Remain(ing)  
**Rep** = Repeat

**RS** = Right side  
**Splhdc** = Split half double  
 crochet: work hdc between 'legs'  
 of stitch (splitting stitch) instead  
 of through top loops  
**St(s)** = Stitch(es)  
**Tog** = Together  
**WS** = Wrong side

## MEASUREMENT

Approx 20" [51 cm] square.

## GAUGE

7½ sts and 10½ rows = 4" [10 cm]  
 in pat.

## INSTRUCTIONS

**Note:** To change color, work to last 2 loops on hook. Draw loop of next color through 2 loops on hook to complete st and proceed in next color. Carry color when not in use loosely across top of row and work sts around it.

## Back and Front (make alike)

With A, ch 37.

**1st row:** (RS). 1 hdc in 3rd ch from hook (counts as 2 hdc). 1 hdc in each ch to end of chain. Turn. 36 hdc.

**2nd row:** Ch 2 (counts as hdc). 1 splhdc in each st to end of row. Turn.

1st and 2nd rows of Chart are complete. Work in Chart to end of chart, noting each square represents 1 splhdc, reading RS rows from **right** to left and WS rows from **left** to right.

Cont in chart until 50 rows have been worked. Fasten off.

## MATERIALS

**Bernat® Maker Home Dec™** (8.8 oz/250 g; 317 yds/290 m)

**Contrast A** Cream (11009) **2 balls**

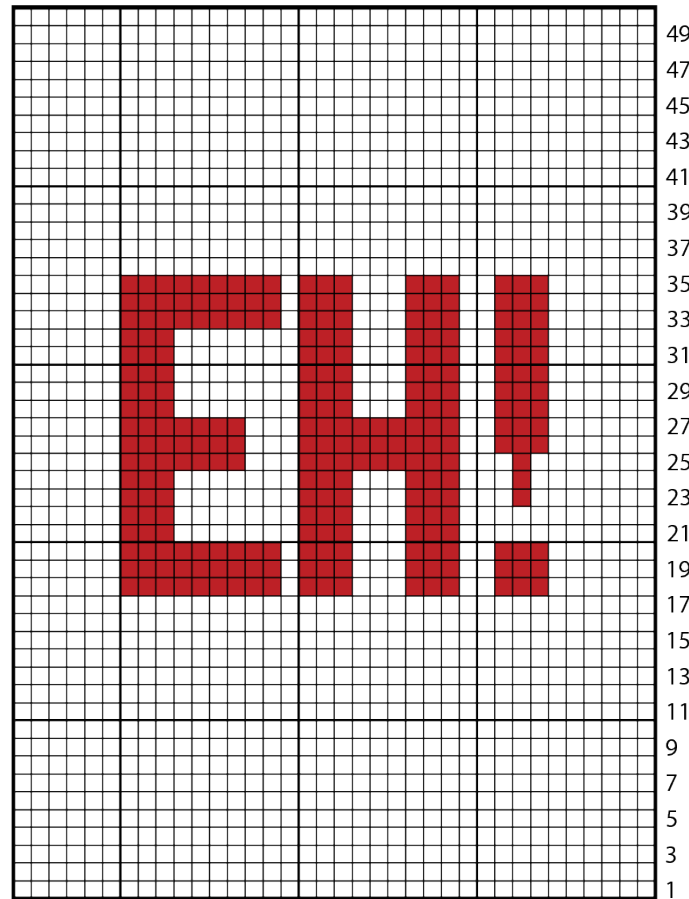
**Contrast B** Woodberry (11001) **1 ball**

Size U.S. N/P (10 mm) crochet hook **or size needed to obtain gauge.**  
 20" [51 cm] square pillow form.

## FINISHING

Pin Front and Back to measurements. Cover with a damp cloth to dry.

With WS facing, sew 3 sides tog. Insert pillow form. Sew rem side



- Contrast A
- Contrast B

