



MATERIALS

Bernat® Roving™ (3.5 oz/100 g; 120 yds/109 m)

Contrast A Flint (00033)	3 balls
Contrast B Putty (00032)	1 ball
Contrast C Quartz Pink (00717)	2 balls
Contrast D Rice Paper (00100)	3 balls
Contrast E Low Tide (00098)	1 ball

Size U.S. K/10½ (6.5 mm) crochet hook **or size needed to obtain gauge.** 2 wooden dowels, ½" [1 cm] diameter x 36" [91.5 cm] long. 4 wooden dowel caps with ½" [1 cm] diameter opening. Optional: Gold spray paint.



CROCHET | SKILL LEVEL: **EASY**

ABBREVIATIONS

Approx = Approximately
Beg = Beginning
Ch = Chain(s)
Cont = Continue
Rem = Remain(ing)
Rep = Repeat
Rnd = Round
RS = Right side

Sc = Single crochet
Scbl = Single crochet in back loop only
Sl st = Slip stitch
St(s) = Stitch(es)
WS = Wrong side
Yoh = Yarn over hook

MEASUREMENTS

Approx 32 x 50" [81 x 127 cm].

GAUGE

9 sc and 11 rows = 4" [10 cm].

INSTRUCTIONS

Notes:

- Tapestry is worked in intarsia technique. Use separate balls of yarn for each color section in design. **Do not** carry color not in use across top or back of stitches.
- To join new color, work to last loops on hook of previous color. Yoh with new color, draw through rem loops and proceed with new color

Bottom Dowel Casing:

With A, ch 73.

1st row: 1 sc in 2nd ch from hook. 1 sc in each ch to end of chain. Turn. 72 sc.

2nd row: Ch 1. 1 sc in each sc to end of row. Turn.

Rep last row until work from beg measures 2" [5 cm], ending on a WS row.

Proceed as follows:

1st row (fold line): (RS). With A, ch 1. 1 scbl in first sc. 1 scbl in each of next 34 sc. With B, 1 scbl in next sc. With A, 1 scbl in each sc to end of row. Turn.

2nd row: With A, ch 1. 1 sc in each of first 34 sc. With C, 1 sc in next sc. With A, 1 sc in next sc. With B, 1 sc in next sc. With C, 1 sc in next sc. With A, 1 sc in each sc to end of row. Turn.

First 2 rows of Chart are complete. Cont as established, working Chart in sc to end of Chart. See pages 3 and 4 for Chart.

Do not fasten off. Break B, C, D and E.

Top Dowel Casing:

1st row (fold line): (RS). With A, ch 1. 1 scbl in each sc to end of row. Turn.

2nd row: (RS). Ch 1. 1 sc in each sc to end of row. Turn.

Rep last row until Top Dowel Casing measures 2" [5 cm], ending on a WS row.

Fasten off.

Finishing

Fold Top and Bottom Dowel Casings to WS of Tapestry at fold lines. Sew in position at WS of work to form casing, ensuring sts do not show at RS of work.

Border:

With RS facing, join A with sl st to first rem front loop of fold line at top right corner of Tapestry.

1st rnd: Ch 1. *Working in rem front loops*, 3 sc in first sc. 1 sc in each sc to last sc. 3 sc in last sc. Work sc evenly down left side of Tapestry to next corner. *Working in rem front loops of fold line*, 3 sc in first sc. 1 sc in each sc to last sc. 3 sc in last sc. Work sc evenly up right side of Tapestry to first sc. Join with sl st to first sc. Fasten off.

Optional: Spray paint dowels.

Insert dowels into Top and Bottom Dowel Casings. Glue Dowel Caps to each end of Dowels.

Outlines: Using chain st embroidery and A, outline each color section as seen in picture.

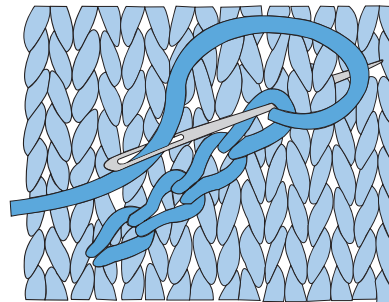
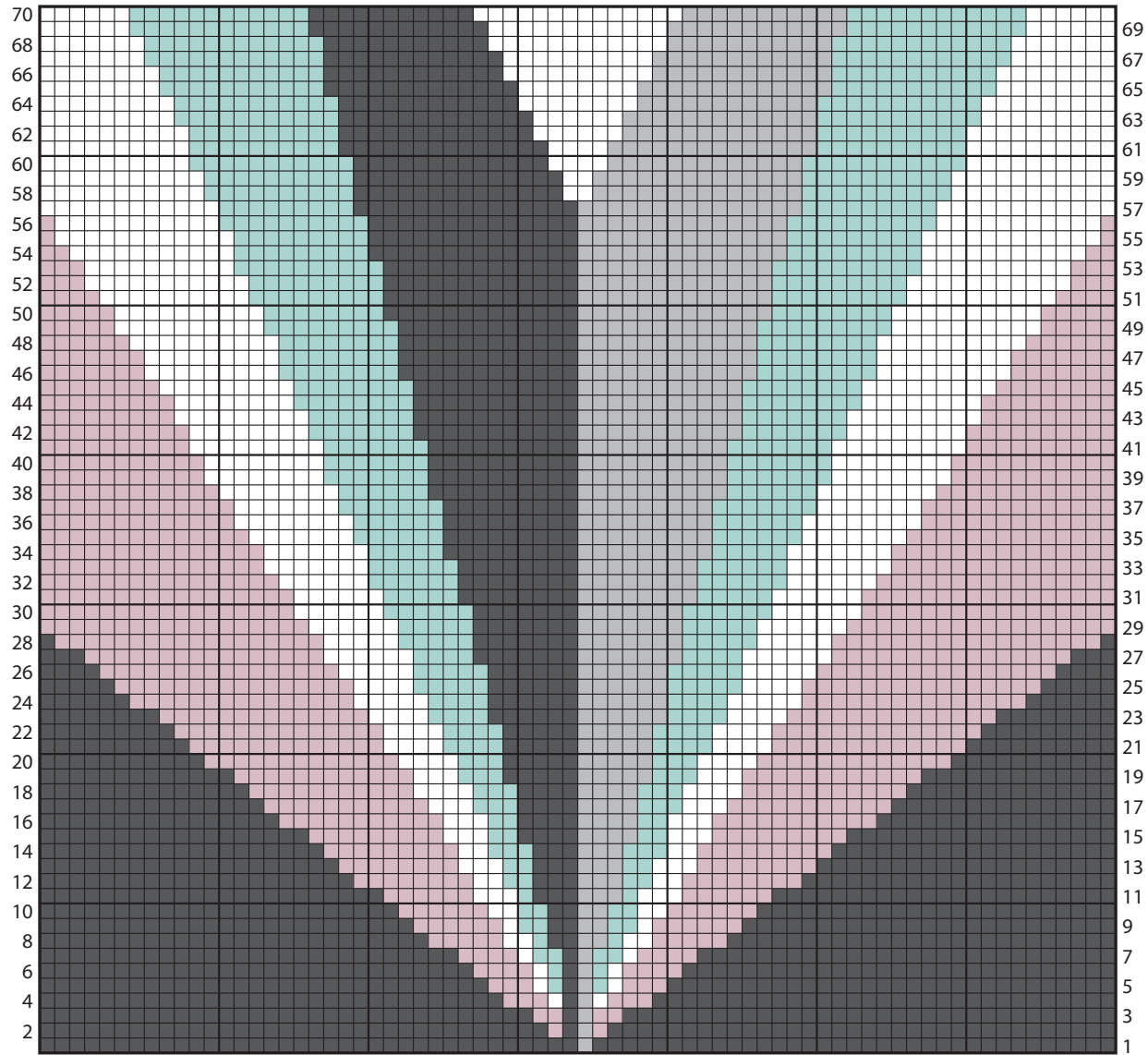
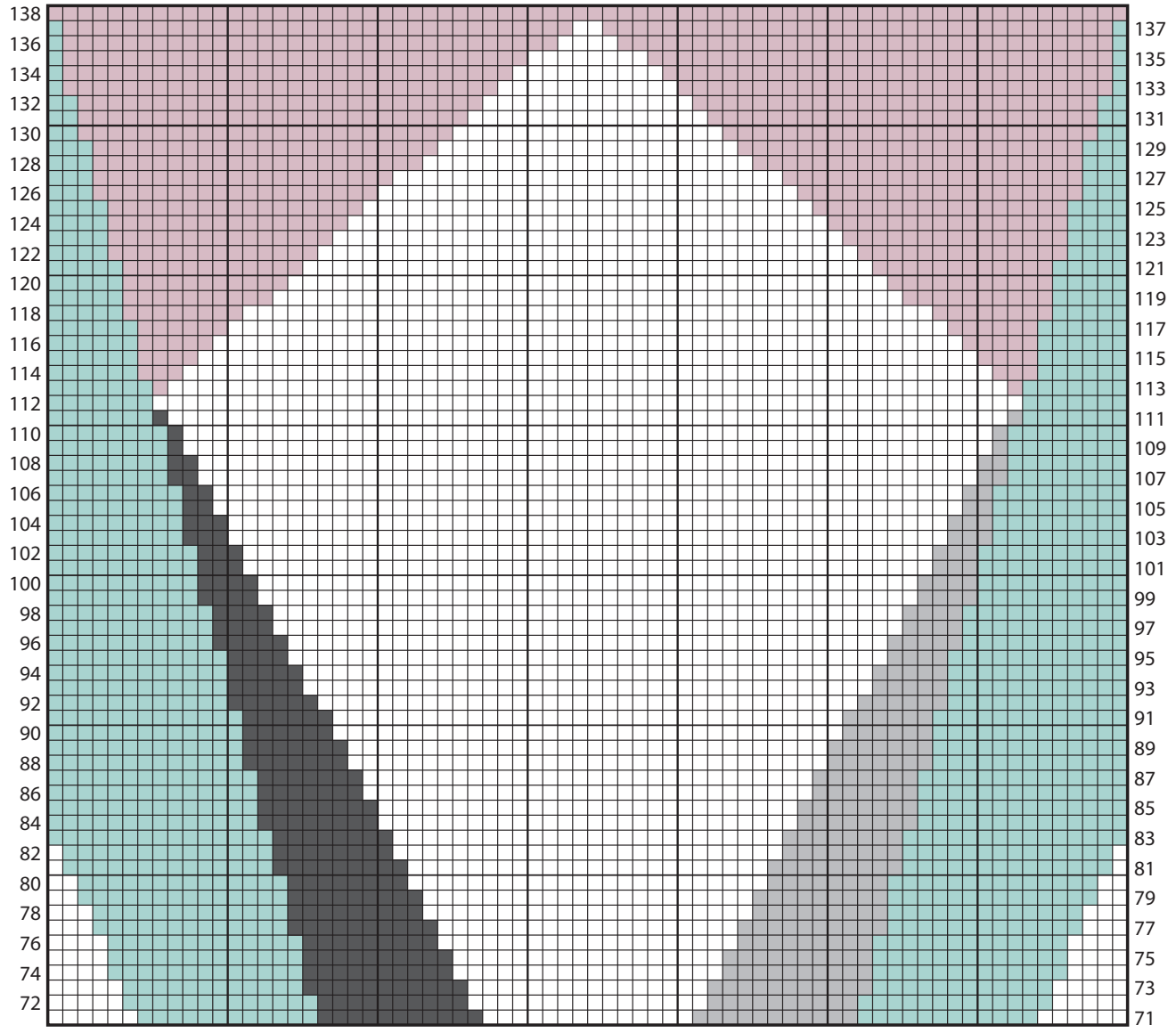


Chart continues on next page



Key
 ■ = Contrast A ■ = Contrast B ■ = Contrast C □ = Contrast D ■ = Contrast E

Start here



Key
■ = Contrast A ■ = Contrast B ■ = Contrast C □ = Contrast D ■ = Contrast E