



CROCHET | SKILL LEVEL: **INTERMEDIATE**

ABBREVIATIONS

Approx =
Approximately
Ch = Chain(s)
RS = Right side
Sc = Single crochet

Sc2(3)tog = Draw up
a loop in each of next
2 (3) stitches. Yoh
and draw through all
loops on hook.

Sl st = Slip stitch
Tog = Together
Yoh = Yarn over hook

MEASUREMENTS

Approx 56" x 48" [142 x 122 cm]
excluding tassels.

GAUGES

16 sc and 18 rows = 4" [10 cm].
Motif = Approx 6" x 9½" [15 x 24 cm].

INSTRUCTIONS

MOTIF

Motif 1: Make 13 - A as Color 1, C as Color 2, F as Color 3, B as Color 4, E as Color 5, and D as Color 6.

Motif 2: Make 14 - C as Color 1, F as Color 2, E as Color 3, D as Color 4, A as Color 5, and B as Color 6.

Motif 3: Make 15 - E as Color 1, D as Color 2, A as Color 3, C as Color 4, B as Color 5, and F as Color 6.

Motif 4: Make 15 - D as Color 1, B as Color 2, C as Color 3, A as Color 4, F as Color 5, and E as Color 6.

Motif 5: Make 13 - F as Color 1, A as Color 2, B as Color 3, E as Color 4, D as Color 5, and C as Color 6.

Motif 6: Make 13 - B as Color 1, E as Color 2, D as Color 3, F as Color 4, C as Color 5, and A as Color 6.

With Color 1, ch 42.

See diagram on page 3.

1st row: (RS). 2 sc in 2nd ch from hook. 1 sc in each of next 16 ch. Sc3tog. Skip next ch. Sc3tog. 1 sc in each of next 16 ch. 2 sc in last ch. Turn.

2nd row: Ch 1. 1 sc in each of first 17 sc. (Sc2tog) twice. 1 sc in each sc to end of row. Turn.

MATERIALS

Bernat® Lattice™ (7.8 oz/220 g; 389 yds/356 m)

Contrast A Cherry (19006) **2 balls or 633 yds/579 m**

Contrast B Rust Mix (19007) **2 balls or 575 yds/526 m**

Contrast C Teal Mix (19010) **2 balls or 575 yds/526 m**

Contrast D Heather Mix (19012) **2 balls or 575 yds/526 m**

Contrast E Loden Mix (19009) **2 balls or 575 yds/526 m**

Contrast F Golden Hour (19008) **3 balls or 905 yds/827.5 m**

Size U.S. H/8 (5 mm) Susan Bates® crochet hook **or size needed to obtain gauge.** Susan Bates® yarn needle. 8" [20.5 cm] piece of cardboard for tassels.

3rd row: Ch 1. 2 sc in first sc. 1 sc in each of next 14 sc. (Sc3tog) twice. 1 sc in each of next 14 sc. 2 sc in last sc. Break Color 1. Join Color 2. Turn.

4th row: With Color 2, ch 1. 1 sc in each of first 15 sc. (Sc2tog) twice. 1 sc in each sc to end of row. Turn.

5th row: Ch 1. 2 sc in first sc. 1 sc in each of next 12 sc. (Sc3tog) twice. 1 sc in each of next 12 sc. 2 sc in last sc. Turn.

6th row: Ch 1. 1 sc in each of first 13 sc. (Sc2tog) twice. 1 sc in each sc to end of row. Break Color 2. Join Color 3. Turn.

7th row: With Color 3, ch 1. 2 sc in first sc. 1 sc in each of next 10 sc. (Sc3tog) twice. 1 sc in each of next 10 sc. 2 sc in last sc. Turn.

8th row: Ch 1. 1 sc in each of first 11 sc. (Sc2tog) twice. 1 sc in each sc to end of row. Turn.

9th row: Ch 1. 2 sc in first sc. 1 sc in each of next 8 sc. (Sc3tog) twice. 1 sc in each of next 8 sc. 2 sc in last sc. Break Color 3. Join Color 4. Turn.

10th row: With Color 4, ch 1. 1 sc in each of first 9 sc. (Sc2tog) twice. 1 sc in each sc to end of row. Turn.

11th row: Ch 1. 2 sc in first sc. 1 sc in each of next 6 sc. (Sc3tog) twice. 1 sc in each of next 6 sc. 2 sc in last sc. Turn.

12th row: Ch 1. 1 sc in each of first 7 sc. (Sc2tog) twice. 1 sc in each sc to end of row. Break Color 4. Join Color 5. Turn.

13th row: With Color 5, ch 1. 2 sc in first sc. 1 sc in each of next 4 sc. (Sc3tog) twice. 1 sc in each of next 4 sc. 2 sc in last sc. Turn.

14th row: Ch 1. 1 sc in each of first 5 sc. (Sc2tog) twice. 1 sc in each sc to end of row. Turn.

15th row: Ch 1. 2 sc in first sc. 1 sc in each of next 2 sc. (Sc3tog) twice. 1 sc in each of next 2 sc. 2 sc in last sc. Break Color 5. Join Color 6. Turn.

16th row: With Color 6, ch 1. 1 sc in each of first 3 sc. (Sc2tog) twice. 1 sc in each sc to end of row. Turn.

17th row: Ch 1. 2 sc in first sc. (Sc3tog) twice. 2 sc in last sc. Turn.

18th row: Ch 1. 1 sc in first sc. (Sc2tog) twice. 1 sc in last sc. Turn.

19th row: Ch 1. (Sc2tog) twice. Turn.

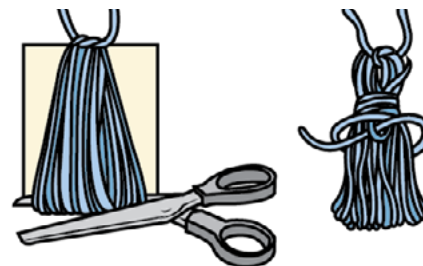
20th row: Ch 1. Sc2tog. Fasten off.

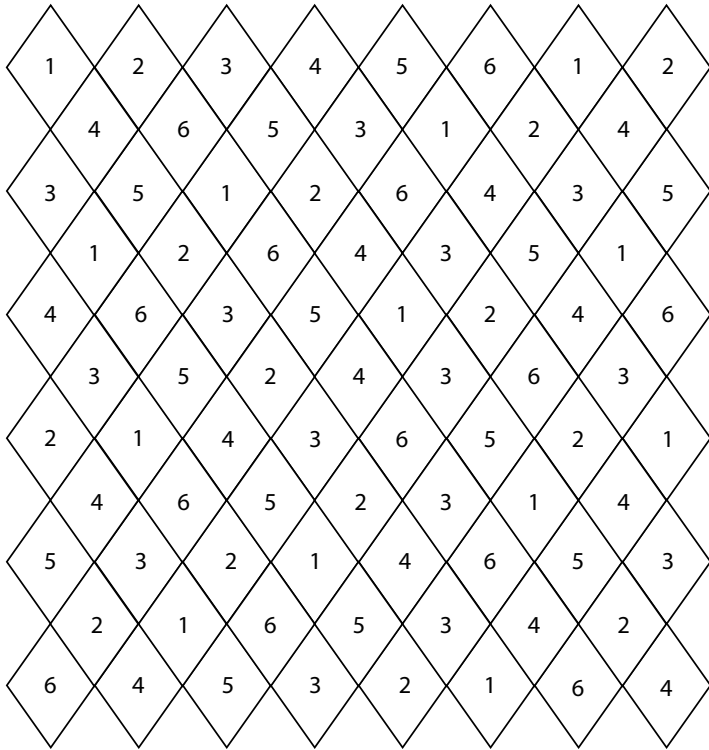
With F, sc Motifs tog as shown in Assembly Diagram on page 3. Note that all points created by foundation ch point up.

Edging rnd: (RS). Join F with sl st anywhere on edge of Blanket. Ch 1. Work sc evenly around Blanket, having 3 sc in any “peaks” and sc2tog in any “valleys”. Join with sl st to first sc. Fasten off.

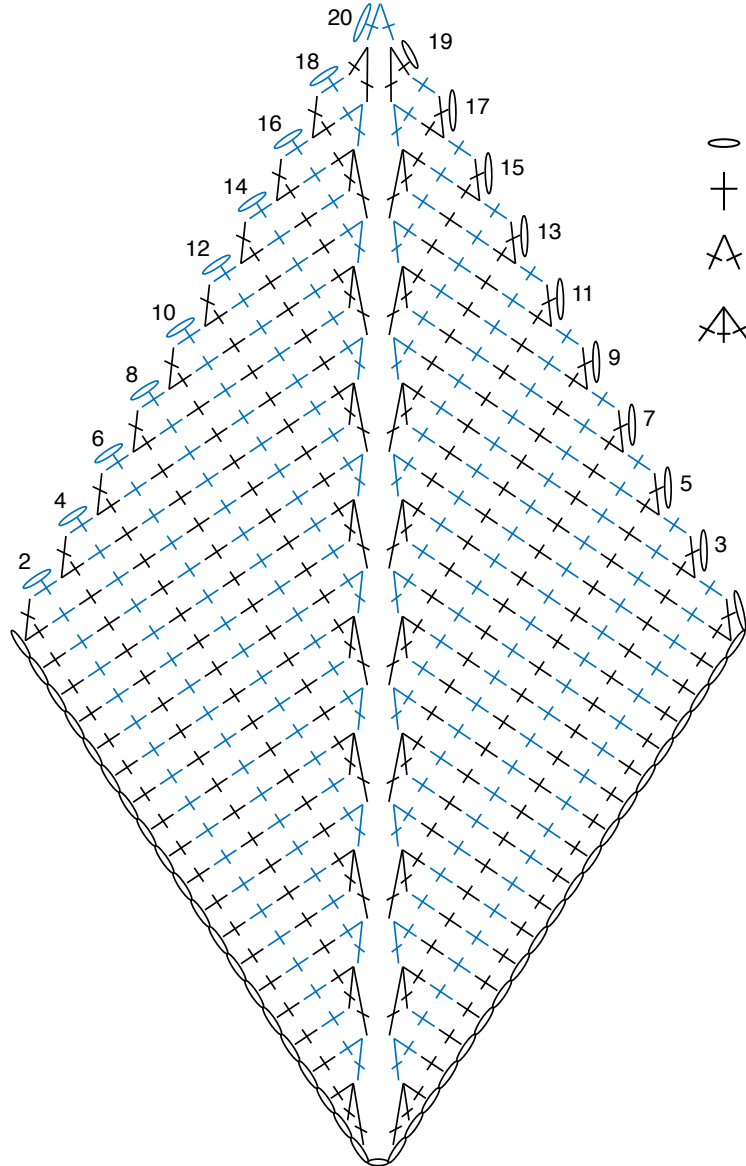
Tassels (make 4 in A, 2 in B, 3 in C, 2 in D, 3 in E, and 2 in F)

Wrap yarn around 8" [20.5 cm] piece of cardboard 80 times. Tie securely at one end. Cut across other end. Wrap yarn 6 times around tassel 2" [5 cm] from tied end, and fasten securely. Attach tassels to coordinating Contrast Color of each Peak of top and bottom edges as shown in photo.





ASSEMBLY DIAGRAM



MOTIF