



CROCHET | SKILL LEVEL: **EASY**

## ABBREVIATIONS

**Approx** =

Approximate(ly)

**Beg** = Begin(ning)

**Ch** = Chain(s)

**Cont** = Continue(ity)

**Dc** = Double crochet

**Dec** = Decrease

**Rem** = Remain(ing)

**Rep** = Repeat

**RS** = Right side

**Sl st** = Slip stitch

**Sp** = Space

**St(s)** = Stitch(es)

**Tog** = Together

**WS** = Wrong side

**Yoh** = Yarn over hook

## MEASUREMENTS

Approx 49" x 51" (124.5 x 129.5 cm).

## GAUGE

4 blocks = 4" [10 cm].

## INSTRUCTIONS

With A, ch 6. *See diagram and chart on page 2.*

**1st row:** (RS). 1 dc in 4th ch from hook (counts as 2 dc). 1 dc in each of last 2 ch. Turn. 1 block made.

**2nd row:** *Ch 6. 1 dc in 4th ch from hook. 1 dc in each of next 2 ch - beg block made. (Sl st. Ch 3. 3 dc) in next ch-3 sp - block made.* Turn. 2 blocks.

**3rd row:** Beg block. \*Block in next ch-3 sp. Rep from \* to end of row. Turn. 3 blocks.

Keeping cont of color changes in Chart (each square on grid represents 1 block), rep last row until 49th row of chart is complete. 49 blocks.

Keeping cont of Chart, proceed as follows to work sides even:

**50th row:** Beg block. \*Block in next ch-3 sp. Rep from \* to last ch-3 sp. Sl st in last ch-3 sp. (**Do not** make a block). Turn.

**51st row:** Sl st in each of first 3 dc. \*Block in next ch-3 sp. Rep from \* to end of row. Turn.

## MATERIALS

**Bernat® Maker™** (8.8 oz/250 g; 317 yds/290 m)

**Contrast A** Hyacinth (06012) **4 balls or 996 yds/911 m**

**Contrast B** Cream (06003) **2 balls or 487 yds/445 m**

**Contrast C** Saffron (06011) **2 balls or 515 yds/471 m**

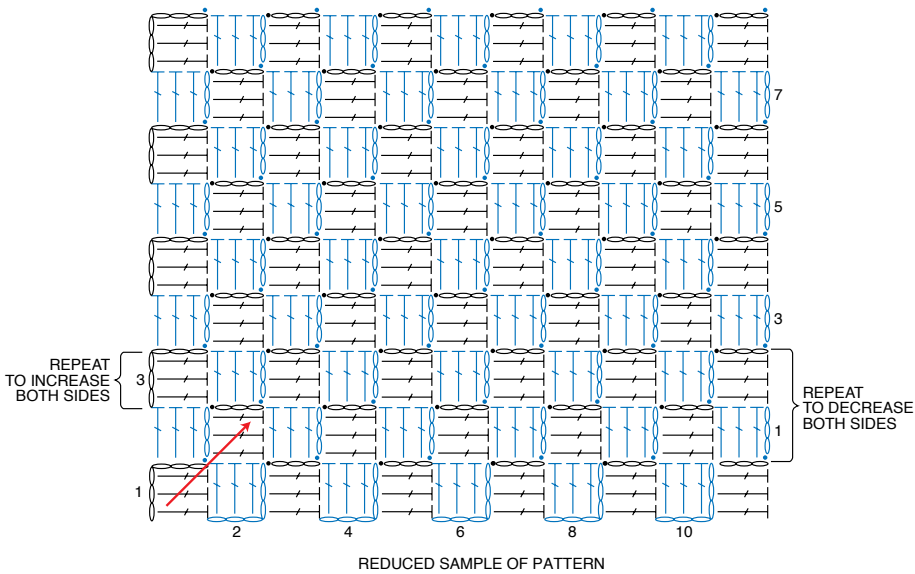
Size U.S. 10½ [6.5 mm] Susan Bates® Silvalume® crochet hook **or size needed to obtain gauge.** Susan Bates® yarn needle.

Keeping cont of Chart, proceed as follows to dec corner:

**52nd row:** Sl st in each of first 3 dc.  
 \*Block in next ch-3 sp. Rep from \*  
 to last ch-3 sp. Sl st in last ch-3 sp.  
 (**Do not** make a block). Turn.

Keeping cont of Chart, rep last row until 1 block rem. Fasten off.

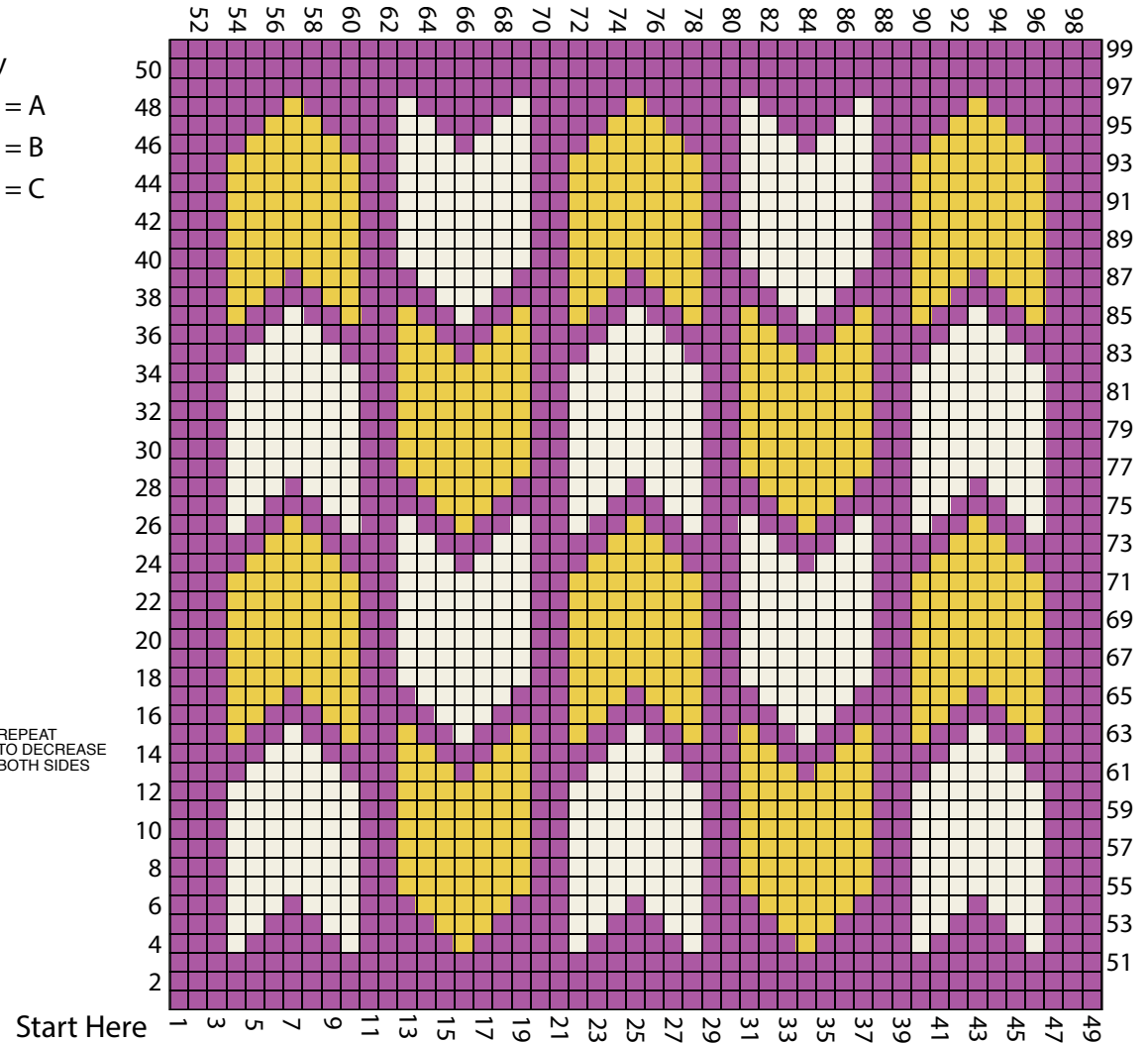
Key  
 = A  
 = B  
 = C



REDUCED SAMPLE OF PATTERN

STITCH KEY

- = chain (ch)
- = slip stitch (sl st)
- = double crochet (dc)



Start Here