



CROCHET | SKILL LEVEL: **EASY**

ABBREVIATIONS

Approx = Approximately

Beg = Begin(ning)(s)

Ch = Chain(s)

Cont = Continue(ity)

Dc = Double crochet

Dec = Decrease

Rem = Remaining

Rep = Repeat

Rnd = Round

RS = Right side

Sl st = Slip stitch

Sp(s) = Space(s)

St(s) = Stitch(es)

Yoh = Yarn over hook

MEASUREMENTS

Approx 50" x 59" [127 x 150 cm].

GAUGE

16 dc and 9 rows = 4" [10 cm].

INSTRUCTIONS

Notes:

- Blanket is worked diagonally from corner to corner.
- When working from Chart, wind small balls of the colors to be used, one for each separate area of color in the design.
- Start new colors at appropriate points. To change color, work to last 2 loops on hook, yoh with new color, pull through 2 loops on hook to complete st and proceed in new color.

With A, ch 6. See *crochet diagram and Blanket Chart on pages 2 and 3*. Each square of chart represents 1 block.

1st row: (RS). 1 dc in 4th ch from hook (counts as 2 dc). 1 dc in each of last 2 ch. Turn. 1 block made.

2nd row: Ch 6. 1 dc in 4th ch from hook. 1 dc in each of next 2 ch – beg block made. (Sl st. Ch 3. 3 dc) in next ch-3 sp – block made. Turn. 2 blocks.

3rd row: Beg block. *Block in next ch-3 sp. Rep from * to end of row. Turn. 3 blocks.

Keeping cont of color changes in Chart (each square on grid represents 1 block), rep last row until 70th row of chart is complete. 70 blocks.

MATERIALS

Bernat® Lattice™ (7.8 oz/220 g; 389 yds/356 m)

Contrast A Cream (19013) **8 balls or 3065 yds/2803 m**

Contrast B Loden Mix (19009) **2 balls or 465 yds/425 m**

Contrast C Ocean Blues (19011) **1 ball or 55 yds/50.5 m**

Contrast D Rust Mix (19007) **1 ball or 35 yds/32 m**

Contrast E Cherry (19006) **1 ball or 100 yds/91.5 m**

Contrast F Heather Mix (19012) **1 ball or 45 yds/41 m**

Size U.S. H/8 (5 mm) Susan Bates® Silvalume® crochet hook **or size needed to obtain gauge.** Susan Bates® yarn needle.

Keeping cont of Chart, proceed as follows to work sides even:

71st row: Sl st in each of first 3 dc.
*Block in next ch-3 sp. Rep from * to end of row. Turn.

72nd row: Beg block. *Block in next ch-3 sp. Rep from * to last ch-3 sp. Sl st in last ch-3 sp. (**Do not** make a block.) Turn.

73rd to 90th rows: Rep last 2 rows 9 times more.

Keeping cont of Chart, proceed as follows to dec corner:

91st row: Sl st in each of first 3 dc.
*Block in next ch-3 sp. Rep from * to last ch-3 sp. Sl st in last ch-3 sp. (**Do not** make a block). Turn.

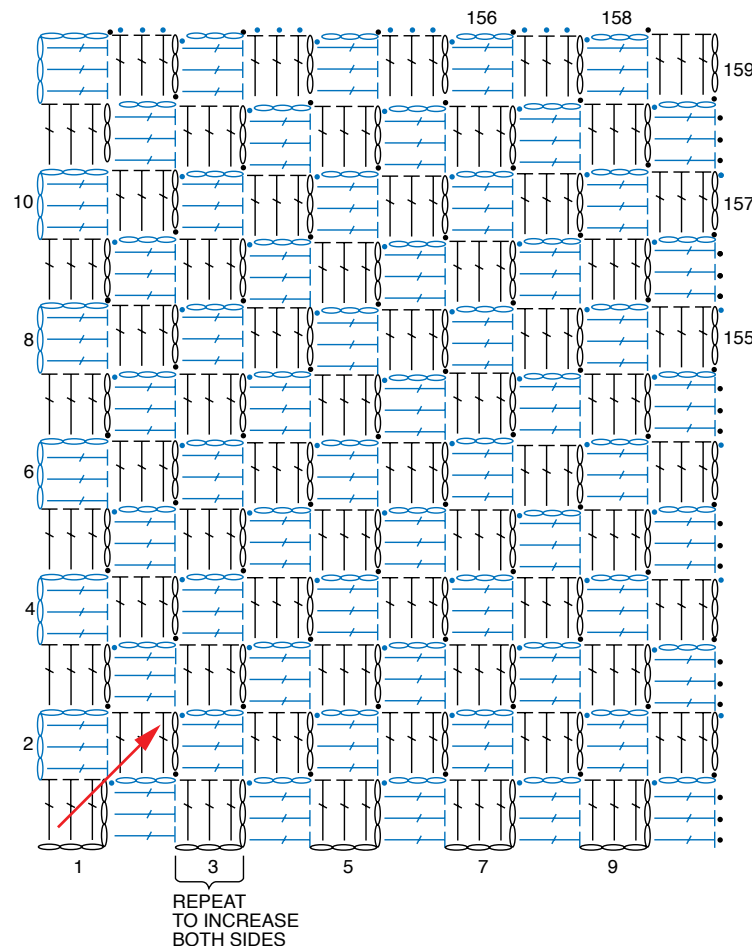
Keeping cont of Chart, rep last row until 1 block rem.
Fasten off.

Edging: With RS facing, join A with sl st to any corner.

1st rnd: Ch 3 (counts as dc). Work dc evenly around, working 5 dc in each corner. Join with sl st to top of ch 3.

2nd rnd: Ch 3. 1 dc in each dc around, working 5 dc in each corner dc. Join with sl st to top of ch 3. Fasten off.

REDUCED SAMPLE OF PATTERN



- = chain (ch)
- = slip stitch (sl st)
- ⌋ = double crochet (dc)

