



CROCHET | SKILL LEVEL: **EASY**

ABBREVIATIONS

Approx =

Approximately

Beg = Beginning

Ch = Chain(s)

Dc = Double crochet

Dc3tog = (Yoh and draw up a loop in next stitch. Yoh and draw through 2 loops on hook) 3 times. Yoh and draw through all loops on hook.

Pat = Pattern

Rep = Repeat

RS = Right side

Sp = Space

St(s) = Stitch(es)

Yoh = Yarn over hook

MEASUREMENTS

Approx 56 x 60" [142 x 152.5 cm].

GAUGE

10 dc and 6 rows = 4" [10 cm].

INSTRUCTIONS

With A, ch 181. *See diagram on page 2.*

1st row: (RS). 1 dc in 5th ch from hook (skipped ch-4 counts as 1 dc and ch 1). 1 dc in each of next 8 ch. *(Yoh and draw up a loop in next ch. Yoh and draw through 2 loops on hook. Skip next ch) twice. Yoh and draw up a loop in next ch. Yoh and draw through 2 loops on hook. Yoh and draw through all 4 loops on hook – cluster over next 5 ch made. 1 dc in each of next

8 dc. (1 dc. Ch 3. 1 dc) in next st. 1 dc in each of next 8 ch. Rep from * to last 14 ch. Cluster over next 5 ch. 1 dc in each of next 8 ch. (1 dc. Ch 1. 1 dc) in last ch. Turn. Break A. Join B. Turn.

2nd row: With B, ch 4 (counts as 1 dc and ch-1). 1 dc in first ch-1 sp. (Ch 1. Skip next dc. 1 dc in next dc) 4 times. *Skip next dc. 1 dc in next st. Skip next dc. (1 dc in next dc. Ch 1. Skip next dc) 4 times. (1 dc. Ch 3. 1 dc) in ch 3 sp. (Ch 1. Skip next dc. 1 dc in next dc) 4 times. Rep from * to last 13 sts. Skip next dc. 1 dc in next dc. Skip next dc. (1 dc in next dc. Ch 1. Skip next dc) 4 times. (1 dc. Ch 1. 1 dc) in turning ch. Turn. Break B. Join A. Turn.

MATERIALS

Bernat® Maker™ (8.8 oz/250 g; 317 yds/290 m)

Contrast A Navy (06017)

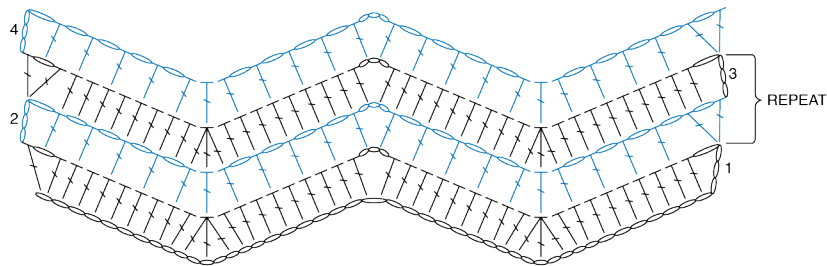
4 balls or 1268 yds/1160 m

Contrast B Soft Peach (06006)

3 balls or 860 yds/786.5 m

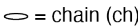
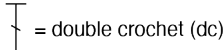
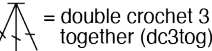
Size U.S. L/11 (8 mm) Susan Bates® crochet hook **or size needed to obtain gauge.**

3rd row: With A, ch 4 (counts as 1 dc and ch-1). 1 dc in each of next 9 sts. *Dc3tog. 1 dc in each of next 8 sts. (1 dc. Ch 3. 1 dc) in next ch-3 sp. 1 dc in each of next 8 sts. Rep from * to last 13 sts. Dc3tog. 1 dc in each of next 8 sts. (1 dc. Ch 1. 1 dc) in 3rd ch of turning ch. Turn. Break A. Join B. Turn. Rep last 2 rows for pat until work from beg measures approx 60" [152.5 cm], ending on a 3rd row. Fasten off.



REDUCED SAMPLE OF PATTERN

STITCH KEY

-  = chain (ch)
-  = double crochet (dc)
-  = double crochet 3 together (dc3tog)

