

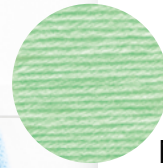
Yarnspirations™
BERNAT®

MAKE THIS

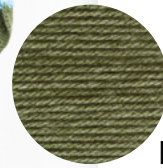
**FUN-GUY GARDEN CROCHET
BLANKET**



Sky



Mint



Forest Green



Primrose



Peony Pink



Masala



CROCHET | SKILL LEVEL: **BEGINNER**



BERNAT®

MAKE THIS

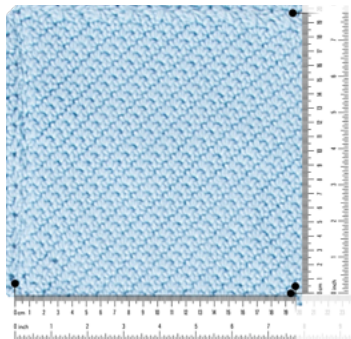
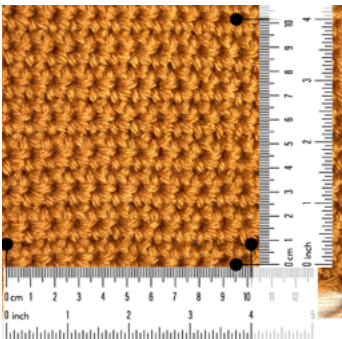
WHAT YOU'LL NEED



GAUGE

13 **single crochet** (sc) and 14 rows = 4" [10 cm].

Bias Square measures approximately 7¾" [19.5 cm] square.



YARN

- **Bernat® Super Value™**
(7 oz/197 g; 440 yds/402 m)

COLORS

Quantity

- **Contrast A** Sky (08879)
3 balls or 1046 yds/956.5 m
- **Contrast B** Mint (08886)
3 balls or 959 yds/877 m
- **Contrast C** Forest Green (53243)
2 balls or 592 yds/541.5 m
- **Contrast D** Primrose (53800)
1 ball or 336 yds/307 m
- **Contrast E** Peony Pink (53417)
1 ball or 255 yds/233 m
- **Contrast F** Masala (53806)
1 ball or 400 yds/366 m

TOOLS

- Size U.S. H/8 (5 mm) Susan Bates® Silvalume® crochet hook **or size needed to obtain gauge.**
- Susan Bates® steel yarn needle.
- Tape measure.

ABBREVIATIONS

Approx = Approximately
Beg = Beginning
Ch = Chain(s)
Cont = Continue(ity)
Dec = Decrease
Inc = Increase
Pat = Pattern

Rem = Remain

Rep = Repeat

RS = Right side

Sc = Single crochet

Sc2tog = Draw up a loop in each of next 2 stitches. Yoh and draw through all loops on hook.

Sl st = Slip stitch

St(s) = Stitch(es)

Tog = Together

WS = Wrong side

Yoh = Yarn over hook

INSTRUCTIONS

USING THIS GUIDE

Click on the underlined words throughout the pattern to access our library of helpful tools.

NOTES

- Bias Square is worked from tip to tip over 38 rows.
- Blanket requires 50 Bias Squares (see guide below) and 18 Half Bias Squares
- 24 Bias Squares will be made using a single shade.
- 24 Bias Squares will be made using 2 shades.
- 2 Bias Squares will be made in unique Stripe Patterns.
- 18 Half Bias Squares will be made in a single shade.
- To change color, work to last 2 loops on hook and draw new color through last 2 loops, then proceed in new color.

MEASUREMENTS

Approximately (Approx) 55" x 66" [139.5 x 167.5 cm].



ABBREVIATIONS

Approx = Approximately
Beg = Beginning
Ch = Chain(s)
Cont = Continue(ity)
Dec = Decrease
Inc = Increase
Pat = Pattern

Rem = Remain
Rep = Repeat
RS = Right side
Sc = Single crochet
Sc2tog = Draw up a loop in each of next 2 stitches. Yoh and draw through all loops on hook.

Sl st = Slip stitch
St(s) = Stitch(es)
RS = Right side
Tog = Together
WS = Wrong side
Yoh = Yarn over hook

INSTRUCTIONS

BLANKET

Bias Square

Make 11 - Colors 1 and 2 are A (Square I)
Make 6 - Colors 1 and 2 are B (Square II)
Make 2 - Colors 1 and 2 are E (Square III)
Make 5 - Colors 1 and 2 are F (Square IV)
Make 3 - Color 1 is A and Color 2 is E (Square V)
Make 3 - Color 1 is A and Color 2 is C (Square VI)
Make 8 - Color 1 is B and Color 2 is C (Square VII)
Make 3 - Color 1 is B and Color 2 is D (Square VIII)
Make 3 - Color 1 is B and Color 2 is F (Square IX)
Make 1 - Color 1 is D and Color 2 is F (Square X)
Make 2 - Color 1 is A and Color 2 is D (Square XI)
Make 1 - Color 1 is D and Color 2 is E (Square XII)

Make 2 special Stripe Pattern (Pat) Squares, working color changes as below:

Make 1 with Stripe Pat XIII as follows:

With A work 10 rows.

With D work 18 rows.

With A work 10 rows.

These 38 rows form Stripe Pat XIII.

Make 1 with Stripe Pat XIV as follows:

With B work 19 rows.

With D work 6 rows.

With B work 7 rows.

With D work 6 rows.

These 38 rows form Stripe Pat XIV.

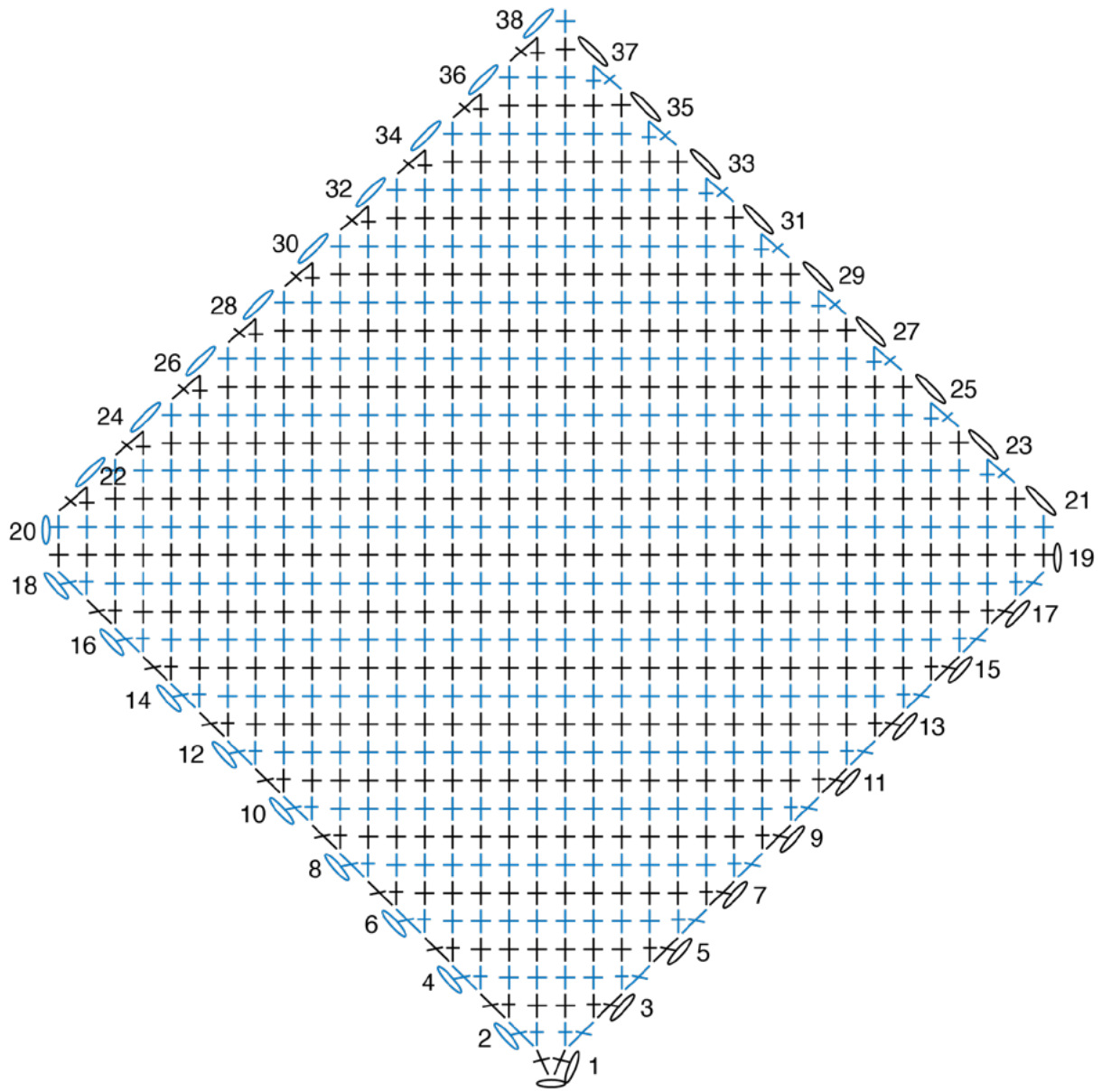
Yarnspirations™
BERNAT®
MAKE THIS

ABBREVIATIONS

Approx = Approximately
Beg = Beginning
Ch = Chain(s)
Cont = Continue(ity)
Dec = Decrease
Inc = Increase
Pat = Pattern

Rem = Remain
Rep = Repeat
RS = Right side
Sc = Single crochet
Sc2tog = Draw up a loop in each of next 2 stitches. Yoh and draw through all loops on hook.

Sl st = Slip stitch
St(s) = Stitch(es)
Tog = Together
WS = Wrong side
Yoh = Yarn over hook



BIAS SQUARE

STITCH KEY

- = chain (ch)
- ⊕ = single crochet (sc)
- ⊗ = single crochet 2 together (sc2tog)

Yarnspirations™
BERNAT®
MAKE THIS

ABBREVIATIONS

Approx = Approximately
Beg = Beginning
Ch = Chain(s)
Cont = Continue(ity)
Dec = Decrease
Inc = Increase
Pat = Pattern

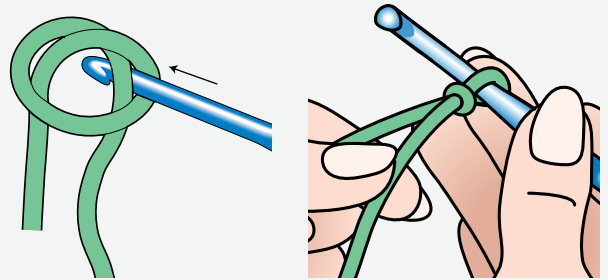
Rem = Remain
Rep = Repeat
RS = Right side
Sc = Single crochet
Sc2tog = Draw up a loop in each of next 2 stitches. Yoh and draw through all loops on hook.

Sl st = Slip stitch
St(s) = Stitch(es)
Tog = Together
WS = Wrong side
Yoh = Yarn over hook

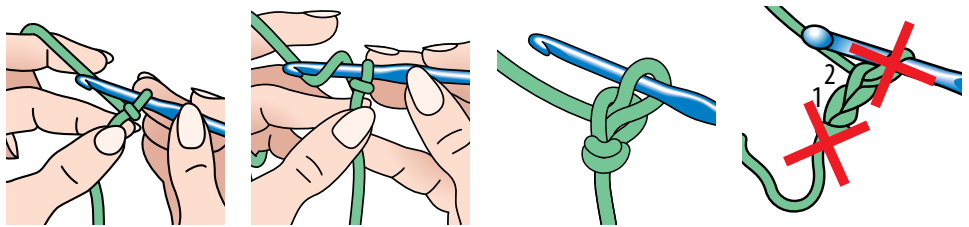
INSTRUCTIONS

BIAS SQUARE

** With Color 1, make a **Slip Knot**:

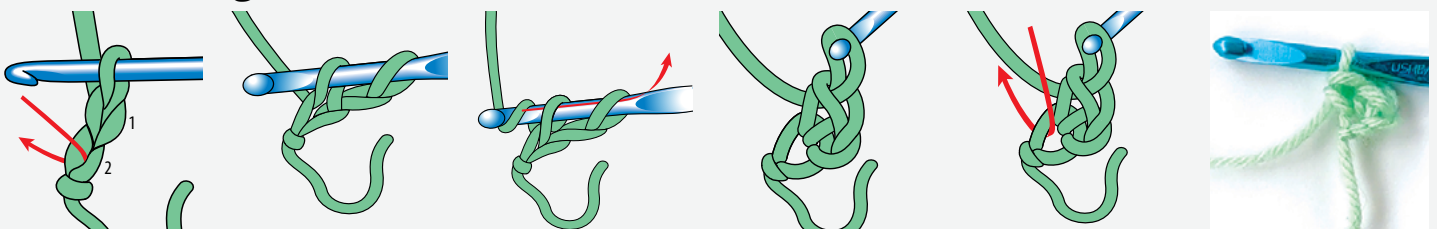


Chain (ch) 2.

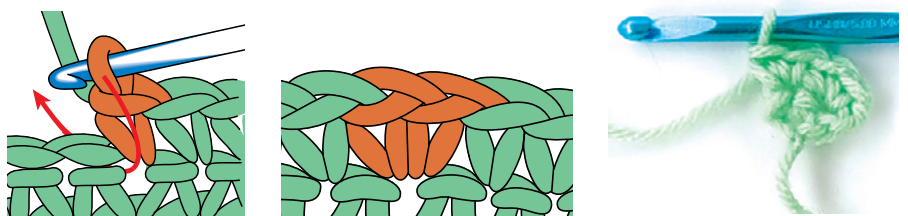


Increase (inc) Section:

1st row: 2 **single crochet** (sc) in 2nd ch from hook. Turn.



2nd row: Ch 1. 2 sc in each of first 2 sc. Turn. 4 sc.



Yarnspirations™
BERNAT®
MAKE THIS

ABBREVIATIONS

Approx = Approximately
Beg = Beginning
Ch = Chain(s)
Cont = Continue(ity)
Dec = Decrease
Inc = Increase
Pat = Pattern

Rem = Remain
Rep = Repeat
RS = Right side
Sc = Single crochet
Sc2tog = Draw up a loop in each of next 2 stitches. Yoh and draw through all loops on hook.

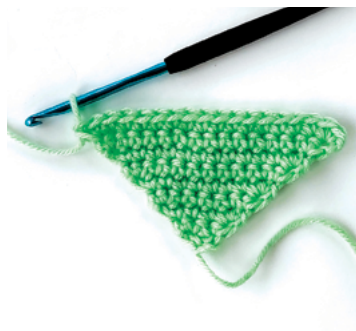
Sl st = Slip stitch
St(s) = Stitch(es)
Tog = Together
WS = Wrong side
Yoh = Yarn over hook

INSTRUCTIONS

3rd row: Ch 1. 2 sc in first sc. 1 sc in each sc to last sc. 2 sc in last sc. Turn. 6 sc.



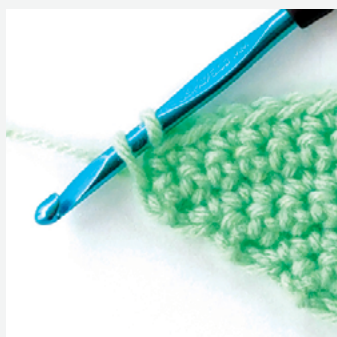
4th to 18th rows: Repeat (rep) 3rd row 15 times more until there are 36 sc.



19th row: Ch 1. 1 sc in each sc to end of row.** Join Color 2. Break Color 1. Turn.

Notes:

- To change color, work to last 2 loops on hook and draw new color through last 2 loops, then proceed in new color.



Yarnspirations™
BERNAT®
MAKE THIS

ABBREVIATIONS

Approx = Approximately
Beg = Beginning
Ch = Chain(s)
Cont = Continue(ity)
Dec = Decrease
Inc = Increase
Pat = Pattern

Rem = Remain
Rep = Repeat
RS = Right side
Sc = Single crochet
Sc2tog = Draw up a loop in each of next 2 stitches. Yoh and draw through all loops on hook.

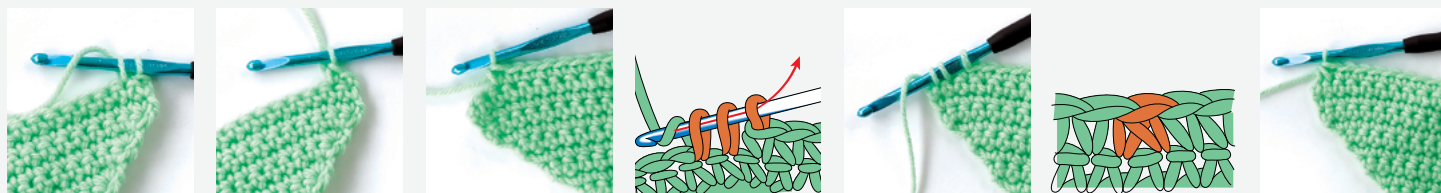
Sl st = Slip stitch
St(s) = Stitch(es)
Tog = Together
WS = Wrong side
Yoh = Yarn over hook

INSTRUCTIONS

With Color 2, continue (cont) with Decrease (dec) Section as follows:

20th row: Ch 1. 1 sc in each sc to end of row. Turn.

21st row: Ch 1. Skip first sc. 1 sc in next sc. 1 sc in each sc to last 2 sc. Single crochet 2 together (**sc2tog**). Turn. 34 stitches (sts).

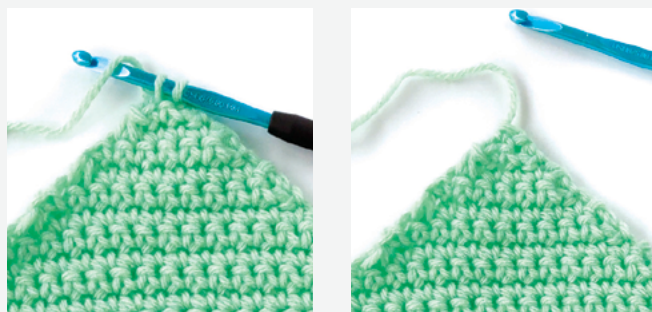


22nd to 36th rows: Rep 21st row 15 times more until 4 sts remain (rem).

37th row: Ch 1. Skip first sc. 1 sc in next sc. Sc2tog. Turn. 2 sts.



38th row: Ch 1. Skip first sc. 1 sc in last sc.
Fasten off.



Yarnspirations™
BERNAT®
MAKE THIS

ABBREVIATIONS

Approx = Approximately
Beg = Beginning
Ch = Chain(s)
Cont = Continue(ity)
Dec = Decrease
Inc = Increase
Pat = Pattern

Rem = Remain
Rep = Repeat
RS = Right side
Sc = Single crochet
Sc2tog = Draw up a loop in each of next 2 stitches. Yoh and draw through all loops on hook.

Sl st = Slip stitch
St(s) = Stitch(es)
Tog = Together
WS = Wrong side
Yoh = Yarn over hook

INSTRUCTIONS

Bias Half-Square

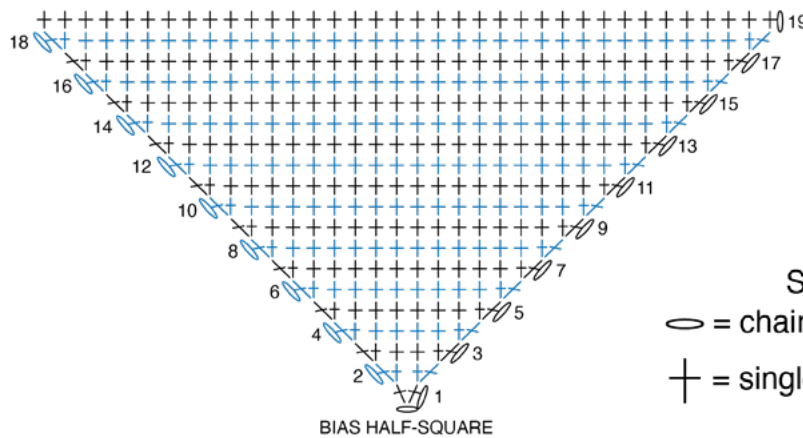
Make 6 - Color 1 is A (Half Square XV)

Make 4 - Color 1 is B (Half Square XVI)

Make 8 - Color 1 is C (Half Square XVII)

Work from ** to ** as for Bias Square (to end of 19th row).

Fasten off.



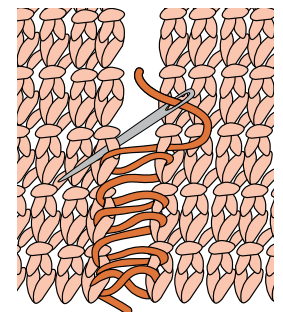
STITCH KEY
 o = chain (ch)
 + = single crochet (sc)

Blocking

Pin Bias Squares and Half Squares to measurements.
 Cover with a damp cloth and let dry.

FINISHING

Seaming: Right side (RS). With appropriate color, mattress st Bias Squares and Half Squares together (tog) as shown in Assembly Diagram (see page 10), rotating Squares as necessary to achieve pattern. Join Squares into 10 diagonal Strips, and then join 10 Strips tog diagonally in opposite direction.



Mattress Stitch

Yarnspirations™
BERNAT®
MAKE THIS

ABBREVIATIONS

Approx = Approximately
Beg = Beginning
Ch = Chain(s)
Cont = Continue(ity)
Dec = Decrease
Inc = Increase
Pat = Pattern

Rem = Remain

Rep = Repeat

RS = Right side

Sc = Single crochet

Sc2tog = Draw up a loop in each of next 2 stitches. Yoh and draw through all loops on hook.

Sl st = Slip stitch

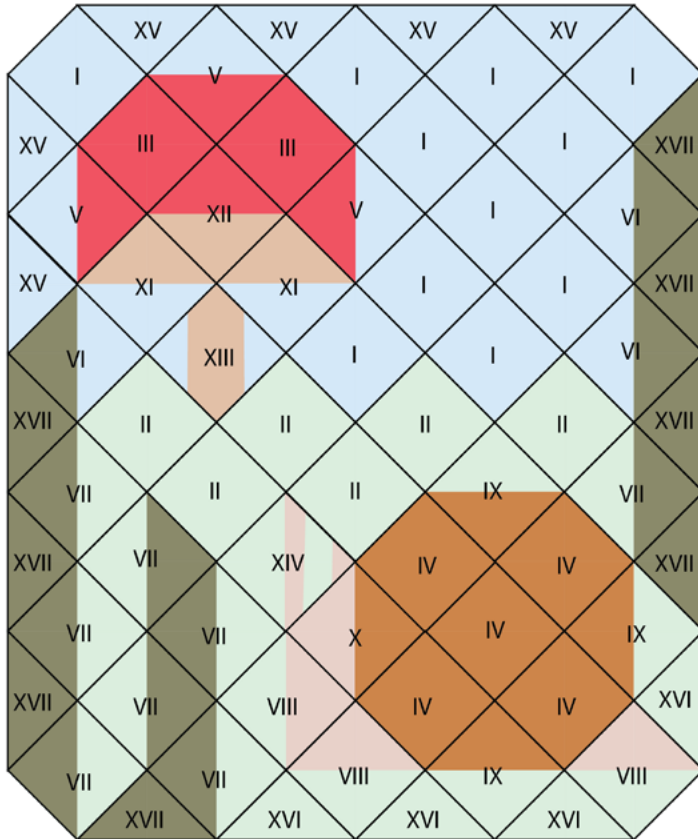
St(s) = Stitch(es)

Tog = Together

WS = Wrong side

Yoh = Yarn over hook

INSTRUCTIONS



Assembly Diagram

KEY

- I = Bias Square - Colors 1 and 2 are A
- II = Bias Square - Colors 1 and 2 are B
- III = Bias Square - Colors 1 and 2 are E
- IV = Bias Square - Colors 1 and 2 are F
- V = Bias Square - Color 1 is A and Color 2 is E
- VI = Bias Square - Color 1 is A and Color 2 is C
- VII = Bias Square - Color 1 is B and Color 2 is C
- VIII = Bias Square - Color 1 is B and Color 2 is D
- IX = Bias Square - Color 1 is B and Color 2 is F
- X = Bias Square - Color 1 is D and Color 2 is F
- XI = Bias Square - Color 1 is A and Color 2 is D
- XII = Bias Square - Color 1 is D and Color 2 is E
- XIII = Bias Square with Stripe Pat XIII
- XIV = Bias Square with Stripe Pat XIV
- XV = Bias Half Square - Color 1 is A
- XVI = Bias Half Square - Color 1 is B
- XVII = Bias Half Square - Color 1 is C

Square Detail Motifs (Make 7)
 With D, ch 9.



1st row: 1 sc in 2nd ch from hook. 1 sc in each ch to end of ch. Turn. 8 sc.



Yarnspirations™
BERNAT®
MAKE THIS

ABBREVIATIONS

Approx = Approximately
Beg = Beginning
Ch = Chain(s)
Cont = Continue(ity)
Dec = Decrease
Inc = Increase
Pat = Pattern

Rem = Remain
Rep = Repeat
RS = Right side
Sc = Single crochet
Sc2tog = Draw up a loop in each of next 2 stitches. Yoh and draw through all loops on hook.

Sl st = Slip stitch
St(s) = Stitch(es)
Tog = Together
WS = Wrong side
Yoh = Yarn over hook

INSTRUCTIONS

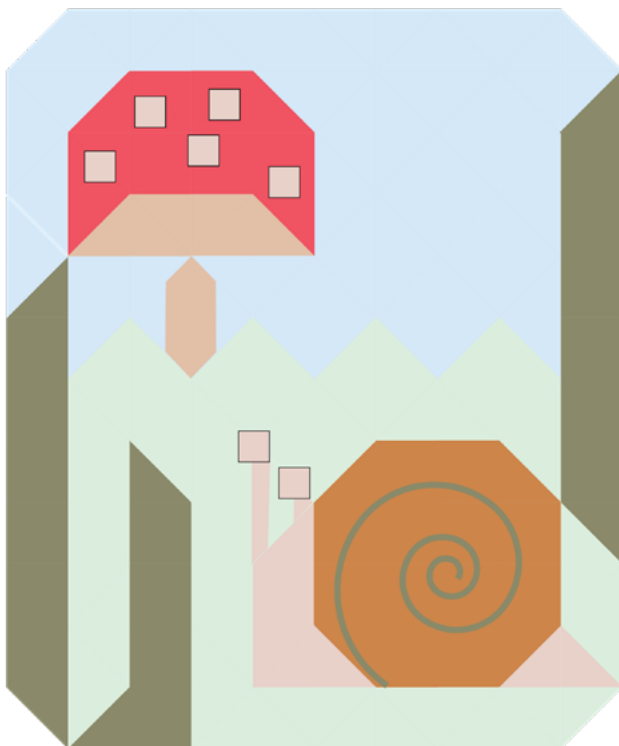
2nd row: Ch 1. 1 sc in each sc across. Turn.

Rep 2nd row until work from beginning (beg) measures approx 2½" [6 cm].

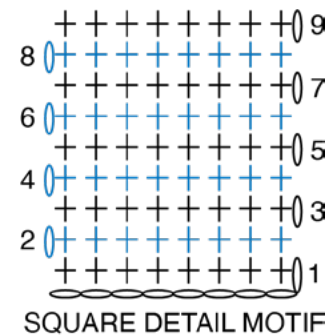
Fasten off.



With D, sew each Square Detail Motif into place following Finishing Diagram (as shown in photo).



Finishing Diagram



STITCH KEY

○ = chain (ch)
 + = single crochet (sc)

KEY

□ = Square Detail Motif
 | = Surface Slip Stitch Detail

Yarnspirations™
BERNAT®
MAKE THIS

ABBREVIATIONS

Approx = Approximately
Beg = Beginning
Ch = Chain(s)
Cont = Continue(ity)
Dec = Decrease
Inc = Increase
Pat = Pattern

Rem = Remain

Rep = Repeat

RS = Right side

Sc = Single crochet

Sc2tog = Draw up a loop in each of next 2 stitches. Yoh and draw through all loops on hook.

Sl st = Slip stitch

St(s) = Stitch(es)

Tog = Together

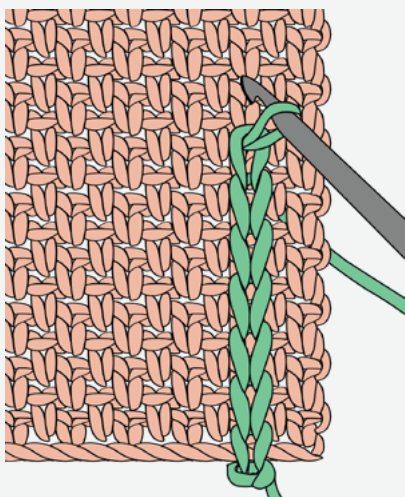
WS = Wrong side

Yoh = Yarn over hook

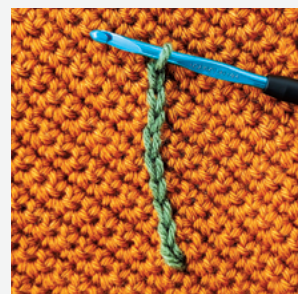
INSTRUCTIONS

Surface Slip Stitch Shell Detail

With RS facing, join C with **slip stitch** (sl st) to bottom edge of Shell (as shown in Finishing Diagram on page 11). Keeping yarn at back [wrong side (WS)] of work, sl st through Blanket evenly in a spiral as shown in Finishing Diagram and photo. Fasten off and pull end of yarn through to WS of Blanket and weave in ends.



Surface Slip Stitch



We love seeing your makes! Share your photos using #YARNSPO and tag us @yarnspirations on Instagram or find us on Facebook.