



CROCHET | SKILL LEVEL: **EASY**

ABBREVIATIONS

Approx = Approximately
Ch = Chain(s)
Cont = Continue(ity)
Pat = Pattern
Rep = Repeat
Rnd(s) = Round(s)

RS = Right side
Sc = Single crochet
Sl st = Slip stitch
Sp(s) = Space(s)
St(s) = Stitches(es)

MEASUREMENTS

Approx 56" x 58" [142 x 147 cm].

GAUGE

17 sts and 15 rows = 4" [10 cm] in pat.

INSTRUCTIONS

Notes:

- Join all rnds with sl st to first sc.
- To change color, work to last 2 loops on hook and draw new color through last 2 loops, then proceed in new color.
- Moss St Pat worked over foundation chain multiple of 2. See Diagram on page 2.

Stripe Pat

Work 9 rnds in each color in the following sequence: MC, A, B and C. These 36 rnds form Stripe Pat.

With MC, ch 12.

1st rnd: 1 sc in 2nd ch from hook and in each ch to last ch. 3 sc in last ch. **Do not** turn. Working in opposite side of ch, 1 sc in each ch to last ch. 2 sc in last ch. Join with sl st to first sc. 24 sc.

2nd rnd: Ch 1. (1 sc. Ch 2. 1 sc) in first sc (first corner). Ch 1. Skip next sc. [(1 sc in next sc. Ch 1. Skip next sc) 4 times. (1 sc. Ch 2. 1 sc) in next sc. Ch 1. Skip next sc. (1 sc. Ch 2. 1 sc) in next sc. Ch 1. Skip next sc. [(1 sc in next sc. Ch 1. Skip next sc) 4 times. (1 sc. Ch 2. 1 sc) in next sc. Ch 1. Join with sl st to first sc.

MATERIALS

Bernat® Lattice™ (7.8 oz/220 g; 389 yds/356 m)

Main Color (MC) Golden Hour (19008) **1 ball**

Contrast A Rust Mix (19007) **1 ball**

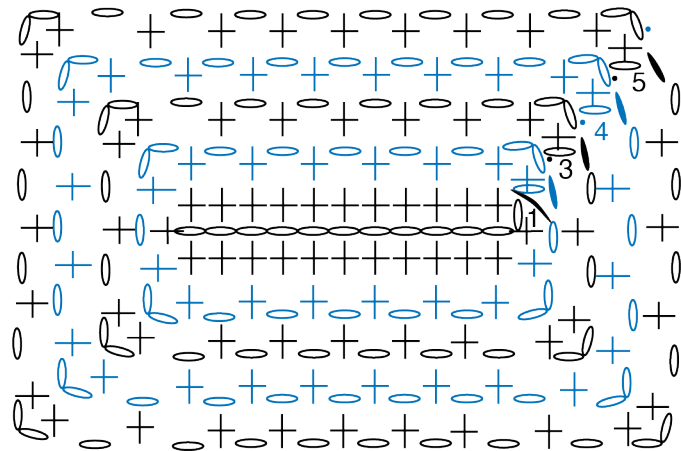
Contrast B Cream (19013) **1 ball**

Contrast C Teal Mix (19010) **1 ball**

Size U.S. J/10 (6.5 mm) Susan Bates® Silvalume® crochet hook **or size needed to obtain gauge.** Susan Bates® stitch markers. Susan Bates® yarn needle.

3rd rnd: Sl st to next ch-2 sp. Ch 1 (1 sc. Ch 2. 1 sc) in same sp as last sl st. [*Ch 1. Skip next sc. 1 sc in next ch-1 sp.* Rep from * to * to next corner ch-2 sp. Ch 1. Skip next sc. (1 sc. Ch 2. 1 sc) in next corner ch-2 sp] 3 times. Rep from * to * to end of rnd. Ch 1. Skip last sc. Join with sl st to first sc.

First 3 rnds of Stripe Pat are complete.
 Keeping cont of Stripe Pat, rep last rnd until 113 rnds are complete.
 Fasten off.



STITCH KEY
 ○ = chain (ch)
 • = slip stitch (sl st)
 + = single crochet (sc)

REDUCED SAMPLE OF BLANKET

