



MATERIALS

Bernat® Softee® Cotton™ (4.2 oz/120 g; 254 yds/232 m)

Contrast A Seaside Blue (69011) **4 balls or 1016 yds/928 m**

Contrast B Golden (69013) **1 ball or 254 yds/232 m**

Bernat® Softee® Baby Cotton™ (4.2 oz/120 g; 254 yds/232 m)

Contrast C Aqua Mist (52010) **3 balls or 742 yds/678.5 m**

Size U.S. G/6 (4 mm) Susan Bates® Silvalume® crochet hook **or size needed to obtain gauge.**



CROCHET | SKILL LEVEL: **INTERMEDIATE**

ABBREVIATIONS

Approx = Approximately

Ch = Chain(s)

Cont = Continue(ity)

Dc = Double crochet

Mosaic Dc = Working in front of chain spaces, work 1 dc in skipped stitch 3 rows below

Pat = Pattern

Rep = Repeat

Rnd = Round

RS = Right side

Sc = Single crochet

Sl st = Slip stitch

Sp(s) = Space(s)

St(s) = Stitch(es)

WS = Wrong side

Yoh = Yarn over hook

MEASUREMENTS

Approx 36½" x 41" [92.5 x 104 cm].

GAUGE

16 sc and 20 rows = 4" [10 cm].

INSTRUCTIONS

Notes:

- To change color, work to last 2 loops on hook of previous color. Yoh with new color, draw through loops, and proceed with new color.
- Carry yarn when not in use loosely up side of work unless otherwise stated.
- Each skipped sc has ch-sp worked above it for 2 rows (i.e. if you skip 1 sc, you will ch-2 above it). This establishes 'gap' where Mosaic dc will later be worked.
- Mosaic dc always replaces sc directly behind it on working row.
- WS of your work maintains alternating 2-row striped pat as you work in front of ch-sps each time you work Mosaic dc – **do not** work around ch-sps. The ch-sps are positioned behind Mosaic dc.

Stripe Pat

With A work 4 rows. Break A. Join C. With C, work 6 rows. Break C. Join A. Rep last 10 rows twice more. These 30 rows form Stripe Pat.

BLANKET

With A, ch 146 (multiple of 10 ch + 6).
1st row: (RS). 1 sc in 2nd ch from hook. 1 sc in each ch to end of chain. Turn. 145 sc.

2nd row: Ch 1. 1 sc in each sc to end of row. Turn.
 First 2 rows of Stripe Pat are complete.

Keeping cont of Stripe Pat, rep 2nd row until all 30 rows of Stripe Pat are complete.

31st to 34th rows: With A, ch 1. 1 sc in each sc to end of row. After 34th row, Break A. Join B. Turn.

Proceed in Mosaic Pat as follows (see diagram on page 3):

35th to 38th rows: With B, ch 1. 1 sc in each sc to end of row. Turn. After 38th row, join A.

39th row: With A, ch 1. 1 sc in each of first 3 sc. *(Ch 2. Skip next sc. 1 sc in each of next 3 sc) twice. Ch 2. Skip next sc. 1 sc in next sc. Rep from * to last 2 sts. 1 sc in each of last 2 sts. Turn.

40th row: Ch 1. 1 sc in each of first 3 sc. *(Ch 2. Skip next ch-2. 1 sc in each of next 3 sc) twice. Ch 2. Skip next ch-2. 1 sc in next sc. Rep from * to last 2 sts. 1 sc in each of last 2 sc. Turn.

41st row: With B, ch 1. 1 sc in each of first 3 sc. *Mosaic dc in next st 3 rows below (38th row). Skip next ch-2. Ch 2. Skip next sc. 1 sc in each of next 2 sc. Mosaic dc. Skip next ch-2. 1 sc in each of next 2 sc. Ch 2. Skip next sc. Mosaic dc. Skip next ch-2. 1 sc in next sc. Rep from * to last 2 sts. 1 sc in each of last 2 sts. Turn.

42nd row: Ch 1. 1 sc in each of first 4 sts. *Ch 2. Skip next ch-2. 1 sc in each of next 5 sts. Ch 2. Skip next ch-2. 1 sc in each of next 3 sts. Rep from * to last sc. 1 sc in last sc. Turn.

43rd row: With A, ch 1. 1 sc in each of first 4 sc. *Mosaic dc in next st 3 rows below (40th row). Skip next ch-2. Ch 2. Skip next sc. 1 sc in each of next 3 sc. Ch 2. Skip next sc. Mosaic dc. Skip next ch-2. 1 sc in each of next 3 sc. Rep from * to last sc. 1 sc in last sc. Turn.

44th row: Ch 1. 1 sc in each of first 5 sts. *Ch 2. Skip next ch-2. 1 sc in each of next 3 sc. Ch 2. Skip next ch-2. 1 sc in each of next 5 sts. Rep from* to end of row. Turn.

45th row: With B, ch 1. 1 sc in each of first 2 sc. *Ch 2. Skip next sc. 1 sc in each of next 2 sc. Mosaic dc in next st 3 rows below (42nd row). Skip next ch-2. Ch 2. Skip next sc. 1 sc in next sc. Ch 2. Skip next sc. Mosaic dc. Skip next ch-2. 1 sc in each of next 2 sc. Rep from * to last 3 sc. Ch 2. Skip next sc. 1 sc in each of last 2 sc. Turn.

46th row: Ch 1. 1 sc in each of first 2 sc. Ch 2. Skip next ch-2. *1 sc in each of next 3 sts. Ch 2. Skip next ch-2. 1 sc in next sc. Ch 2. Skip next ch-2. 1 sc in each of next 3 sts. Ch 2. Skip next ch-2. Rep from * to last 2 sc. 1 sc in each of last 2 sc. Turn.

47th row: With A, ch 1. 1 sc in each of first 2 sc. *Mosaic dc in next st 3 rows below (44th row). Skip next ch-2. 1 sc in each of next 2 sc. Ch 2. Skip next sc. Mosaic dc. Skip next ch-2. 1 sc in next sc. Mosaic dc. Skip next ch-2. Ch 2. Skip next sc. 1 sc in each of next 2 sc. Rep from * to last 3 sts. Mosaic dc. Skip next ch-2. 1 sc in each of last 2 sc. Turn.

48th row: Ch 1. 1 sc in each of first 5 sts. *Ch 2. Skip next ch-2. 1 sc in each of next 3 sts. Ch 2. Skip next ch-2. 1 sc in each of next 5 sts. Rep from * to end of row. Turn.

49th row: With B, ch 1. 1 sc in each of first 4 sc. *Ch 2. Skip next sc. Mosaic dc in next st 3 rows below (46th row). Skip next ch-2. 1 sc in each of next 3 sc. Mosaic dc. Skip next ch-2. Ch 2. Skip next sc. 1 sc in each of next 3 sc. Rep from * to last sc. 1 sc in last sc. turn.

50th row: Ch 1. 1 sc in each of first 4 sc. *Ch 2. Skip next ch-2. 1 sc in each of next 5 sts. Ch 2. Skip next ch-2. 1 sc in each of next 3 sc. Rep from * to last sc. 1 sc in last sc. Turn.

51st row: With A, ch 1. 1 sc in each of first 3 sc. *Ch 2. Skip next sc. Mosaic dc in next st 3 rows below (48th row). Skip next ch-2. 1 sc in each of next 2 sc. Ch 2. Skip next sc. 1 sc in each of next 2 sc. Mosaic dc. Skip next ch-2. Ch 2. Skip next sc. 1 sc in next sc. Rep from * to last 2 sc. 1 sc in each of last 2 sc. Turn.

52nd row: Ch 1. 1 sc in in each of first 3 sc. *(Ch 2. Skip next ch-2. 1 sc in each of next 3 sts) twice. Ch 2. Skip next ch-2. 1 sc in next sc. Rep from * to last 2 sc. 1 sc in each of last 2 sc. Turn. Break A.

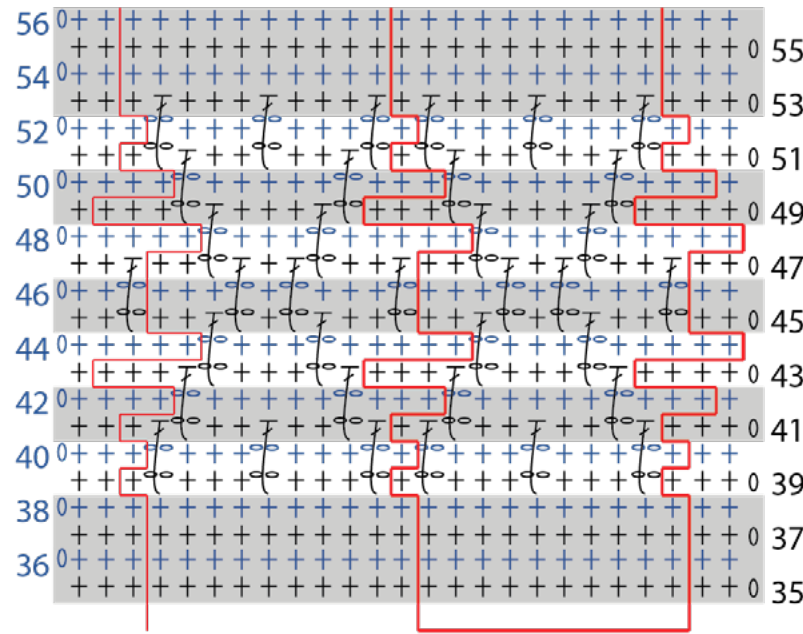
53rd row: With B, ch 1. 1 sc in each of first 3 sc. *[Mosaic dc in next st 3 rows below (50th row). Skip next ch-2. 1 sc in each of next 3 sc] twice. Mosaic dc. Skip next ch-2. 1 sc in next sc. Rep from * to last 2 sc. 1 sc in each of last 2 sc. Turn.

54th to 56th rows: Ch 1. 1 sc in each st to end of row. Turn.
After 56th row, join A. Break B.

Rep 1st to 30th rows twice, then rep 1st to 56th rows once, then rep 1st to 34th rows once. Fasten off.

Edging rnd: (RS). Join A with sl st to any corner of Blanket. Ch 1. Work sc evenly around Blanket, working around yarn carried loosely up side of work to enclose it and working 3 sc in each corner. Join with sl st to first sc. Fasten off.

MOSAIC PAT



10 STITCH REPEAT
(As indicated in text)

REDUCED SAMPLE OF PATTERN
(shown over stitch multiple of 10 sts + 5)

STITCH KEY

- = chain (ch)
- ⊕ = single crochet (sc)
- ⌈ = mosaic double crochet (Mosaic dc)

