



CROCHET | SKILL LEVEL: **BEGINNER**

ABBREVIATIONS

Approx = Approximately

Beg = Beginning

Ch = Chain(s)

Cont = Continue

Dc = Double crochet

Dcbp = Yoh and draw up a loop around post of next stitch at back of work, inserting hook from right to left. (Yoh and draw through 2 loops on hook) twice.

Dcfp = Yoh and draw up a loop around post of next stitch at front of work, inserting hook from right to left. (Yoh and draw through 2 loops on hook) twice.

Hdc = Half double crochet

Pat = Pattern

Rem = Remain(ing)

Rep = Repeat

RS = Right side

St(s) = Stitch(es)

WS = Wrong side

Yoh = Yarn over hook

MATERIALS

Bernat® Forever Fleece Tweeds™ (8.8 oz/250 g; 158 yds/145 m)

Ivy Tweed (79012)

8 balls or 1200 yds/1102 m

Size U.S. P/16 (11.5 mm) Susan Bates® crochet hook **or size needed to obtain gauge.** Susan Bates® yarn needle.

MEASUREMENT

Approx 48" [122 cm] square.

GAUGE

6.5 sts and 4 rows = 4" [10 cm] in pat.

INSTRUCTIONS

Note: Chain (ch) 2 at beginning (beg) of row **does not** count as stitch (st).

Ch 80. *See diagram on page 2.*

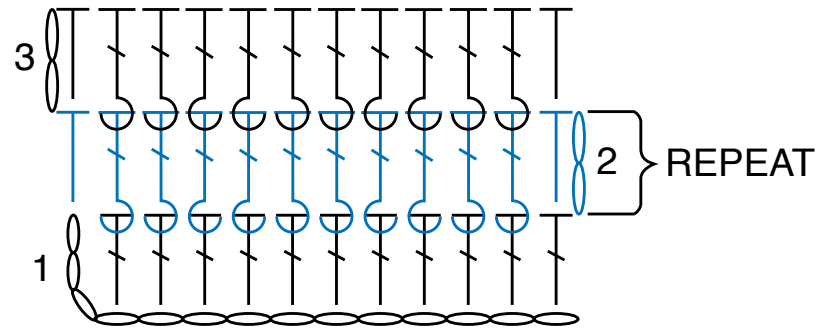
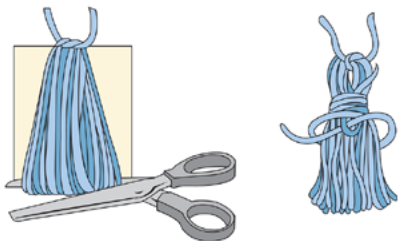
1st row: (WS). 1 double crochet (dc) in 3rd ch from hook. 1 dc in each ch to end of ch. Turn. 78 dc.

2nd row: (RS). Ch 2. 1 half double crochet (hdc) in first st. *1 double crochet around front post (dcfp) of each of next 2 sts. 1 double crochet around back post (dcbp) of each of next 2 sts. Rep from * to last 3 sts. 1 dcfp around each of next 2 sts. 1 hdc in last st. Turn.

Rep 2nd row for pattern (pat). Continue (cont) in pat until work from beg measures approximately (approx) 48" [122 cm], ending on a WS row. Fasten off.

Tassels (make 4).

Cut a piece of cardboard 6" [15 cm] wide. Wind yarn around cardboard 40 times. Break yarn leaving a long end and thread end through needle. Slip needle through all loops and tie tightly. Remove cardboard and wind yarn tightly around loops 1" [2.5 cm] below fold. Fasten securely. Cut through remaining (rem) loops and trim ends evenly. Sew Tassels to each corner of Blanket.



REDUCED SAMPLE OF PATTERN

STITCH KEY

- = chain (ch)
- = slip stitch (sl st)
- = half double crochet (hdc)
- = double crochet (dc)
- = front post double crochet (dcfp)
- = back post double crochet (dcbp)

