



Version 1



Version 2



SUPER BULKY



CROCHET | SKILL LEVEL: **EASY**

MATERIALS

Version 1

Bernat® Plush™ (8.8 oz/250 g; 146 yds/133 m)

Main Color (MC) Almandine (68056) or

Spruce (68027)

2 balls or 287 yds/262 m

Contrast A Fuchsia Wave (68033) or

Deep Woods (68025)

3 balls or 438 yds/399 m

Size U.S. N/15 (10 mm) Susan Bates® Silvalume® crochet hook **or size needed to obtain gauge.** Susan Bates® steel yarn needle.

Version 2

Bernat® Blanket™ Perfect Phasing (10.5 oz/300 g; 220 yds/201 m)

Main Color (MC) and Contrast A

Fuchsia (43003)

3 balls or 509 yds/465.5 m

Size U.S. L/11 (8 mm) Susan Bates® Silvalume® crochet hook **or size needed to obtain gauge.** Susan Bates® steel yarn needle.

MEASUREMENTS

Version 1

Approx 35 x 37½" [89 x 95 cm].

Version 2

Approx 37½" x 38½" [95 x 98 cm].

GAUGE

8 sts and 4.25 rows = 4" [10 cm] in Grid Pat.

Note: Versions 1 and 2 quote different hook sizes to achieve same gauge due to different yarns used – please double check your hook size and gauge before beginning – if you have too many stitches per 4" [10 cm], try going up a hook size; if you have too few stitches per 4" [10 cm] try going down a hook size. The hook size you use may vary to achieve this gauge.

ABBREVIATIONS

Approx = Approximately

Beg = Begin(ning)

Ch = Chain(s)

Chainless beg dc = Pull up tall loop to height of a standard double crochet. Hold top of tall loop in place with finger throughout. Move head of hook around front and in behind tall loop to create 2nd loop on hook. Draw up a loop in first stitch. (Yoh and draw through 2 loops on hook) twice.

Cont = Continue(ity)

Dc = Double crochet

Pat = Pattern

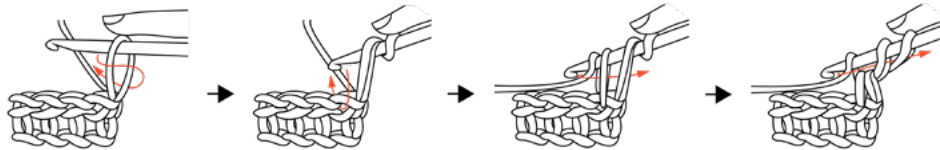
Rep = Repeat

RS = Right side

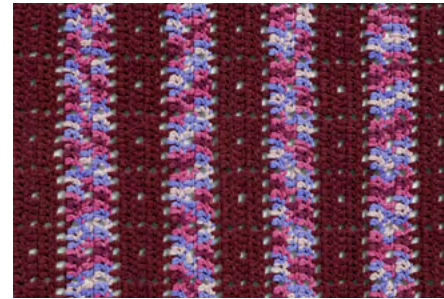
Sp(s) = Space(s)

St(s) = Stitch(es)

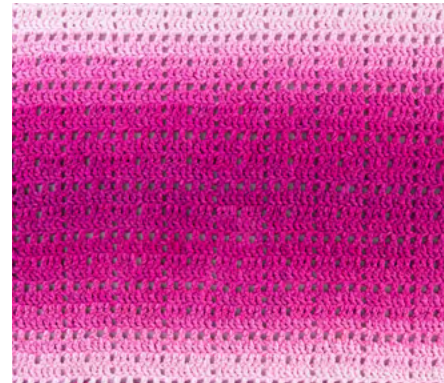
WS = Wrong side



INSTRUCTIONS



Version 1



Version 2

Notes:

All Versions

- Chainless beg dc counts as 1 dc.
- Worked over foundation ch multiple of 8 ch +6.

Version 1 – Bernat® Plush™

- Blanket is worked from side to side.

Version 2 - Bernat® Blanket™ Perfect Phasing

- Blanket is worked from bottom to top edge.
- Beg working from lightest end of yarn at bottom edge of Blanket.
- Blanket is worked in 1 shade only and **does not** use Stripe Pat.
- To maintain ombre effect join next ball from opposite end so shades match (darkest end to darkest end or lightest end to lightest end) as necessary, resulting in a fade from light-to-dark to dark-to-light, and back again across the Blanket.

BLANKET

Version 1 - Stripe Pat

With MC, work 5 rows. Join A. Break MC.

*With A, work 3 rows. Join MC. Break A.

With MC, work 5 rows. Join A. Break MC.

Rep from * 3 times more.

These 37 rows form Stripe Pat.

BLANKET BODY

With MC, loosely ch 78.

Version 1 only: Beg working in Stripe Pat.

Set-up 1st row: (RS). 1 dc in 6th ch from hook (counts as 1 dc. Ch 1. 1 dc). *Ch 1. Skip next ch. 1 dc in next ch. Rep from * to end of chain. Turn. 38 dc (including turn ch as 1 dc).

Cont in Grid Pat as follows:

1st row: (WS). 1 chainless beg dc in first dc (counts as 1 dc throughout). *Ch 1. Skip next ch-1 sp. (1 dc in next dc. 1 dc in next ch-1 sp) 3 times. 1 dc in next dc. Rep from * to last ch-1 sp. Ch 1. Skip last ch-1 sp. 1 dc in last dc. Turn. 65 dc.

2nd row: (RS). 1 chainless beg dc in first dc. Ch 1. Skip next ch-1 sp. *1 dc in each of next 3 dc. Ch 1. Skip next dc. 1 dc in each of next 3 dc. Ch 1. Skip next ch-1 sp. Rep from * to last dc. 1 dc in last dc. Turn. 56 dc.

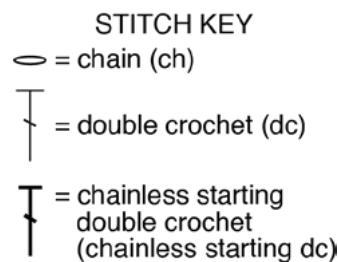
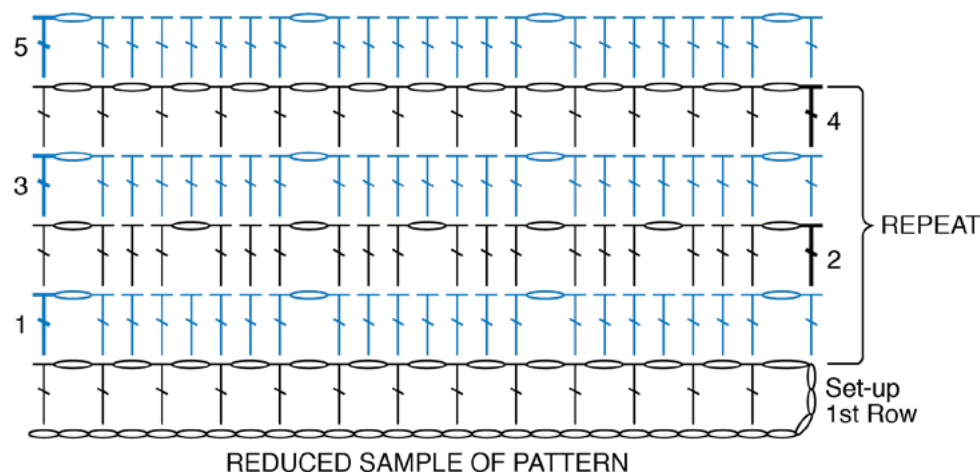
3rd row: 1 chainless beg dc in first dc. *Ch 1. Skip next ch-1 sp. 1 dc in each of next 3 dc. 1 dc in next ch-1 sp. 1 dc in each of next 3 dc. Rep from * to last ch-1 sp. Ch 1. Skip last ch-1 sp. 1 dc in last dc. Turn. 65 dc.

4th row: 1 chainless beg dc in first dc. Ch 1. Skip next ch-1 sp. *(1 dc in next dc. Ch 1. Skip next dc) 3 times. 1 dc in next dc. Ch 1. Skip next ch-1 sp. Rep from * to last dc. 1 dc in last dc. Turn. 38 dc.

Version 1 only: First 5 rows of Stripe Pat are complete. Keeping cont of Stripe Pat, rep 1st to 4th rows 8 times more until 37 rows of Stripe Pat are complete. Fasten off.

Version 2 only: First 5 rows of Pat are complete. Rep 1st to 4th rows 9 times more. Fasten off.

Blocking: Pin Blanket to measurements. Cover with a damp towel to dry.





Version 1



Version 2

EMBROIDERY

Notes:

Version 1

- Version 1 was worked side-to-side, so foundation chain is side edge of Blanket.

Version 2

- Version 2 was worked from bottom to top edge, so foundation chain is bottom edge of Blanket.
- Choose sections of yarn from ball for embroidery with contrasting color to edge of Blanket being worked to ensure stitching is visible (alternately tone-on-tone will also produce a lovely texture).

Bottom Edging: With RS facing, A and yarn needle, embroider flower in each 'square' along Bottom Edge of Blanket grid as shown in diagram.

Step 1: Cut strand of A 108" [274.5 cm] long and thread onto yarn needle.

Step 2: Embroider yarn onto Blanket (up through hole 1 and down through hole 2) twice, yarn wrapping over RS and under WS of Blanket, being careful not to pull too tight and pucker fabric. Cont as established (up through hole 1 and down through next hole) twice, yarn wrapping over RS and under WS of Blanket, until all 13 indicated holes have been worked (leaving corner holes un-worked).

Step 3: Fasten off yarn at WS of work and weave in ends as invisibly as possible.

Rep Steps 1 to 3 for each square along bottom edge (total of 9 squares/final flowers).

Top Edging: Work as for Bottom Edging across top edge.

