



CROCHET | SKILL LEVEL: **EASY**

ABBREVIATIONS

Beg = Beginning

Rep = Repeat

Sp(s) = Space(s)

Ch = Chain(s)

Rnd(s) = Round(s)

Dc = Double crochet

Sc = Single crochet

MEASUREMENT

Approx 33" [84 cm] square.

GAUGE

6.5 dc and 4 rows = 4" [10 cm].

INSTRUCTIONS

Notes:

- Ch 3 at beg of rnd counts as dc.
- Join = Join with hdc to top of ch-3.

With MC, ch 4. Join with sl st to first ch to form ring. See diagram on page 2.

1st rnd: Ch 4 (counts as dc and ch 1). (1 dc. Ch 1) 6 times in ring. 1 dc in ring. Join.

2nd rnd: Ch 3. 1 dc around post of joining hdc - beg dc made. *1 dc in next dc. Ch 1. Skip next ch-1 sp. 1 dc in next dc. (2 dc. Ch 3. 2 dc) in next ch-1 sp. Rep from *, ending with 2 dc in last ch-1 sp. Ch 1. Join.

3rd rnd: Ch 3. Beg dc. *1 dc in each of next 2 dc. Ch 1. Skip next dc. 1 dc in next ch-1 sp. Ch 1. Skip next dc. 1 dc in each of next 2 dc. (2 dc. Ch 3. 2 dc) in next ch-3 sp. Rep from *, ending with 2 dc in last ch-1 sp. Ch 1. Join.

4th rnd: Ch 3. Beg dc. *1 dc in each of next 3 dc. Ch 1. Skip next dc. 1 dc in next ch-1 sp. 1 dc in next dc. 1 dc in next ch-1 sp. Ch 1. Skip next dc. 1 dc in each of next 3 dc. (2 dc. Ch 3. 2 dc) in next ch-3 sp. Rep from *, ending with 2 dc in last ch-1 sp. Ch 1. Join.

5th rnd: Ch 3. Beg dc. *1 dc in each of next 4 dc. Ch 1. Skip next dc. 1 dc in next ch-1 sp. 1 dc in each of next 3 dc. 1 dc in next ch-1 sp. Ch 1. Skip next dc. 1 dc in each of next 4 dc. (2 dc. Ch 3. 2 dc) in next ch-3 sp. Rep from *, ending with 2 dc in last ch-1 sp. Ch 1. Join.

MATERIALS

Bernat® Baby Blanket™ (10.5 oz/300 g; 220 yds/201 m)

Main Color (MC) Seafoam (04736)

2 balls or 440 yds/400 m

Contrast A Lemon Lime (04223)

1 ball or 220 yds/201 m

Size U.S. N/13 (9 mm) Susan Bates® Silvalume® crochet hook **or size needed to obtain gauge.** Susan Bates® yarn needle.

6th rnd: Ch 3. Beg dc. *1 dc in each of next 5 dc. Ch 1. Skip next dc. 1 dc in next ch-1 sp. 1 dc in each of next 2 dc. Ch 1. Skip next dc. 1 dc in each of next 2 dc. 1 dc in next ch-1 sp. Ch 1. Skip next dc. 1 dc in each of next 5 dc. (2 dc. Ch 3. 2 dc) in next ch-3 sp. Rep from *, ending with 2 dc in last ch-1 sp. Ch 1. Join.

7th rnd: Ch 3. Beg dc. *1 dc in each of next 7 dc. 1 dc in next ch-1 sp. Ch 1. Skip next dc. 1 dc in each of next 2 dc. 1 dc in next ch-1 sp. 1 dc in each of next 2 dc. Ch 1. Skip next dc. 1 dc in next ch-1 sp. 1 dc in each of next 7 dc. (2 dc. Ch 3. 2 dc) in next ch-3 sp. Rep from *, ending with 2 dc in last ch-1 sp. Ch 1. Join.

8th rnd: Ch 3. Beg dc. *1 dc in each of next 10 dc. 1 dc in next ch-1 sp. Ch 1. Skip next dc. 1 dc in each of next 3 dc. Ch 1. Skip next dc. 1 dc in next ch-1 sp. 1 dc in each of next 10 dc. (2 dc. Ch 3. 2 dc) in next ch-3 sp. Rep from *, ending with 2 dc in last ch-1 sp. Ch 1. Join.

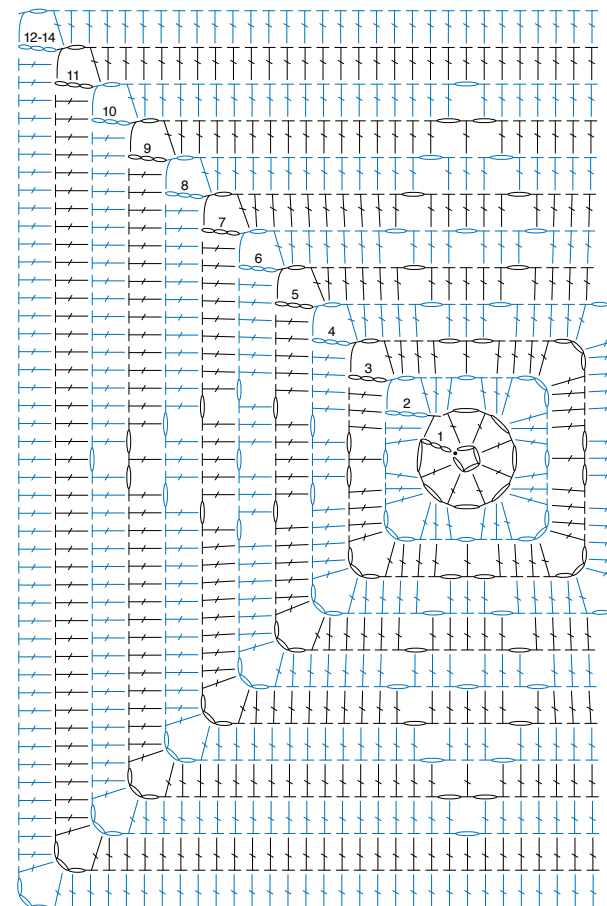
9th rnd: Ch 3. Beg dc. *1 dc in each of next 13 dc. 1 dc in next ch-1 sp. Ch 1. Skip next dc. 1 dc in next dc. Ch 1. Skip next dc. 1 dc in next ch-1 sp. 1 dc in each of next 13 dc. (2 dc. Ch 3. 2 dc) in next ch-3 sp. Rep from *, ending with 2 dc in last ch-1 sp. Ch 1. Join.

10th rnd: Ch 3. Beg dc. *1 dc in each of next 16 dc. 1 dc in next ch-1 sp. Ch 1. Skip next dc. Ch 1. Skip next dc. 1 dc in next ch-1 sp. 1 dc in each of next 16 dc. (2 dc. Ch 3. 2 dc) in next ch-3 sp. Rep from *, ending with 2 dc in last ch-1 sp. Ch 1. Join.

11th rnd: Ch 3. Beg dc. *1 dc in each of next 19 dc. 1 dc in next ch-1 sp. 1 dc in each of next 19 dc. (2 dc. Ch 3. 2 dc) in next ch-3 sp. Rep from *, ending with 2 dc in last ch-1 sp. Ch 1. Join.

12th to 14th rnds: Ch 3. Beg dc. *1 dc in each dc to next ch-3 sp. (2 dc. Ch 3. 2 dc) in next ch-3 sp. Rep from *, ending with 2 dc in last ch-1 sp. Ch 1. Join A at end of last rnd. Break MC.

Edging: 1st rnd: With A, ch 3. Beg dc. *1 dc in each dc to next ch-3 sp (2 dc. Ch 3. 2 dc) in next ch-3 sp. Rep from *, ending with 2 dc in last ch-1 sp. Ch 1. Join. Rep last rnd until work measures 33" [84 cm] square. Fasten off.



STITCH KEY

- = chain (ch)
- = slip stitch (sl st)
- ┆ = half double crochet (hdc)
- ┆ = double crochet (dc)