



CROCHET | SKILL LEVEL: **EASY**

ABBREVIATIONS

Approx =	Dec = Decrease	Sl st = Slip stitch
Approximately	Pat = Pattern	Sp(s) = Space(s)
Beg = Begin(ning)	Rem = Remaining	St(s) = Stitch(es)
Ch = Chain(s)	Rep = Repeat	Tog = Together
Cont = Continue(ity)	RS = Right side	WS = Wrong side
Dc = Double crochet	Sc = Single crochet	

MEASUREMENTS

Approx 36 x 51" [91.5 x 129.5 cm].

GAUGES

7 dc and 4 rows = 4" [10 cm].
2.5 blocks = 4" [10 cm].

INSTRUCTIONS

Notes:

- To maintain ombre effect join next ball from opposite end so shades match (lightest end to lightest end or darkest end to darkest end) as necessary, resulting in a fade from dark-to-light to light-to-dark, and back again across the Blanket.
- Ch 3 at beg of row counts as dc.

Panel 1 (Make 2 each with A and B) See diagram on page 2.

Beg with darkest shade, ch 6. See Chart on page 3. Each square of chart represents 1 block.

1st row: (RS). 1 dc in 4th ch from hook (counts as 2 dc). 1 dc in each of last 2 ch. Turn. 1 block made.

2nd row: Ch 6. 1 dc in 4th ch from hook. 1 dc in each of next 2 ch – beg block made. (Sl st. Ch 3. 3 dc) in next ch-3 sp – block made. Turn. 2 blocks.

3rd row: Beg block. *Block in next ch-3 sp. Rep from * to end of row. Turn. 3 blocks.

Rep last row until 6th row of chart is complete. 6 blocks.

MATERIALS

Bernat® Blanket Perfect Phasing™ (10.5 oz/300 g; 220 yds/201 m)

Contrast A Dark Orchid (43007) **2 balls**

Contrast B Dark Blue (43006) **2 balls**

Size U.S. L/11 (8 mm) Susan Bates® Silvalume® crochet hook **or size needed to obtain gauge.** Susan Bates® yarn needle.

Proceed as follows to work sides even:

7th row: Sl st in each of first 3 dc.
*Block in next ch-3 sp. Rep from * to end of row. Turn.

8th row: Beg block. *Block in next ch-3 sp. Rep from * to last ch-3 sp. Sl st in last ch-3 sp. (**Do not** make a block.) Turn.

9th to 34th rows: Rep last 2 rows 13 times more.

Proceed as follows to dec corner:

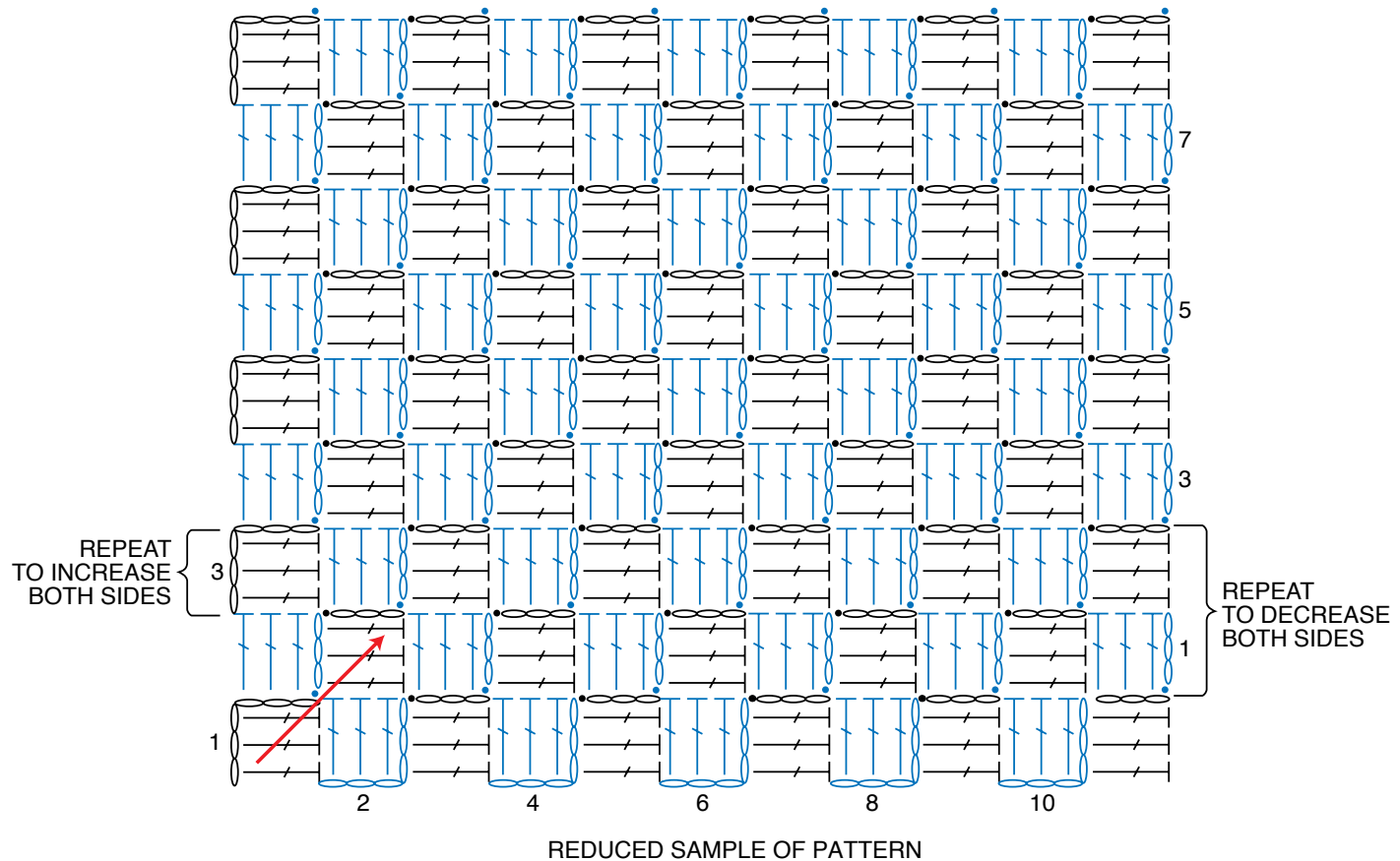
35th row: Sl st in each of first 3 dc.
*Block in next ch-3 sp. Rep from * to last ch-3 sp. Sl st in last ch-3 sp. (**Do not** make a block.) Turn.

Rep last row until 1 block rem. Fasten off.

FINISHING

Joining Panels

Using color to match Panels, sew 4 Panels tog as seen in Assembly Diagram on page 3, noting 1 Panel in each color are mirrored with WS facing, and remaining Panels are RS facing. Take care to align edges and make sure seams are hidden.



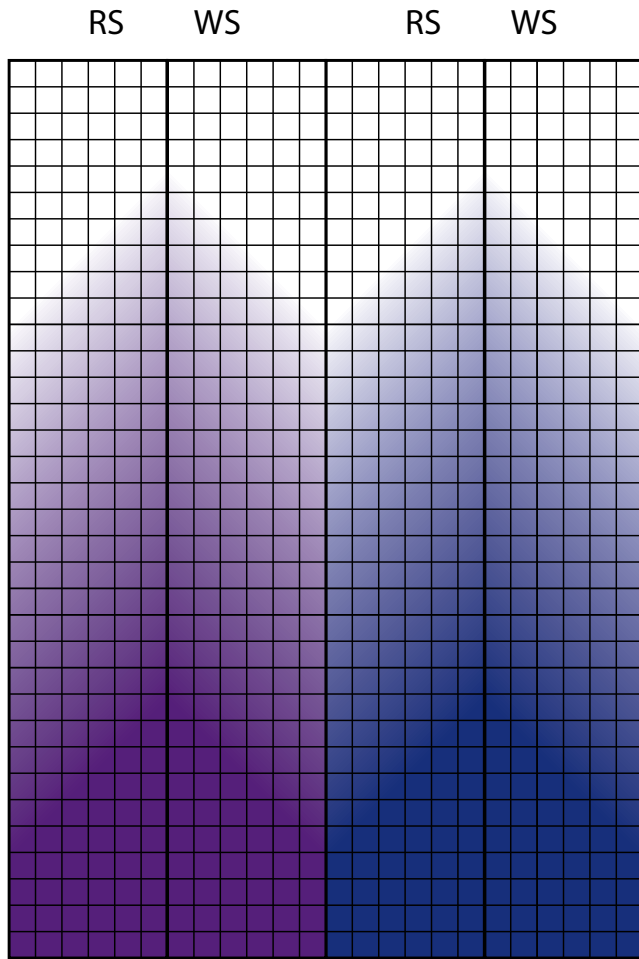
STITCH KEY

○ = chain (ch)

● = slip stitch (sl st)

┆ = double crochet (dc)

ASSEMBLY DIAGRAM



Direction of Work

