



CROCHET | SKILL LEVEL: **EASY**

ABBREVIATIONS

Approx =	Cont = Continue(ity)	RS = Right side
Approximately	Dc = Double crochet	Sc = Single crochet
Beg = Beginning	Pat = Pattern	Sp(s) = Space(s)
Ch = Chain(s)	Rep = Repeat	St(s) = Stitch(es)

MEASUREMENTS

Approx 55" by 60" [139.5 x 152.5 cm].

GAUGE

7 sc and 8 rows = 4" [10 cm].

INSTRUCTIONS

Notes:

- To maintain ombre effect join next ball from opposite end so shades match (lightest end to lightest end or darkest end to darkest end) as necessary, resulting in a fade from dark-to-light to light-to-dark, and back again across the Blanket.
- Ch 3 at beg of row counts as dc.

Stripe Pat

With A, work 4 rows beg with darkest shade.

With B, work 4 rows beg with lightest shade.

These 8 rows form Stripe Pat.

BLANKET

Beg with darkest shade of A, ch 101.

See diagram on page 2.

1st row: (RS). 1 sc in 2nd ch from hook. 1 sc in each of next 3 ch. *1 dc in each of next 4 ch. 1 sc in each of next 4 ch. Rep from * to end of chain. Turn.

2nd row: Ch 1. *1 sc in each of next 4 sc. 1 dc in each of next 4 ch. Rep from * to last 4 sc. 1 sc in each of next 4 sc. Turn.

MATERIALS

Bernat® Blanket Perfect Phasing™ (10.5 oz/300 g; 220 yds/201 m)

Contrast A Deep Black (43001) **3 balls**

Contrast B Deep Teal (43005) **3 balls**

Size U.S. L/11 (8 mm) Susan Bates® Silvalume® hook **or size needed to obtain gauge.** Susan Bates® yarn needle.

3rd row: Ch 3. 1 dc in each of next 3 sts. *1 sc in each of next 4 sts. 1 dc in each of next 4 sts. Rep from * to end of row. Turn.

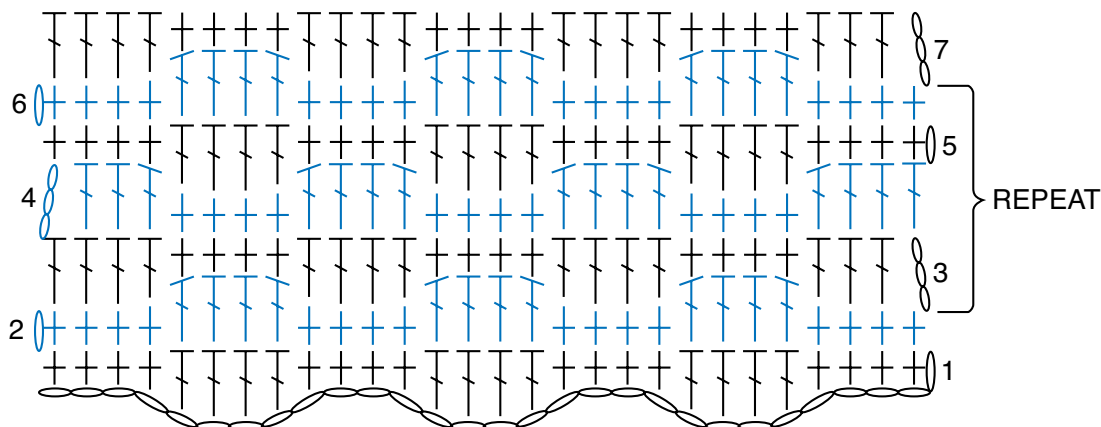
4th row: As 3rd row. Join B.

5th row: Beg with lightest shade of B, ch 1. 1 sc in each of first 4 sts. *1 dc in each of next 4 sts. Rep from * to end of row. Turn.

6th row: As 5th row.

First 6 rows of Stripe Pat are complete.

Keeping cont of Stripe Pat, rep 3rd to 6th rows for Waves Pat until work from beg measures approx 60" [152.5 cm], ending on a 6th row of Waves Pat. Fasten off.



REDUCED SAMPLE OF PATTERN

STITCH KEY

○ = chain (ch)

⊕ = single crochet (sc)

⌚ = double crochet (dc)

