



Tiffany Brown
from Daisy Farm Crafts

Daisy Farm Crafts



CROCHET | SKILL LEVEL: **EASY**

ABBREVIATIONS

Approx = Approximately

Beg = Beginning

Ch = Chain(s)

Cont = Continuity

Hdc = Half double crochet

Hdc2tog = (Yoh and draw up a loop in next stitch/ch) twice. Yoh and draw through all loops on hook.

HdcCl = Yoh and draw up a loop in next st. Yoh and draw up a loop in same st. Yoh and draw through all loops on hook.

Pat = Pattern

Rep = Repeat

Rnd(s) = Round(s)

RS = Right side

Sc = Single crochet

Sl st = Slip stitch

St(s) = Stitch(es)

WS = Wrong side

Yoh = Yarn over hook

MATERIALS

Bernat® Bundle Up™ (4.9 oz/140 g; 267 yds/244 m)

Main Color (MC) Cloud White (74028) **2 balls**

Contrast A Brook (74012) **1 ball**

Contrast B Posy (74023) **1 ball**

Contrast C Little Red Wagon (74024) **1 ball**

Size U.S. I/9 (5.5 mm) Susan Bates® Silvalume® crochet hook **or size needed to obtain gauge.** Susan Bates® yarn needle.

MEASUREMENT

Approx 26" [66 cm] square.

GAUGE

14 sts and 12 rows = 4" [10 cm] in pat.

INSTRUCTIONS

Notes:

- Ch 3 at beg of row counts as dc.
- When not in use, MC is carried along edge of work. A, B, and C are cut at the end of each row.

Stripe Pat

With MC, work 6 rows.

With A, work 1 row.

With B, work 1 row.

With MC, work 6 rows.

With A, work 1 row.

With C, work 1 row.

These 16 rows form Stripe Pat.

With MC, ch 111. (Pattern rep is 18 plus 3.)

1st row: 1 dc in 4th ch from hook (counts as 2 dc). *1 hdc in each of next 6 ch. (Hdc2tog) twice. 1 hdc in each of next 6 ch. 2 dc in each of next 2 ch. Rep from * to end of row, ending final rep with 2 dc in last ch. Turn.

2nd row: Ch 3. 1 dc in first st of row. *1 hdc in each of next 6 sts. (Hdc2tog) twice. 1 hdc in each of next 6 sts. 2 dc in each of next 2 sts. Rep from * to end of row, ending final rep with 2 dc in last st (top of turning ch-3.) Turn. First 2 rows of Stripe Pat are now in place.

3rd to 7th rows: As 2nd row.

8th row: Ch 3. 1 dc in first st. *1 hdccl in each of next 6 sts. (Hdc2tog) twice. 1 hdccl in each of next 6 sts. 2 dc in each of next 2 sts. Rep from * to end of row, ending final rep with 2 dc in last st (top of turning ch-3).

Keeping cont of Stripe Pat, rep 2nd to 8th rows for Ripple Pat until work from beg measures approx. 26" [66 cm], ending after a 6th row of Ripple Pat. Fasten off.


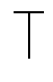



Border

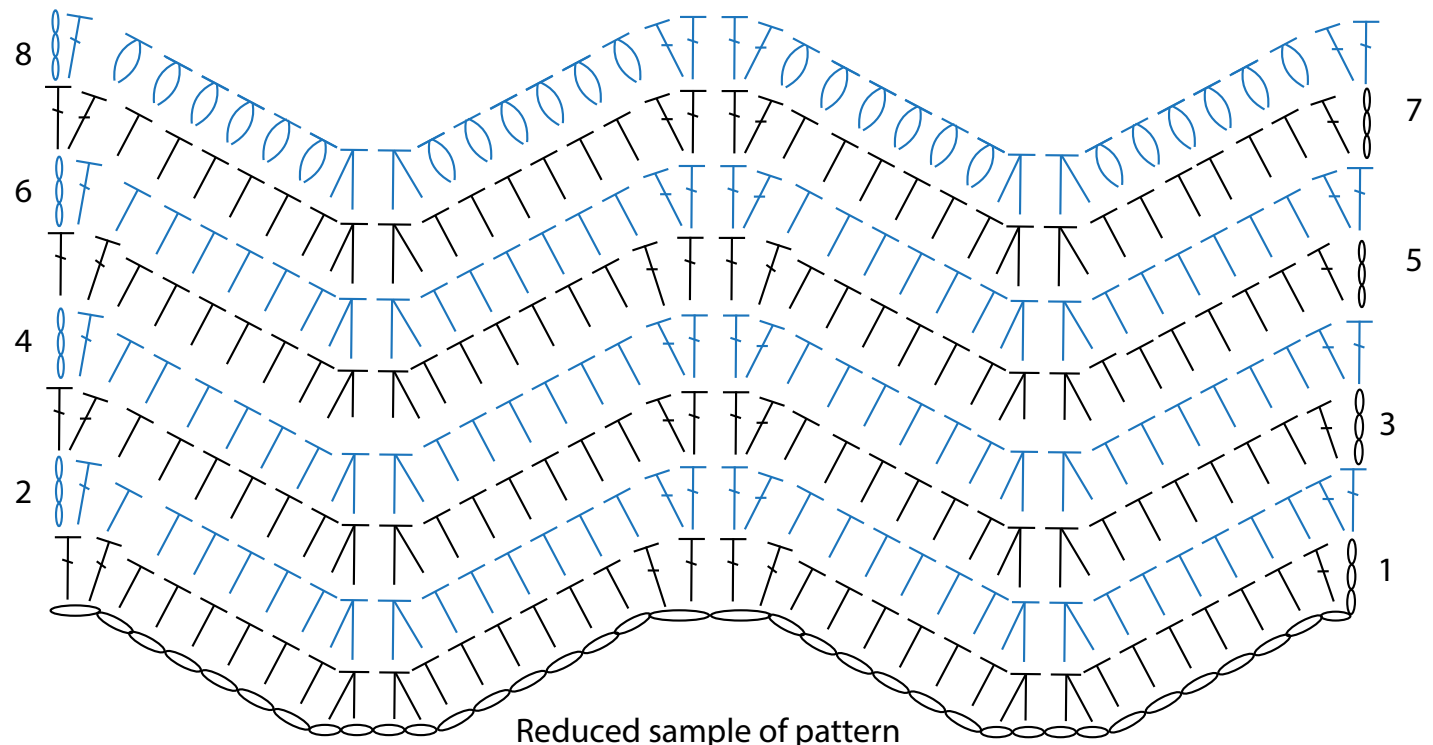
Join MC with sl st to any corner st. Work 2 rnds evenly in sc around Blanket, working 3 sc in each corner. Join with sl st to first sc at end of rnd. Fasten off.

YouTube video:

<https://youtu.be/95yxRWpojxc>

Key

-  = Chain (ch)
-  = Half double crochet (hdc)
-  = Half double crochet two together (hdc2tog)
-  = Half double crochet cluster (hdccl)
-  = Double crochet (dc)



Reduced sample of pattern