



CROCHET | SKILL LEVEL: INTERMEDIATE

ABBREVIATIONS

Approx =	Dec = Decrease	RS = Right side
Approximately	Hdc = Half double crochet	Sl st = Slip stitch
Beg = Begin(ning)	Rem = Remaining	Sp(s) = Space(s)
Ch = Chain(s)	Rep = Repeat	St(s) = Stitch(es)
Cont = Continuity	Rnd(s) = Round(s)	Yoh = Yarn over hook
Dc = Double crochet		

MEASUREMENTS

Approx 44 x 53" [112 x 134.5 cm].

GAUGE

7 dc and 4 rows = 4" [10 cm].

INSTRUCTIONS

Note:

- Blanket is worked diagonally from corner to corner.
- When working from chart, use separate colors for each area of color in the design.
- Start new colors at appropriate points.
- To change color, work to last 2 loops on hook, yoh with new color. Pull through 2 loops on hook to complete st and proceed in new color.

BLANKET

See diagram and Chart on page 2. With A, ch 6.

1st row: (RS). 1 dc in 4th ch from hook (counts as 2 dc). 1 dc in each of last 2 ch. Turn. 1 block made.

2nd row: Ch 6. 1 dc in 4th ch from hook. 1 dc in each of next 2 ch - beg block made. (Sl st. Ch 3. 3 dc) in next ch-3 sp - block made. Turn. 2 blocks.

3rd row: Beg block. *Block in next ch-3 sp. Rep from * to end of row. Turn. 3 blocks.

Keeping cont of color changes in Chart (each square on grid represents 1 block), rep last row until 33rd row of chart is complete. 33 blocks.

MATERIALS

Bernat® Blanket™ (10.5 oz/300 g; 220 yds/201 m)

Contrast A Orchid (11017) **2 balls**

Contrast B Morning Blush (11016) **2 balls**

Contrast C Lilac (11015) **2 balls**

Contrast D Orange Leaf (10907) **2 balls**

Size U.S. L/11 (8 mm) crochet hook **or size needed to obtain gauge.**
Yarn needle.

Keeping cont of Chart, proceed as follows to work sides even:

34th row: Beg block. *Block in next ch-3 sp. Rep from * to last ch-3 sp. Sl st in last ch-3 sp. (**Do not** make a block). 33 blocks. Turn.

36th to 40th rows: Rep last 2 rows twice more.

35th row: Sl st in each of first 3 dc. *Block in next ch-3 sp. Rep from * to end of row. Turn. 33 blocks.

Keeping cont of Chart, proceed as follows to dec corner:

41st row: Sl st in each of first 3 dc. *Block in next ch-3 sp. Rep from * to last ch-3 sp. Sl st in last ch-3 sp. (**Do not** make a block). 32 blocks. Turn.

Rep last row until 1 block rem. (71 rows of chart are complete). Fasten off.

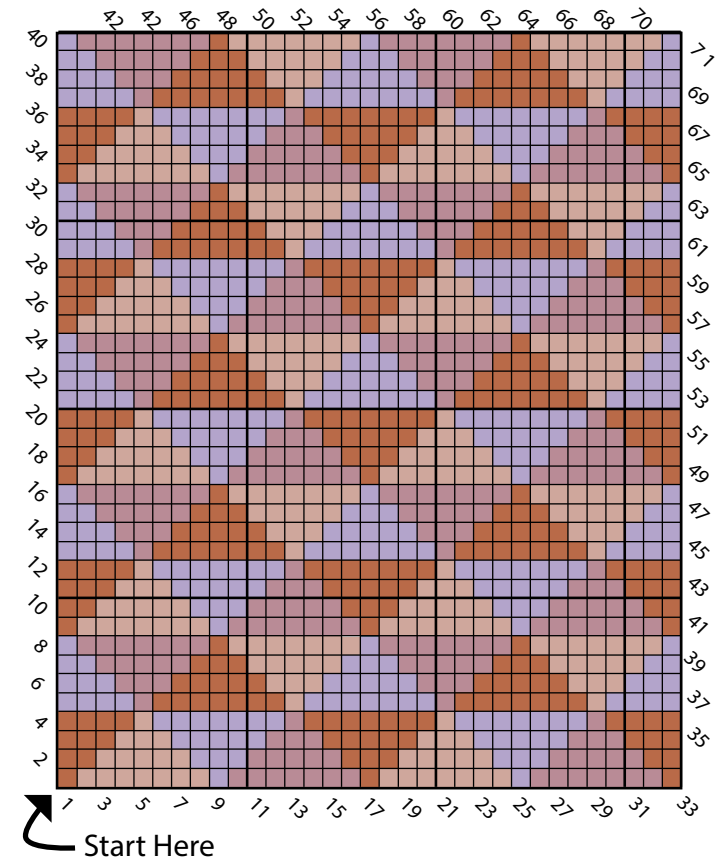
Edging: With RS facing, join D with sl st between any 2 blocks along edge.

1st rnd: Ch 3. *Sl st between next 2 blocks. Ch 3. Rep from * around working (Sl st. Ch 3. Sl st) in each corner. Join with sl st in first sl st. Turn.

2nd rnd: Sl st in next ch-3 sp. Ch 2 (counts as hdc). 2 hdc in same sp as last sl st. *3 hdc in next ch-3 sp. Rep from * around, working (3 hdc. Ch 1. 3 hdc) in corner ch-3 sp. Join with sl st to top of ch-2. Fasten off.

Key

- = Contrast A
- = Contrast B
- = Contrast C
- = Contrast D



- STITCH KEY
- = chain (ch)
 - = slip stitch (sl st)
 - = double crochet (dc)

