



**MATERIALS**

**Bernat® Blanket™** (10.5 oz/300 g; 220 yds/201 m)

<b>Contrast A</b> Taupe (10029)	<b>4 balls or 670 yds/613 m</b>
<b>Contrast B</b> Almond (10830)	<b>3 balls or 580 yds/530 m</b>

Size U.S. L/11 (8 mm) Susan Bates® Silvalume™ crochet hook **or size needed to obtain gauge.**



CROCHET | SKILL LEVEL: **EASY**

## ABBREVIATIONS

<b>Approx</b> = Approximate(ly)	<b>Cont</b> = Continue	<b>RS</b> = Right side
<b>Beg</b> = Begin(ning)	<b>Dc</b> = Double crochet	<b>Sc</b> = Single crochet
<b>Ch</b> = Chain(s)	<b>Pat</b> = Pattern	
	<b>Rep</b> = Repeat	

## MEASUREMENTS

Approx 55 x 60" [139.5 x 152.5 cm].

## GAUGE

7 sc and 8 rows = 4" [10 cm].

## INSTRUCTIONS

### Notes: -

- Ch 3 at beg of rows counts as dc.
- To change color, work to last 2 loops on hook and draw new color through last 2 loops, then proceed in new color.
- Carry color not in use loosely up side edge of work.

With A, ch 101. See diagram on page 2.

**1st row:** (RS). 1 sc in 2nd ch from hook. 1 sc in each of next 3 ch. \*1 dc in each of next 4 ch. 1 sc in each of next 4 ch. Rep from \* to end of ch. Turn.

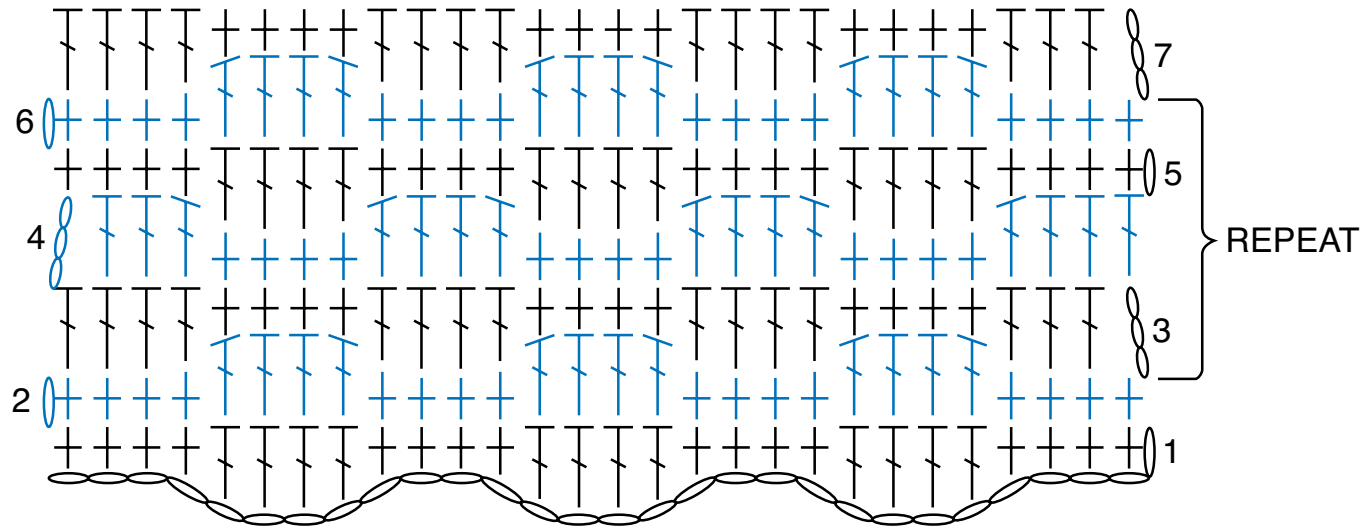
**2nd row:** Ch 1. \*1 sc in each of next 4 sc. 1 dc in each of next 4 dc. Rep from \* to last 4 sc. 1 sc in each of next 4 sc. Join B. Turn.

**3rd row:** With B, ch 3 (counts as dc). 1 dc in each of next 3 sts. \*1 sc in each of next 4 sts. 1 dc in each of next 4 sts. Rep from \* to end of row. Turn.

**4th row:** As 3rd row. Join A.

**5th row:** With A, ch 1. 1 sc in each of first 4 sts. \*1 dc in each of next 4 sts. Rep from \* to end of row. Turn.

**6th row:** As 5th row. Join B. Rep 3rd to 6th rows to form pat. Cont in pat, working 2 rows each in A and B until work from beg measures approx 60" [152.5 cm], ending on a 6th row of pat. Fasten off.



REDUCED SAMPLE OF PATTERN

STITCH KEY

○ = chain (ch)

⊥ = single crochet (sc)

⊥ = double crochet (dc)