



CROCHET | SKILL LEVEL: **INTERMEDIATE**

## ABBREVIATIONS

<b>Approx</b> =	<b>Mosaic Dc</b> = Working	<b>RS</b> = Right side
Approximately	in front of chain	<b>Sc</b> = Single crochet
<b>Beg</b> = Begin(ning)	spaces, work 1 dc in	<b>Sl st</b> = Slip stitch
<b>Ch</b> = Chain(s)	skipped sc 3 rows	<b>Sp(s)</b> = Space(s)
<b>Cont</b> = Continue	below	<b>St(s)</b> = Stitch(es)
<b>Dc</b> = Double crochet	<b>Pat</b> = Pattern	<b>WS</b> = Wrong side
	<b>Rep</b> = Repeat	

## MEASUREMENTS

Approx 56" x 60" [142 x 152.5 cm].

## GAUGE

7 sc and 8 rows = 4" [10 cm].

## INSTRUCTIONS

### Notes:

- Each skipped sc has ch-2 worked above it for 2 rows. This establishes the 'gap' where Mosaic Dc will later be worked.
- Ch-2 sp over skipped sts counts as one stitch.
- Mosaic Dc always replaces sc directly behind it on working row.

- WS of your work maintains alternating 2-row striped pattern because you are working in front of chain-spaces each time you work Mosaic Dc - you are never working around chain-spaces. The chain-spaces are positioned behind Mosaic Dc.
- Carry color when not in use loosely up side of work.

## BLANKET

With A, ch 100.

**1st setup row:** (RS). 1 sc in 2nd ch from hook. 1 sc in each ch to end of chain. Turn. 99 sc.

**2nd setup row:** Ch 1. 1 sc in each sc to end of row. Turn.

## MATERIALS

**Bernat® Blanket Ombré™** (10.5 oz/300 g; 220 yds/201 m)

**Contrast A** Eggplant Ombré (10006) **4 balls or 870 yds/795 m**

**Bernat® Blanket™** (10.5 oz/300 g; 220 yds/201 m)

**Contrast B** Vintage White (10006) **4 balls or 763 yds/698 m**

Size U.S. L/11 [8 mm] Susan Bates® Silvalume® crochet hook **or size needed to obtain gauge.** Susan Bates® yarn needle.

**Note:** See diagram on page 4.

**1st row:** (RS). With B, ch 1. 1 sc in each of first 5 sc. \*Ch 2. Skip next sc. 1 sc in each of next 3 sc. Ch 2. Skip next sc. 1 sc in each of next 7 sc. Rep from \* to last 10 sts. Ch 2. Skip next sc. 1 sc in each of next 3 sc. Ch 2. Skip next sc. 1 sc in each of next 5 sc. Turn.

**2nd row:** (WS). Ch 1. 1 sc in each of first 5 sc. Ch 2. Skip next ch-2 sp. 1 sc in each of next 3 sc. Ch 2. Skip next ch-2 sp. \*1 sc in each of next 7 sc. Ch 2. Skip next ch-2 sp. 1 sc in each of next 3 sc. Ch 2. Skip next ch-2 sp. Rep from \* to last 5 sts. 1 sc in each of last 5 sts. Turn.

**3rd row:** With A, ch 1. 1 sc in each of next 5 sts. \*Mosaic Dc in next skipped sc 3 rows below. Ch 2. Skip next sc. 1 sc in next st. Ch 2. Skip next sc. Mosaic Dc in next skipped sc 3 rows below. 1 sc in each of next 7 sts. Rep from \* to end of row, ending final rep with 1 sc in each of last 5 sts. Turn.

**4th row:** Ch 1. 1 sc in each of first 6 sts. \*Ch 2. Skip next ch-2 sp. 1 sc in next sc. Ch 2. Skip next ch-2 sp. 1 sc in each of next 9 sts. Rep from \* to end of row, ending final rep with 1 sc in each of last 6 sts. Turn.

**5th row:** With B, ch 1. 1 sc in each of first 3 sts. \*Ch 2. Skip next st. 1 sc in each of next 2 sts. Mosaic Dc in next skipped sc 3 rows below. Ch 2. Skip next st. Mosaic Dc in next skipped sc 3 rows below. 1 sc in each of next 2 sc. Ch 2. Skip next sc. 1 sc in each of next 3 sts. Rep from \* to end of row. Turn.

**6th row:** Ch 1. 1 sc in each of first 3 sts. \*Ch 2. Skip next ch-2 sp. 1 sc in each of next 3 sts. Rep from \* to end of row. Turn.

**7th row:** With A, ch 1. 1 sc in each of first 3 sc. \*1 Mosaic Dc in next skipped sc 3 rows below. Ch 2. Skip next sc. 1 sc in each of next 2 sc. 1 Mosaic Dc in next skipped sc 3 rows below. 1 sc in each of next 2 sc. Ch 2. Skip next sc. 1 Mosaic Dc in next skipped sc 3 rows below. 1 sc in each of next 3 sc. Rep from \* to end of row. Turn.

**8th row:** Ch 1. 1 sc in each of first 4 sts. \*Ch 2. Skip next ch-2 sp. 1 sc in each of next 5 sts. Rep from \* to last 5 sts. Ch 2. Skip next ch-2 sp. 1 sc in each of last 4 sts. Turn.

**9th row:** With B, ch 1. 1 sc in first sc. \*Ch 2. Skip next sc. 1 sc in each of next 2 sc. 1 Mosaic Dc in next skipped sc 3 rows below. Ch 4. Skip next 2 sc. 1 sc in next sc. Ch 4. Skip next 2 sc. 1 Mosaic Dc in next skipped sc 3 rows below. 1 sc in each of next 2 sc. Rep from \* to last 2 sts. Ch 2. Skip next sc. 1 sc in last sc. Turn.

**10th row:** Ch 1. 1 sc in first sc. Ch 2. Skip next ch-2 sp. \*1 sc in each of next 3 sts. Ch 4. Skip next ch-4 sp. 1 sc in next sc. Ch 4. Skip next ch-4 sp. 1 sc in each of next 3 sts. Ch 2. Skip next ch-2 sp. Rep from \* to last sc. 1 sc in last sc. Turn.

**11th row:** With A, ch 1. 1 sc in first sc. \*1 Mosaic Dc in next skipped sc 3 rows below. Ch 2. Skip next sc. 1 sc in each of next 2 sc. (1 Mosaic Dc in next skipped sc 3 rows below) twice. 1 sc in next sc. (1 Mosaic Dc in next skipped sc 3 rows below) twice. 1 sc in each of next 2 sc. Ch 2. Skip next sc. Rep from \* to last 2 sts. 1 Mosaic Dc in next skipped sc 3 rows below. 1 sc in next sc. Turn.

**12th row:** Ch 1. 1 sc in each of first 2 sts. \*Ch 2. Skip next ch-2 sp. 1 sc in each of next 9 sc. Ch 2. Skip next ch-2 sp. 1 sc in next st. Rep from \* to last st. 1 sc in last st. Turn.

**13th row:** With B, ch 1. 1 sc in first sc. \*Ch 2. Skip next sc. 1 Mosaic Dc in next skipped sc 3 rows below. 1 sc in each of next 2 sc. Ch 4. Skip next 2 sc. 1 sc in next sc. Ch 4. Skip next 2 sc. 1 sc in each of next 2 sc. 1 Mosaic Dc in next skipped sc 3 rows below. Rep from \* to last 2 sts. Ch 2. Skip next sc. 1 sc in last sc. Turn.

**14th row:** As 10th row.

**15th row:** With A, ch 1. 1 sc in first sc. \*1 Mosaic Dc in next skipped sc 3 rows below. 1 sc in each of next 2 sc. Ch 2. Skip next sc. (1 Mosaic Dc in next skipped sc 3 rows below) twice. 1 sc in next sc. (1 Mosaic Dc in next skipped sc 3 rows below) twice. Ch 2. Skip next sc. 1 sc in each of next 2 sts. Rep from \* to last 2 sts. 1 Mosaic Dc in next skipped sc 3 rows below. 1 sc in last st. Turn.

**16th row:** As 8th row.

**17th row:** With B, ch 1. 1 sc in each of first 3 sc. \*Ch 2. Skip next sc. 1 Mosaic Dc in next skipped sc 3 rows below. 1 sc in each of next 2 sc. Ch 2. Skip next sc. 1 sc in each of next 2 sc. 1 Mosaic Dc in next skipped next 3 rows below. Ch 2. Skip next sc. 1 sc in each of last 3 sc. Rep from \* to end of row. Turn.

**18th row:** As 6th row.

**19th row:** With A, ch 1. 1 sc in each of first 3 sc. \*1 Mosaic Dc in next skipped sc 3 rows below. 1 sc in each of next 2 sc. Ch 2. Skip next sc. 1 Mosaic Dc in next skipped sc 3 rows below. Ch 2. Skip next sc. 1 sc in each of next 2 sc. 1 Mosaic Dc in next skipped sc 3 rows below. 1 sc in each of next 3 sc. Rep from \* to end of row. Turn.

**20th row:** Ch 1. 1 sc in each of first 6 sts. Ch 2. Skip next ch-2 sp. 1 sc in next sc. Ch 2. Skip next ch-2 sp. \*1 sc in each of next 9 sts. Ch 2. Skip next ch-2 sp. 1 sc in next sc. Ch 2. Skip next ch-2 sp. Rep from \* to last 6 sts. 1 sc in each of last 6 sts. Turn.

**21st row:** Ch 1. 1 sc in each of next 5 sts. \*Ch 2. Skip next st. 1 Mosaic Dc in next skipped sc 3 rows below. 1 sc in next st. 1 Mosaic Dc in next skipped sc 3 rows below. Ch 2. Skip next st. 1 sc in each of next 7 sts. Rep from \* to last 10 sts. Ch 2. Skip next st. 1 Mosaic Dc in next skipped sc 3 rows below. 1 sc in next st. 1 Mosaic Dc in next skipped sc 3 rows below. Ch 2. Skip next st. 1 sc in each of last 5 sts. Turn.

**22nd row:** With B, Ch 1. 1 sc in first of next 5 sts. \*Ch 2. Skip next ch-2 sp. 1 sc in each of next 3 sts. Ch 2. Skip next ch-2 sp. 1 sc in each of next 7 sts. Rep from \* to last 10 sts. Ch 2. Skip next ch-2 sp. 1 sc in each of next 3 sts. Ch 2. Skip next ch-2 sp. 1 sc in each of last 5 sts. Turn.

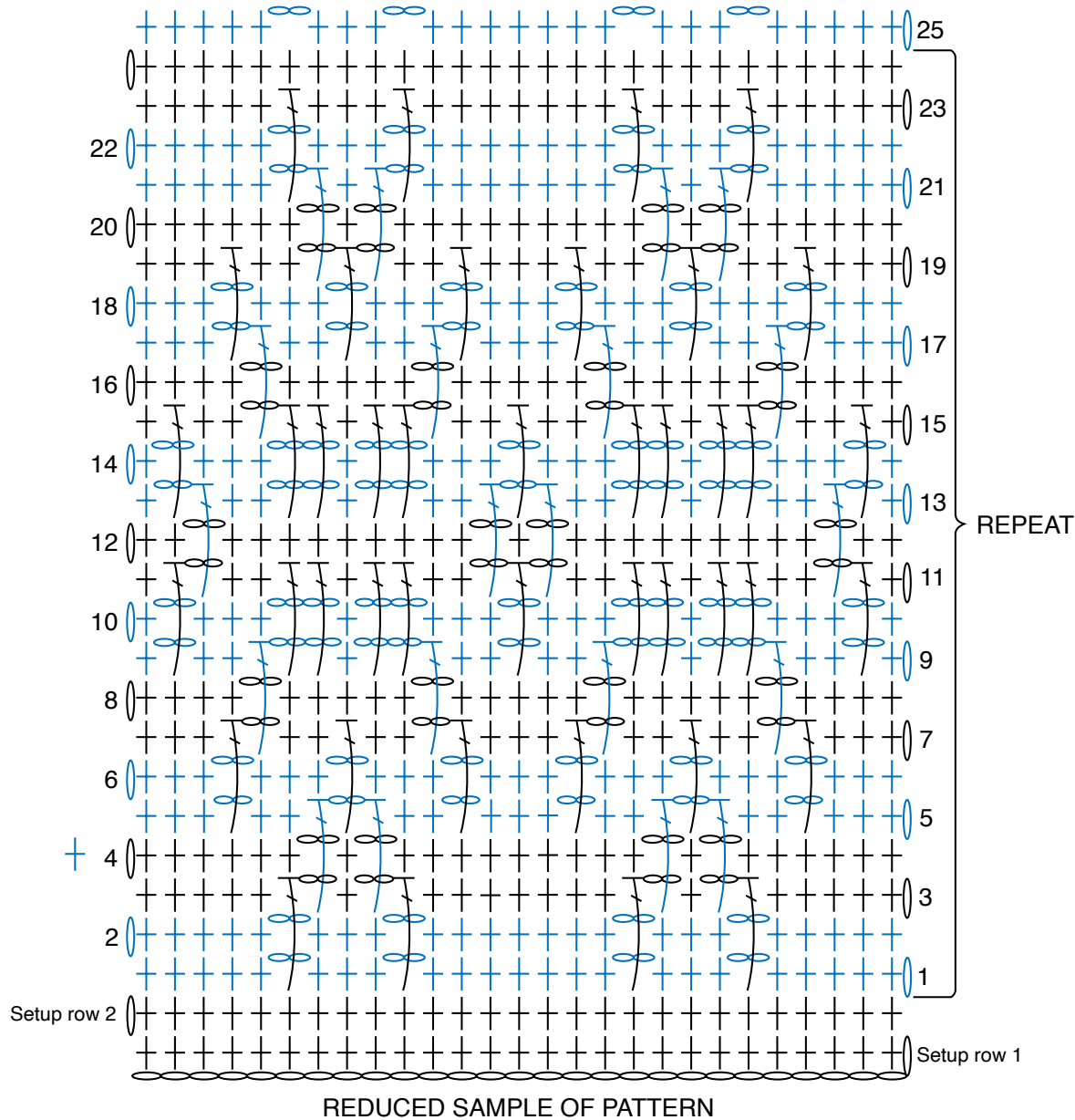
**23rd row:** With A, ch 1. 1 sc in each of first 5 sc. 1 Mosaic Dc in next skipped sc 3 rows below. 1 sc in each of next 3 sc. 1 Mosaic Dc in next skipped sc 3 rows below. \*1 sc in each of next 7 sc. 1 Mosaic Dc in next skipped sc 3 rows below. 1 sc in each of next 3 sc. 1 Mosaic Dc in next skipped sc 3 rows below. Rep from \* to last 5 sts. 1 sc in each of last 5 sc. Turn.

**24th row:** Ch 1. 1 sc in each st to end of row. Turn.

Rep these 24 rows for Mosaic Pat until work from beg measures approx. 60" [152.5 cm], ending after a 24th row. Fasten off.

**First Side Edging:** (RS). Join A with sl st to lower right corner to work across side edge of Blanket. Ch 1. Work sc evenly up side edge of Blanket, working around side of sts and at same time working around yarn carried up side of work to enclose it. Fasten off.

**Second Side Edging:** (RS). Join A with sl st to upper left corner of Blanket and work as for First Side Edging down opposite side.



**STITCH KEY**

- = chain (ch)
- † = single crochet (sc)
- ⌋ = Mosaic double crochet (Mosaic Dc)