



CROCHET | SKILL LEVEL: **INTERMEDIATE**

ABBREVIATIONS

Approx =	Pat = Pattern	Sl st = Slip stitch
Approximately	Rep = Repeat	Sp(s) = Space(s)
Beg = Begin(ning)	Rnd = Round	St(s) = Stitch(es)
Ch = Chain(s)	RS = Right side	WS = Wrong side
Dc = Double crochet	Sc = Single crochet	

MEASUREMENTS

Approx 48" x 58" [122 x 147.5 cm].

GAUGES

7.5 sc and 8.75 rows = 4" [10 cm].
9.25 sts and 8.75 rows = 4" [10 cm]
in Herringbone Pat.

INSTRUCTIONS

Notes:

- Worked over foundation ch multiple of 6 ch + 8.
- **Do not** work around sts or chains from previous row(s) when working into sts 2 or 3 rows below.

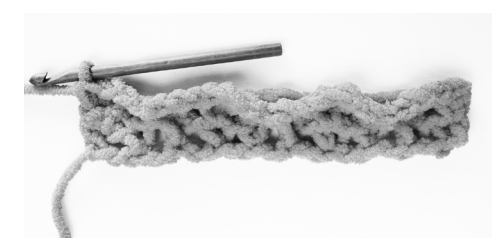
Ch 110. See diagram on page 2.

1st row: (RS). 1 sc in 2nd ch from hook. *Ch 1. Skip next ch. 1 sc in next ch. Rep from * to end of chain. Turn. 109 sts (55 sc).

2nd row: Ch 1. 1 sc in first sc. *Ch 1. Skip next ch-1 sp. 1 sc in next sc. Rep from * to end of row. Turn.



3rd row: Ch 1. 1 sc in first sc. *Ch 3. Skip all of next: (Ch-1 sp. 1 sc). Sl st in next ch-1 sp 2 rows below (1st row). Ch 3. Skip all of next: (1 sc. Ch-1 sp). 1 sc in next sc. Rep from * to end of row. Turn.



MATERIALS

Bernat® Forever Fleece™ (9.9 oz/280 g; 194 yds/177 m)

Beech (61046)

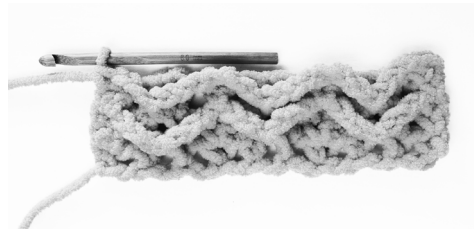
9 balls

Size U.S. P/15 (10 mm) crochet hook **or size needed to obtain gauge.**
Yarn needle.

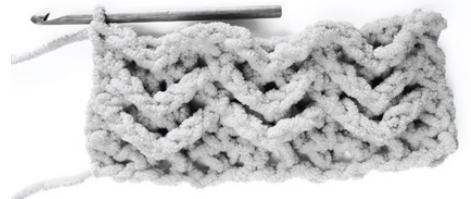
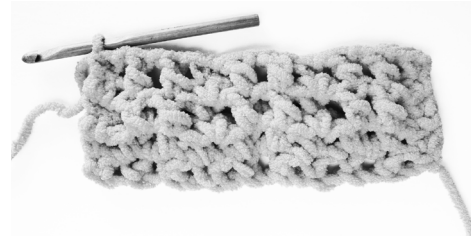
4th row: Ch 1. 1 sc in first sc. * [(Ch 1. 1 dc in next skipped sc 2 rows below (2nd row))] twice. Ch 1. 1 sc in next sc. Rep from * to end of row. Turn.



5th row: Ch 1. 1 sc in first sc. *Ch 3. Skip all of next (Ch-1 sp. 1 dc). Sl st in next ch-1 sp 3 rows below (2nd row). Ch 3. Skip all of next (1 dc. Ch-1 sp). 1 sc in next sc. Rep from * to end of row. Turn.



6th row: Ch 1. 1 sc in first sc. * [(Ch 1. 1 dc in next skipped dc 2 rows below)] twice. Ch 1. 1 sc in next sc. Rep from * to end of row. Turn.

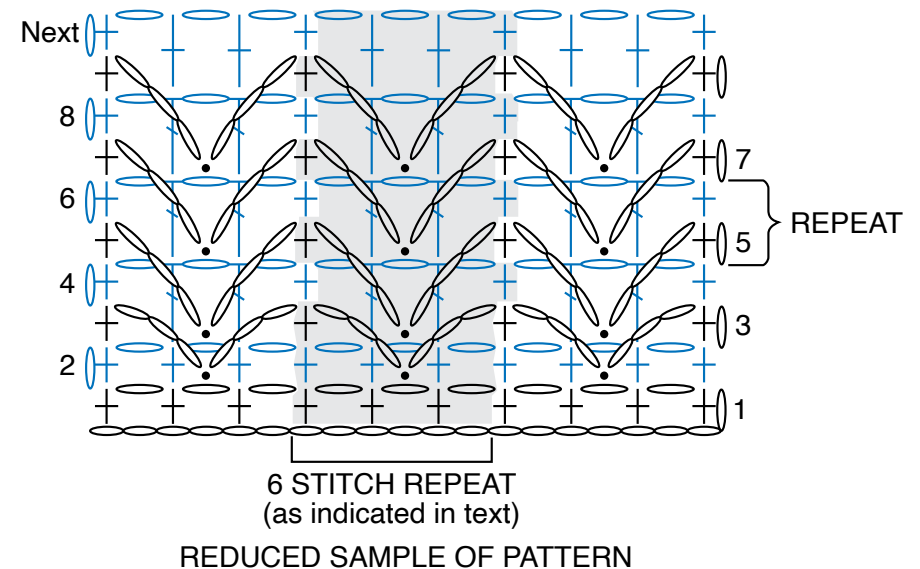


Rep last 2 rows for Herringbone Pat until work from beg measures 56½" [143.5 cm], ending on a RS row.

Final row: (WS). Ch 1. 1 sc in first sc. *(Ch 1. 1 dc in next skipped dc 2 rows below) twice. Ch 1. 1 sc in next sc. Rep from * to end of row.

Do not fasten off. Work edging as follows:

Blanket Edging: 1st rnd: (RS). Ch 1. Work 1 rnd of sc evenly around outer edge of Blanket, having 3 sc in each corner. Join with sl st to first sc. Fasten off.



STITCH KEY

- = chain (ch)
- = slip stitch (sl st)
- ⊥ = single crochet (sc)
- ⌋ = double crochet (dc)