



CROCHET | SKILL LEVEL: **INTERMEDIATE**

ABBREVIATIONS

Approx = Approximately
Beg = Beginning
Ch = Chain(s)
Hdc = Half double crochet
Pat = Pattern
Rem = Remaining
Rep = Repeat
RS = Right side

Sc = Single crochet
Sl st = Slip stitch
Sp(s) = Space(s)
St(s) = Stitch(es)
Tog = Together
WS = Wrong side
Yoh = Yarn over hook

MEASUREMENTS

Approx 49" x 67" [124.5 x 170.5 cm].

GAUGES

8 hdc and 6 rows = 4" [10 cm].
 8 sc and 9 rows = 4" [10 cm].
 2 ch-7 lattices and 9 rows = 4" [10 cm] in pattern.

INSTRUCTIONS

Notes:

- Blanket is reversible.
- Two rows are worked in the same direction before turning creating layers.
- Ch 2 at beg of row **does not** count as hdc.
- Ch 1 at beg of row **does not** count as sc.
- To change color, work to last 2 loops on hook and draw new color through last 2 loops, then proceed in new color.
- **Do not** break colors at end of rows.

MATERIALS

Bernat® Forever Fleece™ (9.9 oz/280 g; 194 yds/177 m)

Contrast A White Noise (61004) **3 balls**

Contrast B Bergamot (61009) **3 balls**

Size U.S. M/13 [9 mm] Susan Bates® Silvalume™ crochet hook **or size needed to obtain gauge.** Susan Bates® Steel Yarn Needle.

BLANKET

With A, ch 100 (multiple of 5 ch + 10).

1st row: (RS). 1 hdc in 3rd ch from hook. 1 hdc in each ch to end of chain. Turn. 98 hdc.



2nd row: (WS). Ch 1. 1 sc in each of first 4 hdc. (Ch 7. Skip next 4 hdc. 1 sc in next hdc) 18 times. 1 sc in each of last 4 hdc. **Do not** turn. Pull long loop. Remove hook.



3rd row: (WS). Join B with sl st to first sc. Ch 1. 1 sc in each of first 4 sc. Ch 3. *Working in front of A*, 1 sc in 7th hdc of 1st row. (Ch 7. Skip next 4 hdc of 1st row. 1 sc in next hdc) 17 times. Ch 3. 1 sc in each of last 4 sc. Change to A by pulling through last 2 loops of last st. Turn.



Proceed in pat as follows:
See Diagram on page 4.

1st row: (RS). With A, ch 1. 1 sc in each of first 4 sc. *Working in front of B*, ch 3. 1 sc in next ch-7 sp of last A row. (Ch 7. 1 sc in next ch-7 sp of last A row) 17 times. Ch 3. 1 sc in each of last 4 sc. **Do not** turn. Pull long loop. Remove hook.



2nd row: (RS). Insert hook in first sc. Pull up loop of B. Ch 1. 1 sc in each of first 4 sc. *Working in front of last A row*, (Ch 7. 1 sc in next ch-7 sp of last B row) 17 times. Ch 7. 1 sc in each of last 4 sc. Change to A, by pulling through last 2 loops of last st. Turn.



3rd row: (WS). With A, ch 1. 1 sc in each of first 4 sc. *Working in front of last B row*, (Ch 7. 1 sc in next ch-7 sp of last B row) 17 times. Ch 7. 1 sc in each of last 4 sc. **Do not** turn. Pull long loop. Remove hook.



4th row: (WS). Insert hook in first sc. Pull up loop of B. Ch 1. 1 sc in each of first 4 sc. *Working in front of A*, ch 3. 1 sc in next ch-7 sp of last A row. (Ch 7. 1 sc in next ch-7 sp of last A row) 17 times. Ch 3. 1 sc in each of last 4 sc. Change to A by pulling through last 2 loops of last st. Turn.



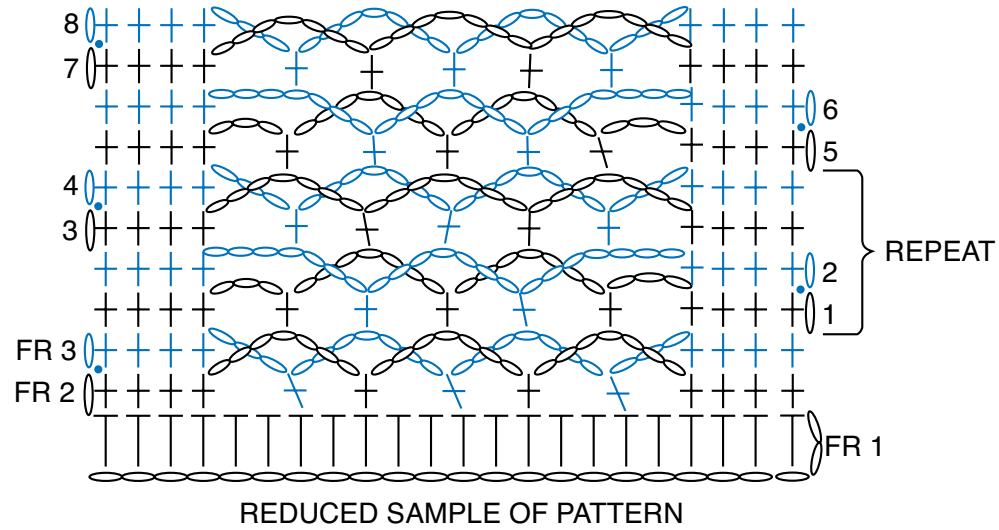
Rep 1st to 4th rows for pat until work from beg measures approx 66" [167.5 cm] long, ending on a 4th row and omitting changing to A. Fasten off A.

Next row: (RS). With B, ch 2. 1 hdc in each of first 4 sc. 3 hdc in ch-3 sp. Skip next sc. (5 hdc in next ch-7 sp. Skip next sc) 17 times. 2 hdc in next ch-3 sp. 1 hdc in each of next 4 sc. Fasten off. 98 hdc.



Border: With RS facing, join A with sl st in top right corner of Blanket. Ch 1. Work 98 sc evenly across top of Blanket. 3 sc in corner. Work sc evenly down left side of Blanket. 3 sc in corner. Work 97 sc evenly across bottom of Blanket. 3 sc in corner. Work sc evenly up right side of Blanket. 3 sc in corner. Join with sl st to first sc. Fasten off.





STITCH KEY

- = chain (ch)
- = slip stitch (sl st)
- ⊥ = single crochet (sc)
- ┤ = half double crochet (hdc)