



MATERIALS

Bernat® Blanket™ (10.5 oz/300 g; 220 yds/201 m)

Contrast A Vintage White (10006) **4 balls or 803 yds/734 m**

Bernat® Blanket Brights™ (10.5 oz/300 g; 220 yds/201 m)

Contrast B Royal Blue (12006) **3 balls or 643 yds/588 m**

Size U.S. L/11 (8 mm) crochet hook **or size needed to obtain gauge.**



CROCHET | SKILL LEVEL: **INTERMEDIATE**

ABBREVIATIONS

Approx =	Dc = Double crochet	Sl st(s) = Slip stitch(es)
Approximately	Dec = Decrease	Sp(s) = Space(s)
Beg = Beginning	Rem = Remain(ing)	WS = Wrong side
Ch = Chain(s)	Rep = Repeat	Yoh = Yarn over hook
Cont = Continue(ity)	RS = Right side	

MEASUREMENTS

Approx 51" x 59" [129.5 x 150 cm].

GAUGE

7 dc and 4 rows = 4" [10 cm].

INSTRUCTIONS

Note:

- Blanket is worked diagonally from corner to corner.
- When working from chart, wind small balls of the colors to be used, one for each separate area of color in the design. Start new colors at appropriate points.
- To change color, work to last loops on hook of previous color. Yoh with new color, draw through rem loops and proceed with new color.

BLANKET

With A, ch 6. See Chart on page 2 and diagram on page 2. Each square of chart represents 1 block.

1st row: (RS). 1 dc in 4th ch from hook (counts as 2 dc). 1 dc in each of last 2 ch. Turn. 1 block made.

2nd row: Ch 6. 1 dc in 4th ch from hook. 1 dc in each of next 2 ch – beg block made. (Sl st. Ch 3. 3 dc) in next ch-3 sp – block made. Turn. 2 blocks.

3rd row: Beg block. *Block in next ch-3 sp. Rep from * to end of row. Turn. 3 blocks.

First 3 rows of Chart complete. Keeping cont of color changes in Chart (each square on grid represents 1 block), rep last row until 37th row of chart is complete. 37 blocks.

Keeping cont of Chart, proceed as follows to work sides even:

38th row: Beg block. *Block in next ch-3 sp. Rep from * to last ch-3 sp. Sl st in last ch-3 sp. **(Do not make a block.)** Turn.

39th row: Sl st in each of first 3 dc. *Block in next ch-3 sp. Rep from * to end of row. Turn.

40th and 41st rows: Rep last 2 rows once more.

Keeping cont of Chart, proceed as follows to dec corner:

42nd row: Sl st in each of first 3 dc. *Block in next ch-3 sp. Rep from * to last ch-3 sp. Sl st in last ch-3 sp. **(Do not make a block.)** Turn.

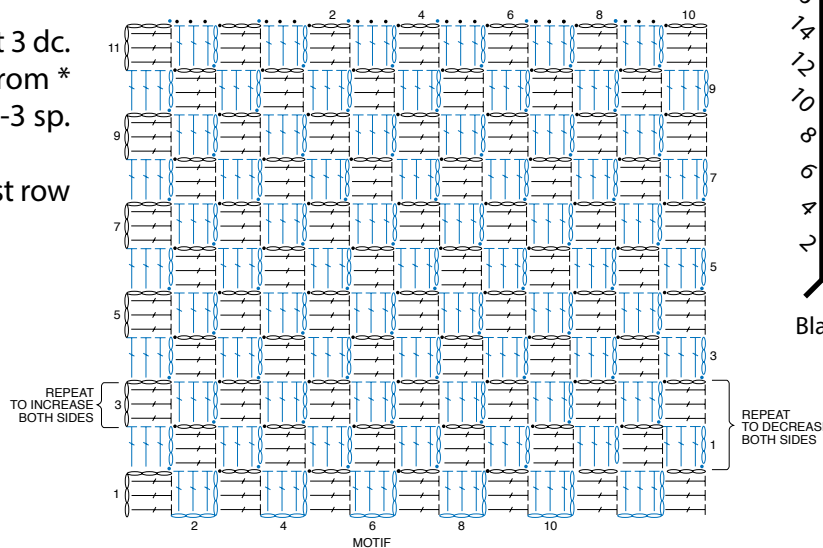
Keeping cont of Chart, rep last row until 1 block rem. Fasten off.

Bottom Edging: With WS facing, join B with sl st at bottom corner to work across bottom edge.

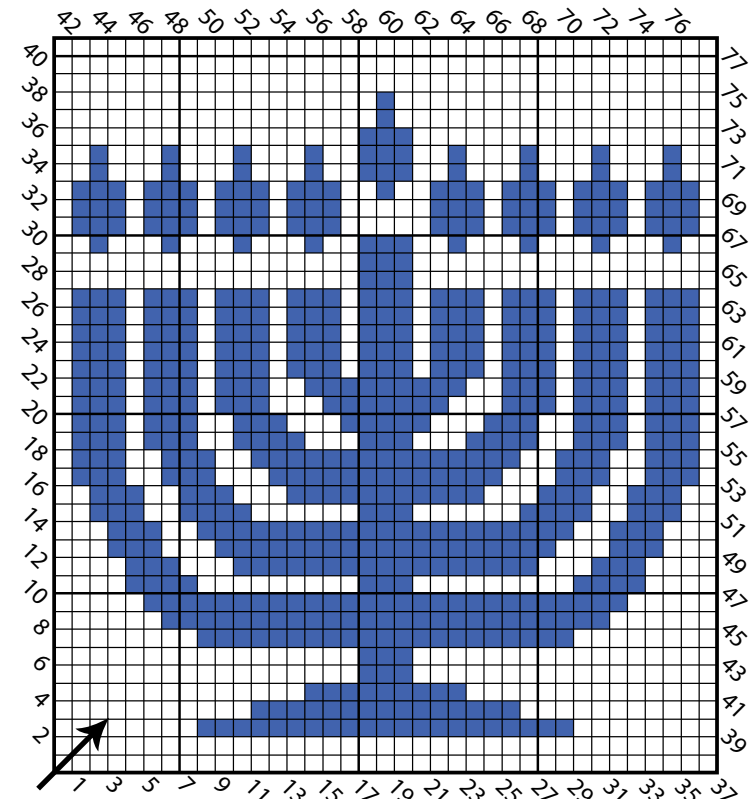
1st row: (WS). *Ch 3. Sl st between next 2 blocks. Rep from * to last block of edge. Ch 3. Sl st in corner. Turn.

2nd row: Ch 3 (counts as dc). *3 dc in next ch-3 sp. Rep from * to end of row. 1 dc in corner. Fasten off.

Top Edging: Rep Bottom Edging across top edge.



STITCH KEY
 ○ = chain (ch)
 ● = slip stitch (sl st)
 ┆ = double crochet (dc)



Blanket is worked diagonally - corner to corner

□ = Contrast A
 ■ = Contrast B