



MATERIALS

Bernat® Blanket Extra Thick™ (21.2 oz/600 g; 72 yds/66 m)

Teal Moss (62034) **4 balls or 280 yds/257 m (or 8 balls of 300 g)**

Size U.S. U/50 (25 mm) crochet hook **or size needed to obtain gauge.**



CROCHET | SKILL LEVEL: **EASY**

ABBREVIATIONS

Approx = Approximately

Ch = Chain(s)

Dc = Double crochet

Pat = Pattern

Rep = Repeat

RS = Right side

Sc = Single crochet

St(s) = Stitch(es)

Tr = Treble crochet

WS = Wrong side

MEASUREMENTS

Approx 44" x 46" [112 x 117 cm].

GAUGE

2.5 sc and 2 rows = 4" [10 cm].

INSTRUCTIONS

See Diagram on page 2.

Ch 28.

1st row: (RS). 1 sc in 2nd ch from hook and each of next 2 ch. *Ch 1. Skip next ch. 1 sc in each of next 3 ch. Rep from * to end of chain. 27 sts (sc and ch-1 sps).

2nd row: Ch 1. 1 sc in each of first 3 sc. *Ch 1. Skip next ch-1 sp. 1 sc in each of next 3 sc. Rep from * to end of row. Turn.

3rd row: Ch 1. 1 sc in each of first 2 sc. *Working in front of sts, 1 tr in skipped ch-1 of foundation chain. Ch 1. Skip sc behind tr just made and next ch-1 sp. 1 sc in each of next 2 sc. Rep from * to last sc. 1 sc in last sc. Turn.

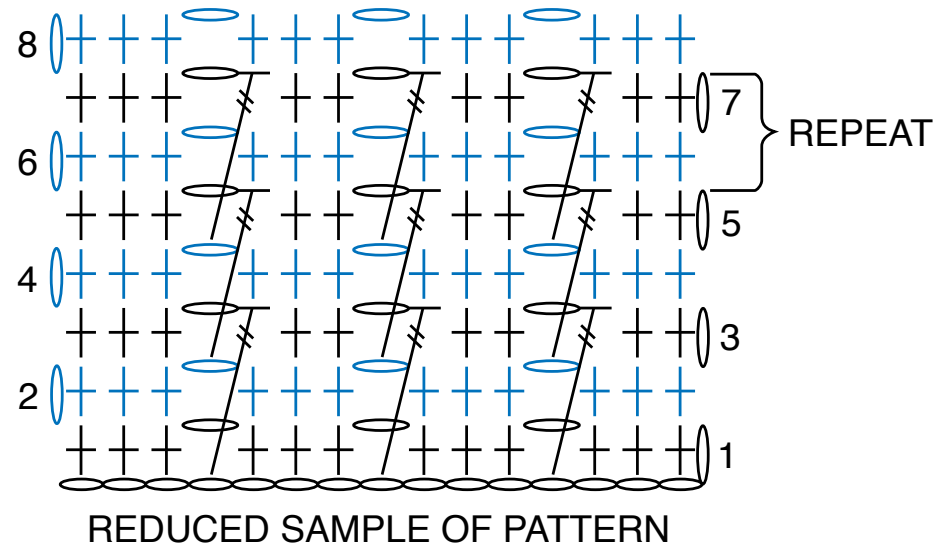
4th row: Ch 1. 1 sc in each of first 3 sc. *Ch 1. Skip next ch-1 sp. 1 sc in each of next 3 sts. Rep from * to end of row. Turn.

5th row: Ch 1. 1 sc in each of first 2 sc. *Working in front of sts, 1 tr in skipped ch-1 sp 3 rows below (2nd row). Ch 1. Skip sc behind tr and next ch-1 sp. 1 sc in each of next 2 sc. Rep from * to last sc. 1 sc in last sc. Turn.

6th row: As 4th row.

7th row: Ch 1. 1 sc in each of first 2 sc. *Working in front of sts, 1 tr in skipped ch-1 sp 3 rows below (4th row). Ch 1. Skip sc behind tr and next ch-1 sp. 1 sc in each of next 2 sc. Rep from * to last sc. 1 sc in last sc. Turn.

Rep 6th and 7th rows for pat until Blanket measures approx 46" [117 cm] or until all 280 yds/257 m of yarn have been used, ending on a RS row. Fasten off.



STITCH KEY

○ = chain (ch)

⊥ = single crochet (sc)

⊥
/ = treble crochet (tr)