



CROCHET | SKILL LEVEL: INTERMEDIATE

ABBREVIATIONS

Approx =	Pat = Pattern	Sl st(s) = Slip stitch(es)
Approximately	PM = Place marker	Sp(s) = Space(s)
Beg = Beginning	Rep = Repeat	St(s) = Stitch(es)
Ch = Chain(s)	RS = Right side	Tog = Together
Cont = Continuity	Sc = Single crochet	WS = Wrong side

MEASUREMENTS

Approx 36½" x 40" [92.5 x 101.5 cm].

GAUGE

7 sc and 8 rows = 4" [10 cm].

INSTRUCTIONS

Notes:

- Use separate sections of yarn for each area of color in the Chart. When joining colors, work to last 2 loops of first color. Pick up new color under previous color on WS to avoid a hole. Draw new color through 2 loops and proceed in new color, leaving previous color on WS.
- When working single color rows (5th to 8th, 13th to 16th, 65th to 68th and 73rd to 76th), break individual yarn sections and work with single section of A.

FRONT

Using separate yarn sections: *With MC, ch 3. *With A, ch 3. With MC, ch 4. With A, ch 3.* With MC, ch 38. Rep from * to * once more. With MC, ch 4. (65 ch total).

Beg working Chart in sc (see page 2), reading **RS** rows from **right to left** and **WS** rows from **left to right** and noting that each square represents 1 sc as follows:

1st row: (RS). With appropriate color, 1 sc in each ch to end of chain. Turn. 64 sc.

2nd row: With appropriate color, ch 1. 1 sc in each sc across. Turn. Keeping cont of chart, rep last row until 80th row of Chart is complete, ending on a WS row, PM at marked sts indicated in Chart. Fasten off.

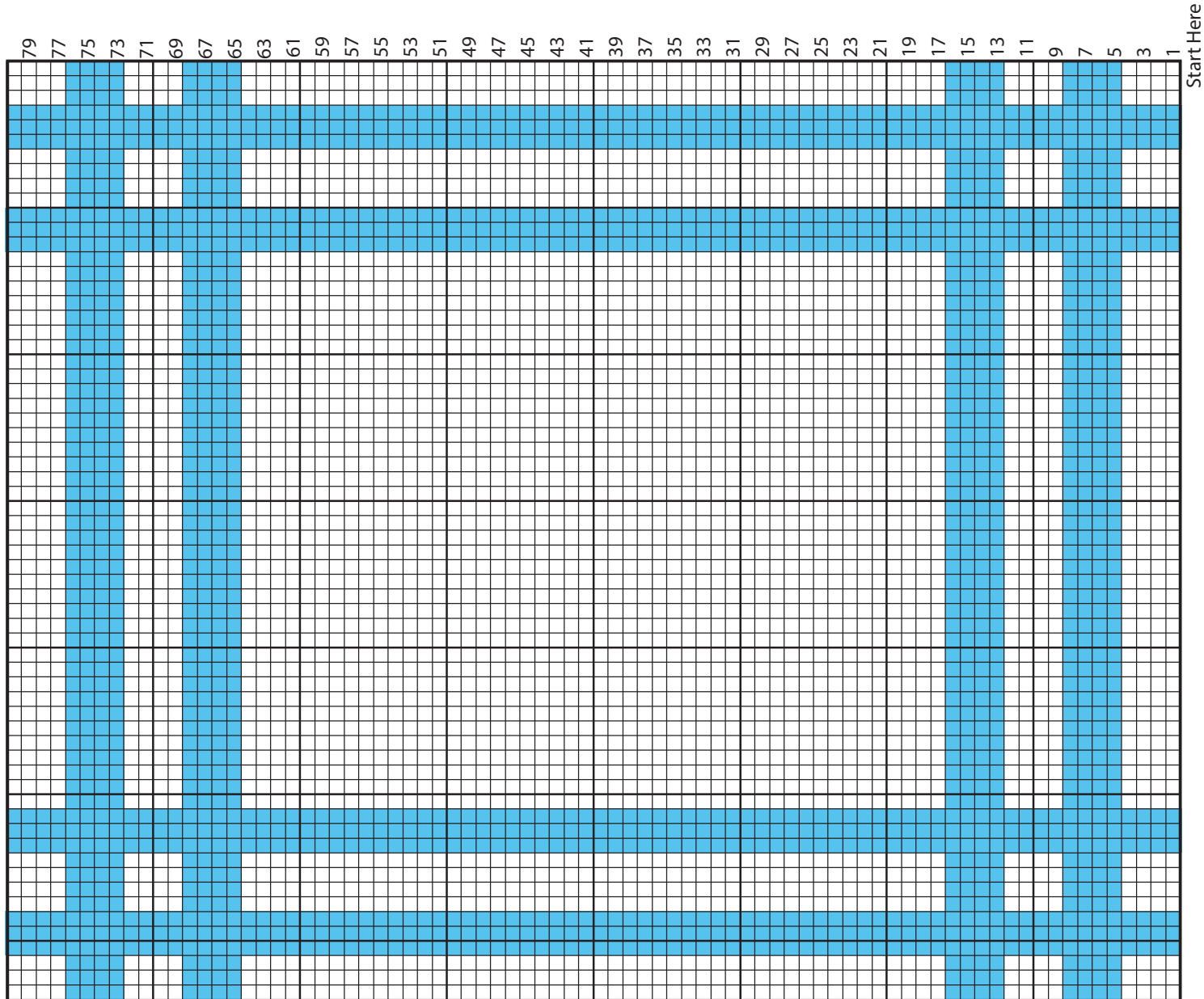
MATERIALS

Bernat® Baby Blanket™ (10.5 oz/300 g; 220 yds/201 m)

Main Color (MC) Vanilla (4008) **2 balls**

Contrast A Seafoam (4736) **1 ball**

Size U.S. L/11 Susan Bates®Silvalume® (8 mm) crochet hook **or size needed to obtain gauge.** Susam Bates® Stitch markers. Yarn needle.



Key
 □ = MC
 ■ = A