



CROCHET | SKILL LEVEL: INTERMEDIATE

## ABBREVIATIONS

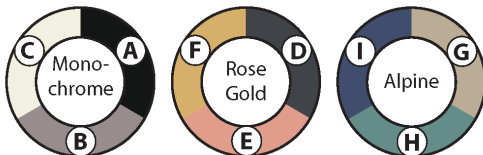
**Approx** = Approximately  
**Ch** = Chain(s)  
**Cont** = Continue(ity)  
**Dec** = Decrease(ing)  
**Inc** = Increase(ing)  
**Pat** = Pattern  
**Rem** = Remain(ing)(s)  
**Rep** = Repeat  
**Rnd(s)** = Round(s)  
**RS** = Right side

**Sc** = Single crochet  
**Sc2tog** = Draw up a loop in each of next 2 stitches. Yoh and draw through all loops on hook.  
**Sl st** = Slip stitch  
**Sp(s)** = Space(s)  
**St(s)** = Stitch(es)  
**Tog** = Together  
**WS** = Wrong side  
**Yoh** = Yarn over hook

## MATERIALS

**Bernat® Blanket™ O'Go™** (10.5 oz/300 g; 220 yds/201 m)

Monochrome (42001)	<b>4 O'Gos</b>
Rose Gold (42019)	<b>2 O'Gos</b>
Alpine (42016)	<b>2 O'Gos</b>



Size U.S. L/11 (8 mm) crochet hook **or size needed to obtain gauge.**  
 Stitch markers. T-pins for blocking. Safety pins for joining. Yarn needle.

## MEASUREMENTS

Approx 50" x 66" [127 x 167.5 cm].

## GAUGE

7 sc and 8 rows = 4" [10 cm].

## INSTRUCTIONS

### Notes:

- To begin working with the O'Go format, carefully cut plastic tie where the ends of the O'Go meet.
- Pull tie to remove.

- Colors can be easily separated by gently pulling apart and cutting at the color transition. Each color is ready to use.
- Designate each color A, B, C, D, E, F, G, H and I as indicated in shade palette.
- To join new color, work to last loops on hook of previous color. Yoh with new color, draw through rem loops and proceed with new color.
- Pattern is worked in multiple motifs that are joined together into 4 Panels during Assembly.
- Panels have sections worked off the sides before being seamed tog in Finishing.
- It may be helpful to place a removable st marker on RS of work to keep track of RS and WS.
- Gauge and Blocking are very important for this project. Please double check your gauge and dimensions for each Motif/Panel as you work to ensure all your pieces will fit tog in Finishing.
- If you achieve gauge, and your Motifs aren't measuring up, please try going up or down a hook size as necessary to get the correct Motif size. With bulky yarns, going up or down

a hook size won't necessarily affect the number of stitches in your measured gauge, but it can make a tighter or looser fabric with a very similar gauge that can affect the overall size of your finished Motif.

## BLANKET

### BIAS STRIPED SQUARE MOTIFS

(make 3)

Make 2 with Contrast Color as A.

Make 1 with Contrast Color as I.

#### Stripe Pat 1

With C, work 4 rows.

With Contrast Color, work 2 rows.

These 6 rows from Stripe Pat 1.

With C, ch 2.

**1st row:** (RS). 2 sc in 2nd ch from hook. Turn.

**2nd row:** Ch 1. 2 sc in each of 2 sc. Turn. 4 sc.

**3rd row:** Ch 1. 2 sc in first sc. 1 sc in each sc to last sc. 2 sc in last sc. Turn. 6 sc.

First 3 rows of Stripe Pat 1 are complete.

Keeping cont of Stripe Pat 1, rep 3rd row 17 times more. Turn. 40 sc.

Keeping cont of Stripe Pat 1 proceed as follows:

#### Dec Section:

**1st row:** (RS). Ch 1. Sc2tog. 1 sc in each sc to last 2 sc. Sc2tog. Turn. 38 sc.

**2nd to 18th rows:** Rep 1st row. 4 sc rem.

**19th row:** (RS). With C, ch 1. Sc2tog twice. Turn. 2 sc.

**20th row:** Ch 1. Sc2tog. Fasten off.

**Blocking:** Pin completed Bias Striped Square Motif to measure 16" [40.5 cm] square. Cover with a damp towel to dry.

#### PANEL I

See diagram on page 5.

#### RECTANGULAR MOTIF (make 1)

**Note:** Carry color not in use loosely up side of work unless otherwise specified.

#### Stripe Pat 2

With B, work 4 rows.

With D, work 4 rows.

These 8 rows form Stripe Pat 2.

With B, ch 57.

**1st row:** (RS). 1 sc in 2nd ch from hook. 1 sc in each ch to end of ch. Turn. 56 sc.

**2nd row:** Ch 1. 1 sc in each sc to end of row. Turn.

First 2 rows of Stripe Pat 2 are complete.

Keeping cont of Stripe Pat 2, rep 2nd row 30 times more, ending with 4 rows of D. Fasten off.

**Blocking:** Pin completed Rectangular Motif to measure 16" x 32" [40.5 x 81.5 cm]. Cover with a damp towel to dry.

#### Stripe Pat 3

With E, work 14 rows.

With C, work 4 rows.

With A, work 6 rows.

With G, work 8 rows.

These 32 rows form Stripe Pat 3.

Work across side edge of blocked Rectangular Motif as follows:

**1st row:** (RS). Join E with sl st to corner of Rectangular Motif to work across short edge (as shown in diagram). Ch 1. Work 28 sc evenly across short side edge of Rectangular Motif. Turn.

**2nd row:** Ch 1. 1 sc in each sc across. Turn.

First 2 rows of Stripe Pat 3 are complete.

Keeping cont of Stripe Pat 3, rep 2nd row 30 times more until 32 rows of Stripe Pat 3 are complete. Fasten off.

**Blocking:** Pin completed Panel to measure 16" x 48" [40.5 x 122 cm]. Cover with a damp towel to dry.

## PANEL II

See diagram on page 5.

### Stripe Pat 4

With H, work 22 rows.

With F, work 2 rows.

With H, work 8 rows.

With F, work 2 rows.

With H, work 6 rows.

With F, work 4 rows.

With H, work 4 rows.

With F, work 6 rows.

With H, work 2 rows.

With F, work 8 rows.

These 64 rows form Stripe Pat 4.

Work across side edge of blocked Bias Striped Square Motif (where Contrast Color is I) as follows:

**1st row:** (RS). Join H with sl st to corner of Bias Striped Square Motif to work across side edge as shown in diagram. Ch 1. Work 28 sc evenly across side edge of Bias Striped Square Motif. Turn.

**2nd row:** Ch 1. 1 sc in each sc across. Turn.

First 2 rows of Stripe Pat 4 are complete.

Keeping cont of Stripe Pat 4, rep 2nd row 62 times more until 64 rows of Stripe Pat 4 are complete. Fasten off.

**Blocking:** Pin completed Panel to measure 16" x 48" [40.5 x 122 cm]. Cover with a damp towel to dry.

## PANEL III

See diagram on page 5.

### SQUARE STRIPED MOTIF (make 1)

#### Stripe Pat 5

With I, work 4 rows.

With G, work 4 rows.

Rep last 8 rows twice more. Break I.

With A, work 4 rows.

With G, work 4 rows.

These 32 rows form Stripe Pat 5.

With I, ch 29.

**1st row:** (RS). 1 sc in 2nd ch from hook. 1 sc in each ch to end of ch. Turn. 28 sc.

**2nd row:** Ch 1. 1 sc in each sc to end of row. Turn.

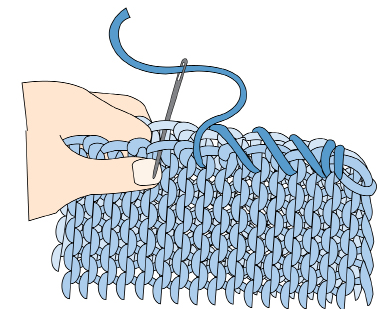
First 2 rows of Stripe Pat 5 are complete.

Keeping cont of Stripe Pat 5, rep 2nd row 30 times more until 32 rows of Stripe Pat 5 are complete. Fasten off.

**Blocking:** Pin completed Square Striped Motif to measure 16" [40.5 cm] square. Cover with a damp towel to dry.

**Joining:** (RS). Using color to match Motifs being joined, sew 2 Bias Striped Square Motifs (where Contrast Color is A), and Square Striped Motif tog as shown in diagram, using a flat seam and enclosing yarn carried up side of work, ensuring joining yarn is hidden in seam. Be careful not to pull seam too tightly to ensure straight and smooth edges along sides of Panel.

**Blocking:** Pin completed Panel to measure 16" x 48" [40.5 x 122 cm]. Cover with a damp towel to dry.



FLAT SEAM

## PANEL IV

See diagram on page 5.

## BIAS COLOR BLOCKED SQUARE MOTIF (make 1)

### Stripe Pat 6

With E, work 18 rows.

With C, work 4 rows.

With F, work 18 rows

These 40 rows form Stripe Pat 6.

With E, ch 2.

**1st row:** (RS). 2 sc in 2nd ch from hook. Turn.

**2nd row:** Ch 1. 2 sc in each of 2 sc. Turn. 4 sc.

**3rd row:** Ch 1. 2 sc in first sc. 1 sc in each sc to last sc. 2 sc in last sc. Turn. 6 sc.

First 3 rows of Stripe Pat 6 are complete.

Keeping cont of Stripe Pat 6, rep 3rd row 17 times more. Turn. 40 sc.

Keeping cont of Stripe Pat 6 proceed as follows:

### Dec Section:

**1st row:** (RS). Ch 1. Sc2tog. 1 sc in each sc to last 2 sc. Sc2tog. Turn. 38 sc.

Rep 1st row 17 times more until 4 sc rem.

**19th row:** (RS). With C, ch 1. (Sc2tog) twice. Turn. 2 sc.

**20th row:** Ch 1. Sc2tog. Fasten off.

**Blocking:** Pin completed Bias Striped Square Motif to measure 16" [40.5 cm] square. Cover with a damp towel to dry.

Work across first side edge of blocked Bias Color Blocked Square Motif as follows:

### Stripe Pat 7

With B, work 8 rows.

With D, work 4 rows.

With B, work 4 rows.

With I, work 6 rows.

With B, work 10 rows.

These 32 rows form Stripe Pat 7.

**1st row:** (RS). Join B with sl st to corner of Bias Color Blocked Square Motif to work across first edge (as shown in diagram). Ch 1. Work 28 sc evenly across first edge of Bias Color Blocked Square Motif. Turn.

**2nd row:** Ch 1. 1 sc in each sc across. Turn.

First 2 rows of Stripe Pat 7 are complete.

Keeping cont of Stripe Pat 7, rep 2nd row 30 times more until 32 rows of Stripe Pat 7 are complete. Fasten off.

### Stripe Pat 8

With A, work 8 rows. Join C. Break A.

With C, work 10 rows. Join A. Break C.

With A, work 14 rows.

These 32 rows form Stripe Pat 8.

**1st row:** (RS). Join A with sl st to corner of Bias Color Blocked Square Motif to work across second edge (as shown in diagram). Ch 1. Work 28 sc evenly across 2nd edge of Bias Color Blocked Square Motif. Turn.

**2nd row:** Ch 1. 1 sc in each sc across. Turn.

First 2 rows of Stripe Pat 8 are complete.

Keeping cont of Stripe Pat 8, rep 2nd row 30 times more until 32 rows of Stripe Pat 8 are complete. Fasten off.

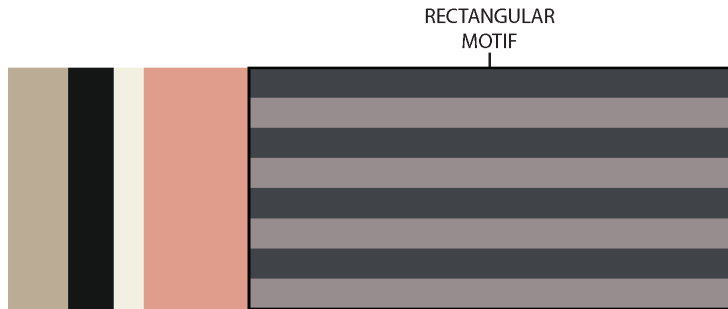
**Blocking:** Pin completed Panel to measure 16" x 48" [40.5 x 122 cm]. Cover with a damp towel to dry.

## FINISHING

**Joining:** (RS). Using color to match Panels being joined, sew Panels tog as shown in Panel Assembly diagram on page 6, using a flat seam and enclosing yarn carried up side of work, ensuring joining yarn is hidden in seam. Be careful not to pull seam too tightly to ensure straight and smooth edges along sides of Blanket.

**Edging: 1st rnd:** (RS). Join A with sl st to any corner of Blanket. Ch 1. Work sc evenly around Blanket, working (1 sc. Ch 2. 1 sc) in each corner. Join with sl st to first sc.

**2nd rnd:** Ch 1. Work 1 sc in each sc around, working (1 sc. Ch 1. 1 sc) in each ch-2 sp. Join with sl st to first sc. Fasten off.

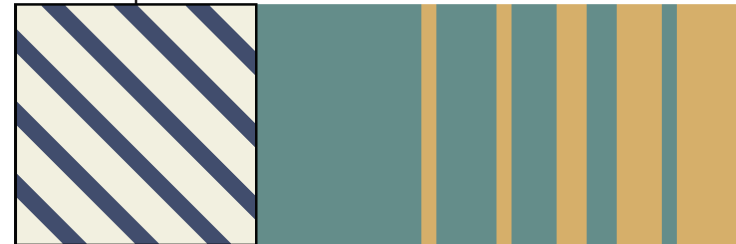


RECTANGULAR MOTIF

Work across side edge of Rectangular Motif in this direction

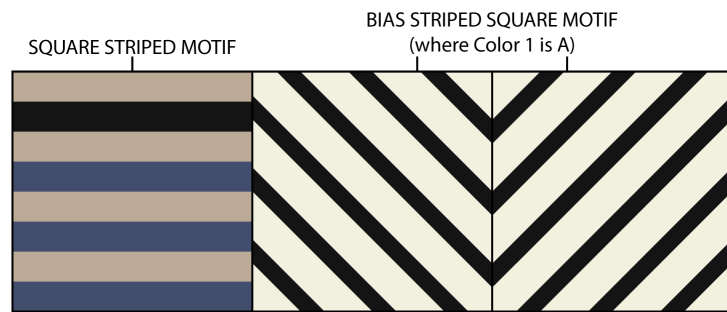
PANEL I

BIAS STRIPED SQUARE MOTIF (where Color 1 is I)



Work across side edge of Bias Striped Square Motif in this direction

PANEL II



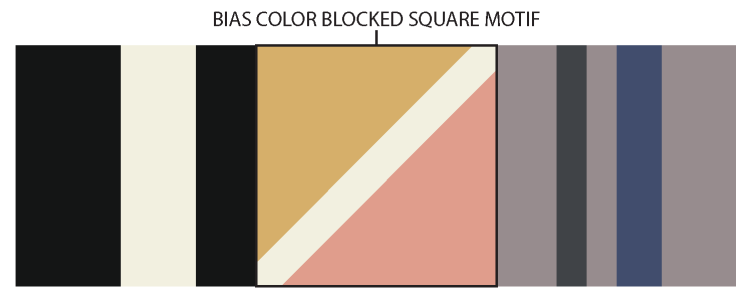
SQUARE STRIPED MOTIF

BIAS STRIPED SQUARE MOTIF (where Color 1 is A)

Join

Join

PANEL III

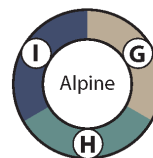
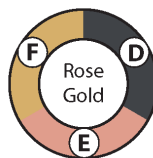
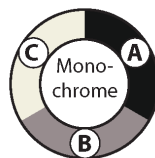


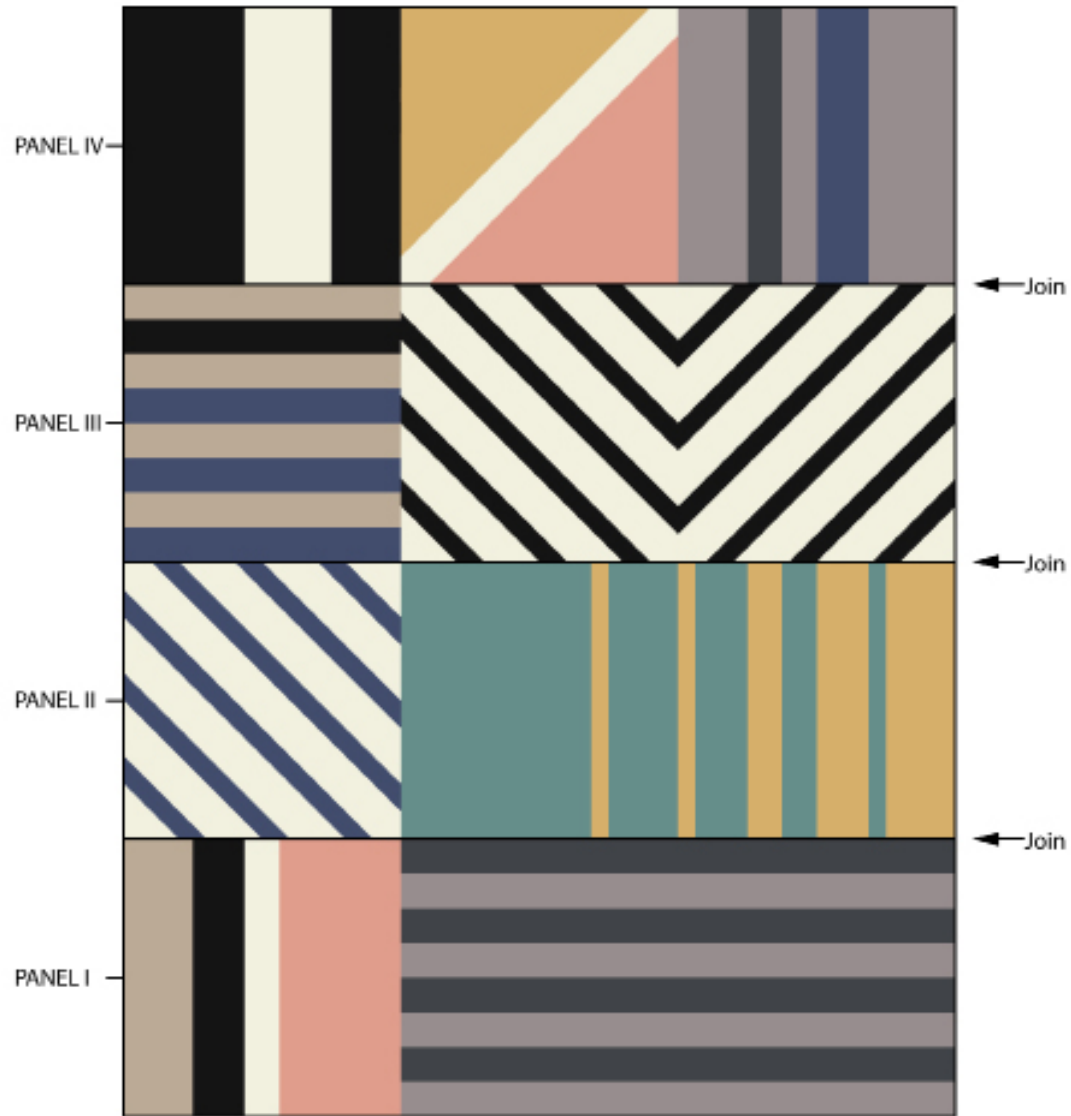
BIAS COLOR BLOCKED SQUARE MOTIF

Work across second edge of Bias Color Blocked Square Motif in this direction

Work across first edge of Bias Color Blocked Square Motif in this direction

PANEL IV





PANEL ASSEMBLY