



CROCHET | SKILL LEVEL: INTERMEDIATE

## ABBREVIATIONS

**Approx** =

Approximately

**Beg** = Begin(ning)

**Ch** = Chain(s)

**Cont** = Continuity

**Dc** = Double crochet

**Dec** = Decrease

**Hdc** = Half double  
crochet

**Rem** = Remaining

**Rep** = Repeat

**Rnd(s)** = Round(s)

**RS** = Right side

**Sl st** = Slip stitch

**Sp(s)** = Space(s)

**St(s)** = Stitch(es)

**Yoh** = Yarn over hook

## MATERIALS

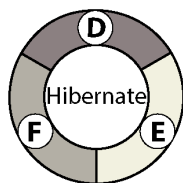
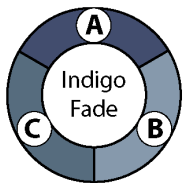
**Bernat® Blanket™ O'Go™** (10.5 oz/300 g; 220 yds/201 m)

Indigo Fade (42011)

**4 O'Gos**

Hibernate (42003)

**2 O'Gos**



Size U.S. L/11 (8 mm) crochet hook **or size needed to obtain gauge.**  
Stitch marker. Yarn needle.

## MEASUREMENTS

Approx 44 x 53" [112 x 134.5 cm].

## GAUGE

7 dc and 4 rows = 4" [10 cm].

## INSTRUCTIONS

### Notes:

- To begin working with the O'Go format, carefully cut plastic tie where the ends of the O'Go meet.
- Pull tie to remove.

- For this pattern, colors can be easily separated by gently pulling apart and cutting at the color transition. Each color is ready to use. Follow color guide shown in Materials section for each O'Go (Contrast A, B, C, D, E and F). You may find it helpful to place each color section in its own resealable (zip lock) bag and label each bag – A, B, C, D, E, F.

- Blanket is worked diagonally from corner to corner.
- When working from chart, use separated colors from O'Gos for each separate area of color in the design.
- Start new colors at appropriate points.
- To change color, work to last 2 loops on hook, yoh with new color. Pull through 2 loops on hook to complete st and proceed in new color.

### BLANKET

See Chart on page 3.  
With A, ch 6.

**1st row:** (RS). 1 dc in 4th ch from hook (counts as 2 dc). 1 dc in each of last 2 ch. Turn. 1 block made.

**2nd row:** Ch 6. 1 dc in 4th ch from hook. 1 dc in each of next 2 ch - beg block made. (Sl st. Ch 3. 3 dc) in next ch-3 sp - block made. Turn. 2 blocks.

**3rd row:** Beg block. \*Block in next ch-3 sp. Rep from \* to end of row. Turn. 3 blocks.

Keeping cont of color changes in Chart (each square on grid represents 1 block), rep last row until 33rd row of chart is complete. 33 blocks.

Keeping cont of Chart, proceed as follows to work sides even:

**34th row:** Beg block. \*Block in next ch-3 sp. Rep from \* to last ch-3 sp. Sl st in last ch-3 sp. (**Do not** make a block). 33 blocks. Turn.  
**36th to 40th rows:** Rep last 2 rows twice more.

**35th row:** Sl st in each of first 3 dc. \*Block in next ch-3 sp. Rep from \* to end of row. Turn. 33 blocks.

Keeping cont of Chart, proceed as follows to dec corner:

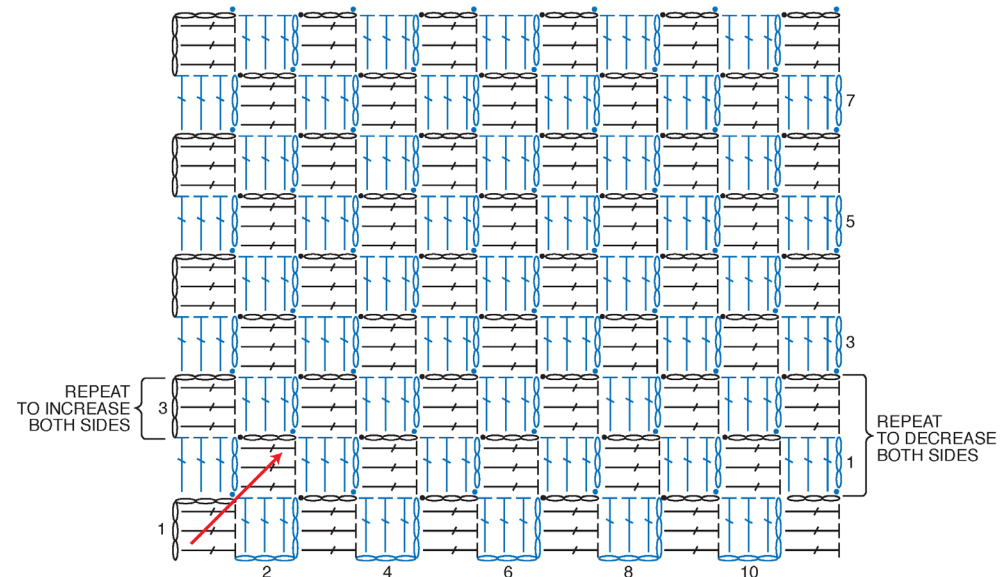
**41st row:** Sl st in each of first 3 dc. \*Block in next ch-3 sp. Rep from \* to last ch-3 sp. Sl st in last ch-3 sp. (**Do not** make a block). 32 blocks. Turn.

Rep last row until 1 block rem. (71 rows of chart are complete). Fasten off.

**Edging:** With RS facing, join D with sl st between any 2 blocks along edge.

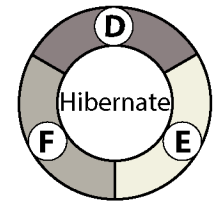
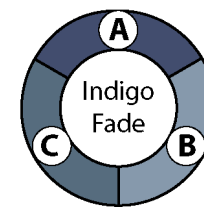
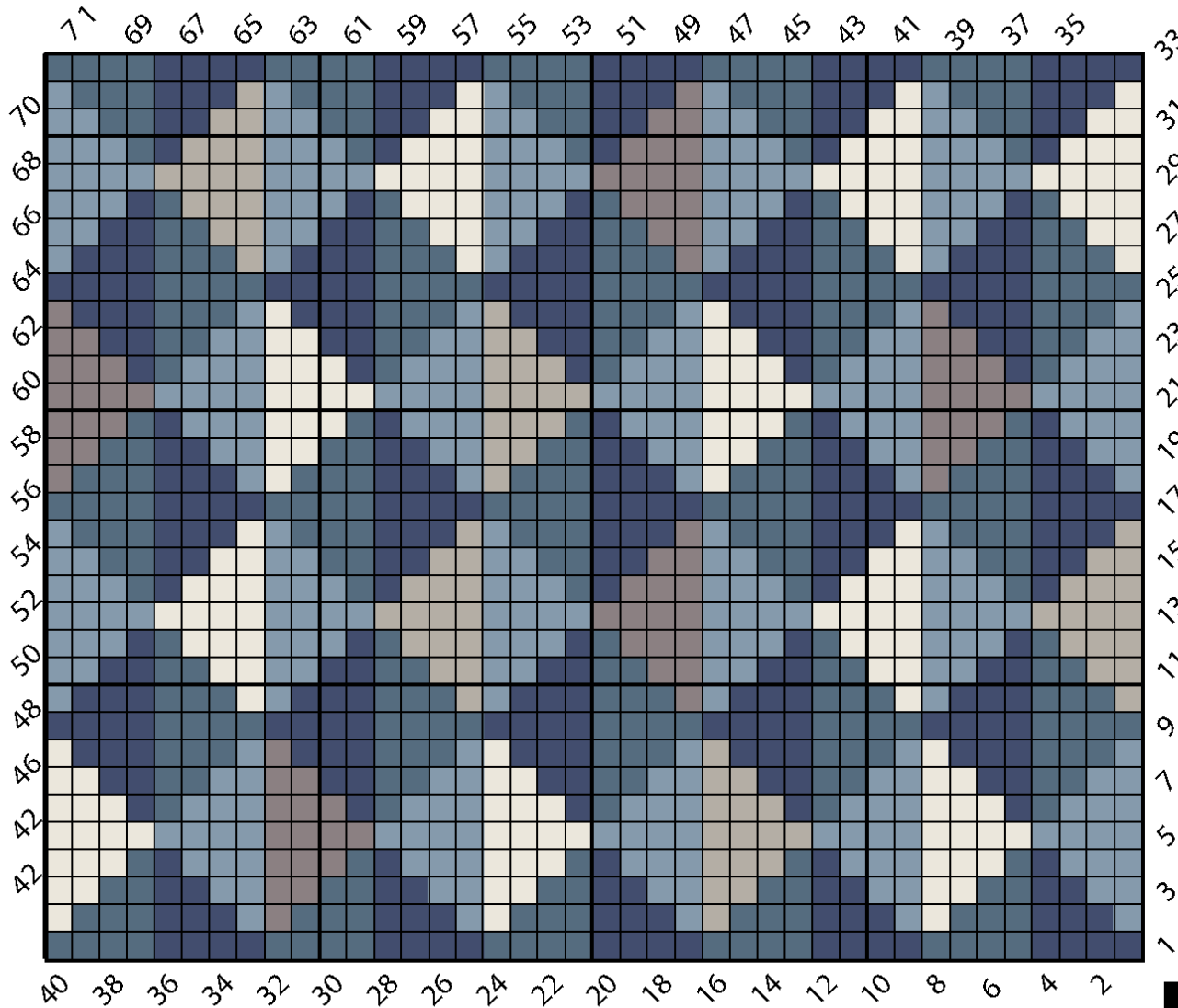
**1st rnd:** Ch 3. \*Sl st between next 2 blocks. Ch 3. Rep from \* around working (Sl st. Ch 3. Sl st) in each corner. Join with sl st in first sl st. Turn.

**2nd rnd:** Sl st in next ch-3 sp. Ch 2 (counts as hdc). 2 hdc in same sp as last sl st. \*3 hdc in next ch-3 sp. Rep from \* around, working (3 hdc. Ch 1. 3 hdc) in corner ch-3 sp. Join with sl st to top of ch-2. Fasten off.



### STITCH KEY

- = chain (ch)
- = slip stitch (sl st)
- ⌋ = double crochet (dc)



Start Here