



SUPER BULKY **CROCHET | SKILL LEVEL: INTERMEDIATE**

ABBREVIATIONS

- | | | |
|----------------------------|--------------------------|----------------------------|
| Approx = | Pat = Pattern | Sc = Single crochet |
| Approximately | PM = Place marker | Sl st = Slip stitch |
| Beg = Begin(ning) | Rem = Remaining | Sp(s) = Space(s) |
| Ch = Chain(s) | Rep = Repeat | Tog = Together |
| Dc = Double crochet | RS = Right side | WS = Wrong side |

MEASUREMENTS

Approx 44 x 61" [112 x 155 cm].

GAUGES

7 dc and 4 rows = 4" [10 cm].
2.5 blocks = 4" [10 cm].

INSTRUCTIONS

Notes:

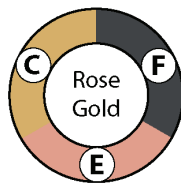
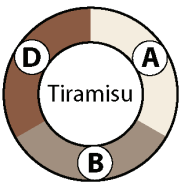
- To begin working with the O'Go format, carefully cut plastic tie where the ends of the O'Go meet.
- Pull tie to remove.
- For this pattern, colors can be easily separated by gently pulling apart and cutting at the color transition. Each color is ready to use. Follow color guide shown in Materials section for each O'Go (Contrast A, B, C, D, E, F). You may find it helpful to place each color section in its own resealable (zip lock) bag and label each bag – A, B, C, D, E, F.

MATERIALS

Bernat® Blanket™ O'Go™ (10.5 oz/300 g; 220 yds/201 m)

Contrast A Tiramisu (42030) **3 O'Gos**

Contrast B Rose Gold (42019) **3 O'Gos**



Size U.S. L/11 (8 mm) crochet hook **or size needed to obtain gauge.** Stitch marker. Yarn needle.

- To change color, work to last 2 loops on hook and draw new color through last 2 loops, then proceed in new color.

FIRST SIDE

(See diagram on page 3).

With F, ch 6.

1st row: (RS). 1 dc in 4th ch from hook. 1 dc in each of last 2 ch. Turn.

2nd row: Ch 6. 1 dc in 4th ch from hook. 1 dc in each of next 2 ch. Skip next 3 dc. Sl st to next ch-3 sp. Ch 3. 3 dc in same ch-3 sp. Turn.

3rd row: Ch 6. 1 dc in 4th ch from hook. 1 dc in each of next 2 ch. *Skip next 3 dc. Sl st to next ch-3 sp. Ch 3. 3 dc in same sp as last sl st. Rep from * to end of row. Turn. Rep last row until side edge measures approx 22" [56 cm], ending on a WS row (even number of blocks). Fasten off.

SECOND SIDE: Work as given for First Side. Join C at end of last row. Break F.

Join Sides and beg working Chevron Pat:

1st row: (RS). With C, work across Second Side: Ch 6. 1 dc in 4th ch from hook. 1 dc in each of next 2 ch. *Skip next 3 dc. Sl st to next ch-3 sp. Ch 3. 3 dc in same sp as last sl st. Rep from * to last block. Skip next 3 dc. Sl st to next ch-3 sp of first block of First Side. Ch 3. PM on last ch. **3 dc in same sp as last sl st. Sl st to next ch-3 sp. Ch 3. Rep from ** to last block. 3 dc in same sp as last sl st. Turn.

2nd row: Ch 6. 1 dc in 4th ch from hook. 1 dc in each of next 2 ch. *Skip next 3 dc. Sl st to next ch-3 sp. Ch 3. 3 dc in same sp as last sl st. Rep from * to marker on ch-3 sp. Skip next 3 dc. Sl st to next marked ch-3 sp. Skip next 3 dc. Sl st to next ch-3 sp. Ch 3. PM on last ch. **3 dc in same sp as last sl st. Skip next 3 dc. Sl st to next ch-3 sp. Ch 3. Rep from ** to last block. 3 dc in same sp as last sl st. Turn.

Rep last row until C section measures 6" [15 cm], ending on a WS row. Join D at end of last row. Break C.

With D, rep last row until D section measures 10" [25.5 cm], ending on a WS row. Join E at end of last row. Break D.

With E, rep last row until E section measures 6" [15 cm], ending on a WS row. Join B at end of last row. Break E.

With B, rep last row until B section measures 10" [25.5 cm], ending on a WS row. Fasten off B.

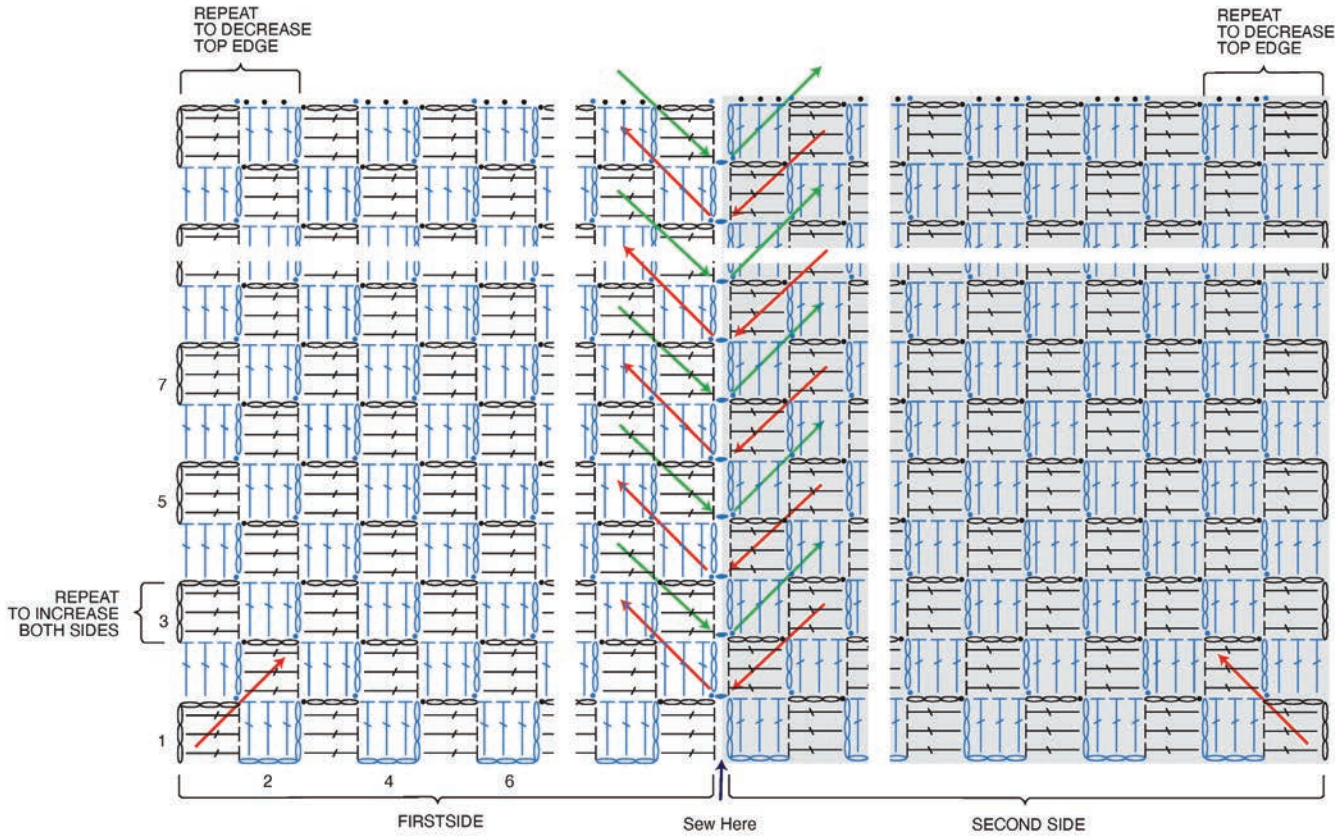
Proceed as follows:

Next row: (RS). Skip first 3 dc. Join A with sl st to next ch-3 sp. Ch 3. 3 dc in same sp as sl st. *Skip next 3 dc. Sl st in next ch-3 sp. Ch 3. 3 dc in same sp as last sl st. Rep from * to marker on ch-3 sp. Skip next 3 dc. Sl st to next marked ch-3 sp. Skip next 3 dc. Sl st to next ch-3. Ch 3. PM on last ch. **3 dc in same sp as last sl st. Sl st to next ch-3 sp. Ch 3. Rep from ** to last 2 blocks. 3 dc in same sp as last sl st. Sl st to next ch-3 sp. Turn.




Next row: Sl st in first 3 dc and next ch-3 sp. Ch 3. 3 dc in same sp as sl st. *Skip next 3 dc. Sl st in next ch-3 sp. Ch 3. 3 dc in same sp as last sl st. Rep from * to marker on ch-3 sp. Skip next 3 dc. Sl st to next marked ch-3 sp. Skip next 3 dc. Sl st to next ch-3. Ch 3. PM on last ch. **3 dc in same sp as last sl st. Sl st to next ch-3 sp. Ch 3. Rep from ** to last 2 blocks. 3 dc in same sp as last sl st. Sl st to next ch-3 sp. Turn.

Rep last row until 2 blocks rem.

Next row: Sl st in first 3 dc and next ch-3 sp. Sl st to next ch-3. Fasten off. Sew blocks tog at base of joining Sides (see diagram on page 3).



STITCH KEY

-  = chain (ch)
-  = single crochet (sc)
-  = double crochet (dc)

