



CROCHET | SKILL LEVEL: INTERMEDIATE

ABBREVIATIONS

Approx = Approximately

Beg = Beginning

Ch = Chain(s)

Cont = Continue(ity)

Dc = Double crochet

Mosaic Dc = Working in front of chain spaces, work 1 dc in skipped sc 3 rows below.

Pat = Pattern

Prev = Previous

Rep = Repeat

RS = Right side

Sc = Single crochet

Sc2tog = Draw up a loop in each of next 2 stitches. Yoh and draw through all 3 loops on hook

Sl st = Slip stitch

Sp(s) = Space(s)

St(s) = Stitch(es)

Yoh = Yarn over hook

MATERIALS

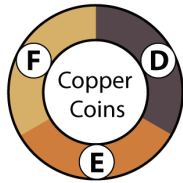
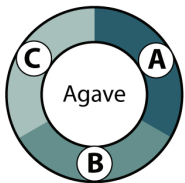
Bernat® Blanket™ O'Go™ (10.5 oz/300 g; 220 yds/201 m)

Agave (42010)

3 O'Gos

Copper Coins (42014)

3 O'Gos



Size U.S. L/11 (8 mm) crochet hook **or size needed to obtain gauge.**
Yarn needle.

MEASUREMENTS

Approx 53" x 59" [134.5 x 150 cm].

GAUGES

7 sts and 8 rows = 4" [10 cm] in Mosaic Pat.

9 sts and 9 rows = 4" [10 cm] in Sc/Ch-1 Pat.

INSTRUCTIONS

Notes:

- To begin working with the O'Go format, carefully cut plastic tie where the ends of the O'Go meet.
- Pull tie to remove.

- Separate colors by gently pulling apart and cutting at the color transition. Each color is ready to use.
- To change color, work to last loop on hook of prev color. Yoh with new color, draw through loop, tighten prev color and proceed with new color
- While working mosaic panels, carry color when not in use loosely up side of work
- Each skipped sc has ch-1(2) worked above it for 2 rows. This establishes the 'gap' where Mosaic Dc will later be worked
- Mosaic Dc always replaces sc directly behind it on working row
- WS of your work maintains alternating 2-row striped pattern because you are working in front of chain spaces each time you work Mosaic Dc - you are never working around chain-spaces. The chain-spaces are positioned behind Mosaic Dc.

Stripe Pat I

With A, work 3 rows.
With F, work 3 rows.
With B, work 3 rows.
With D, work 3 rows.
With C, work 3 rows.
With E, work 3 rows.
These 18 rows form Stripe Pat I.

Stripe Pat II

With E, work 3 rows.
With C, work 3 rows.
With D, work 3 rows.
With B, work 3 rows.
With F, work 3 rows.
With A, work 3 rows.
These 18 rows for Stripe Pat II.

Mosaic Panel

(see diagram on page 4).
Work Panel I with A as Color 1 and F as Color 2.
Work Panel II with C as Color 1 and E as Color 2.
Work Panel III with B as Color 1 and D as Color 2.

****1st row:** (RS). With Color 1, ch 1. 1 sc in each of next 7 sc. *Sc2tog. 1 sc in each of next 2 sc. Rep from * to last 5 sc. 1 sc in each of last 6 sc. Turn. 91 sc.

2nd row: Ch 1. 1 sc in each sc to end of row. Join Color 2. Turn.

3rd and 4th rows: With Color 2, Ch 1. 1 sc in each sc to end of row. Join Color 1. Turn.

5th row: With Color 1, ch 1. 1 sc in first sc. *Ch 1. Skip next sc. 1 sc in each of next 2 sc. Ch 1. Skip next sc. 1 sc in next sc. Ch 1. Skip next sc. 1 sc in next sc. Ch 1. Skip next sc. 1 sc in each of next 3 sc. Ch 1. Skip next sc. 1 sc in next sc. Rep from * to last 10 sc. Ch 1. Skip next sc. 1 sc in each of next 2 sc. Ch 1. Skip next sc. 1 sc in next sc. Ch 1. Skip next sc. 1 sc in each of next 2 sc. Ch 1. Skip next sc. 1 sc in next sc. Ch 1. Skip next sc. 1 sc in each of next 2 sc. Ch 1. Skip next sc. 1 sc in last sc. Turn.

6th row: Ch 1. 1 sc in next sc. Ch 1. Skip next ch. 1 sc in each of next 2 sc. Ch 1. Skip next ch. 1 sc in next sc. Ch 1. Skip next ch. 1 sc in each of next 2 sc. Ch 1. Skip next ch. *1 sc in next sc. Ch 1. Skip next ch. 1 sc in each of next 3 sc. Ch 1. Skip next ch. 1 sc in next sc. Ch 1. Skip next ch. 1 sc in each of next 2 sc. Ch 1. Skip next ch. 1 sc in next sc. Ch 1. Skip next ch. 1 sc in each of next 2 sc. Ch 1. Skip next ch. Rep from * to last sc. 1 sc in next sc. Join Color 2. Turn.

7th row: With Color 2, ch 1. 1 sc in next sc. *Mosaic Dc. 1 sc in next sc. (Ch 1. Skip next sc. Mosaic Dc) twice. Ch 1. Skip next sc. 1 sc in next sc. (Mosaic Dc. Ch 1. Skip next sc) twice. 1 sc in next sc. Ch 1. Skip next sc. Mosaic Dc. Ch 1. Skip next sc. Rep from * to last 10 sts. Mosaic Dc. 1 sc in next sc. (Ch 1. Skip next sc. Mosaic Dc) twice. Ch 1. Skip next sc. 1 sc in next sc. Mosaic Dc. 1 sc in last sc. Turn.

8th row: Ch 1. 1 sc in each of next 3 sts. (Ch 1. Skip next ch. 1 sc in next sc) 3 times. 1 sc in next st. *(Ch 1. Skip next ch. 1 sc in next st) 4 times. (1 sc in next sc. Ch 1. Skip next ch) 3 times. 1 sc in each of next 2 sts. Rep from * to last sc. 1 sc in last sc. Join Color 1. Turn.

9th row: With Color 1, ch 1. 1 sc in next sc. *Ch 1. Skip next sc. (1 sc in next sc. Mosaic Dc) 3 times. 1 sc in next sc. Ch 1. Skip next sc. Mosaic Dc. Ch 1. Skip next sc. Mosaic Dc. Ch 1. Skip next sc. Mosaic Dc. Ch 1. Skip next sc. Mosaic Dc. Rep from * to last 10 sts. Ch 1. Skip next sc. (1 sc in next sc. Mosaic Dc) 3 times. 1 sc in next sc. Ch 1. Skip next sc. 1 sc in last sc. Turn.

10th row: Ch 1. 1 sc in next sc. Ch 1. Skip next ch. 1 sc in each of next 7 sts. Ch 1. Skip next ch. *1 sc in next st. Ch 1. Skip next ch. 1 sc in each of next 3 sts. Ch 1. Skip next ch. 1 sc in next st. Ch 1. Skip next ch. 1 sc in each of next 7 sts. Ch 1. Skip next ch. Rep from * to last sc. 1 sc in last sc. Join Color 2. Turn.

11th row: With Color 2, ch 1. 1 sc in next sc. *Mosaic Dc. (1 sc in next sc. Ch 1. Skip next sc) 3 times. 1 sc in next sc. Mosaic Dc. Ch 1. Skip next sc. Mosaic Dc. Ch 1. Skip next sc. 1 sc in next sc. Ch 1. Skip next sc. Mosaic Dc. Ch 1. Skip next sc. Rep from * to last 10 sts. Mosaic Dc. (1 sc in next sc. Ch 1. Skip next sc) 3 times. 1 sc in next sc. Mosaic Dc. 1 sc in last sc. Turn.

12th row: Ch 1. 1 sc in each of next 3 sts. (Ch 1. Skip next ch. 1 sc in next st) 3 times. 1 sc in next sc. *(Ch 1. Skip next ch. 1 sc in next st) 4 times. (1 sc in next st. Ch 1. Skip next ch) 3 times. 1 sc in each of next 2 sts. Rep from * to last sc. 1 sc in last sc. Join Color 1. Turn.

13th row: With Color 1, Ch 1. 1 sc in next sc. *Ch 1. Skip next sc. 1 sc in next sc. (Mosaic Dc. Ch 1. Skip next sc) twice. Mosaic Dc. 1 sc in next sc. (Ch 1. Skip next sc. Mosaic Dc) twice. 1 sc in next sc. Mosaic Dc. Ch 1. Skip next sc. Mosaic Dc. Rep from * to last 10 sts. Ch 1. Skip next sc. 1 sc in next sc. (Mosaic Dc. Ch 1. Skip next sc) twice. Mosaic Dc. 1 sc in next sc. Ch 1. Skip next sc. 1 sc in last sc. Turn.

14th row: Ch 1. 1 sc in next sc. Ch 1. Skip next ch. 1 sc in each of next 2 sts. (Ch 1. Skip next ch. 1 sc in next st) twice. 1 sc in next sc. Ch 1. Skip next ch. *1 sc in next st. Ch 1. Skip next ch. 1 sc in each of next 3 sts. (Ch 1. Skip next ch. 1 sc in next st) twice. 1 sc in next st. Ch 1 Skip next ch. 1 sc in next st. Ch 1. Skip next ch. 1 sc in each of next 2 sts. Ch 1. Skip next ch. Rep from * to last sc. 1 sc in last sc. Break Color 2. Join Color 2. Turn.

15th row: With Color 2, ch 1. 1 sc in next sc. *Mosaic Dc. (1 sc in each of next 2 sc. Mosaic Dc. 1 sc in next sc. Mosaic Dc) twice. 1 sc in each of next 3 sc. Mosaic Dc. 1 sc in next sc. Rep from * to last 10 sts. Mosaic Dc. 1 sc in each of next 2 sc. Mosaic Dc. 1 sc in next sc. Mosaic Dc. 1 sc in each of next 2 sc. Mosaic Dc. 1 sc in last sc. Turn.

16th row: Ch 1. 1 sc in each st to end of row. Break Color 2. Join Color 1. Turn.

17th row: With Color 1, ch 1. 1 sc in each sc to end of row. Turn.

18th row: Ch 1. 1 sc in each of next 6 sc. *2 sc in next st. 1 sc in each of next 2 sts. Rep from * to last 5 sts. 1 sc in each of last 5 sts. Turn. 117 sc.**

BLANKET

With A, ch 118.

1st row: (RS). 1 sc in 2nd ch from hook. *Ch 1. Skip next ch. 1 sc in next ch. Rep from * to end of chain. Turn. 117 sts.

*****2nd row:** Ch 1. 1 sc in first sc. *1 sc in next ch-1 sp. Ch 1. Skip next sc. Rep from * to last 2 sts. 1 sc in each of last 2 sts. Turn.

3rd row: Ch 1. 1 sc in first sc. *Ch 1. Skip next sc. 1 sc in next ch-1 sp. Rep from * to last 2 sts. Ch 1. Skip next sc. 1 sc in last sc. Turn.***
First 3 rows of Stripe Pat I are now complete.

Keeping cont of Stripe Pat I, rep from *** to *** until all 18 rows of Stripe Pat I are complete, ending on a 2nd row.

Break E. Join A. Work from ** to ** for Mosaic Panel I.

Break A. Join E. Rep from *** to *** until 18 rows of Stripe Pat II are complete, ending with a 3rd row.

Break A. Join C. Work from ** to ** for Mosaic Panel II.

Break C. Join A. Rep from *** to *** until 18 rows of Stripe Pat I are complete, ending with a 3rd row.

Break A. Join B. Work from ** to ** for Mosaic Panel III.

Break B. Join E. Rep from *** to *** until 18 rows of Stripe Pat II are complete, ending with a 3rd row. Fasten off.

Right Edging: With RS facing, join D with sl st to bottom right corner of Blanket.

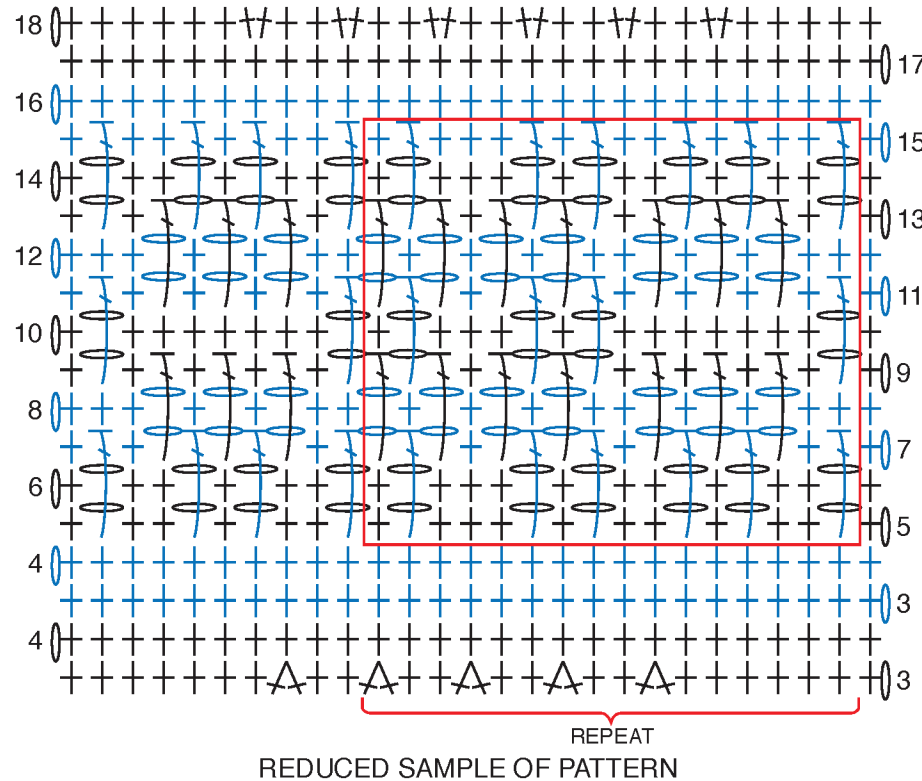
1st row: Ch 1. Work 103 sc evenly across side of Blanket. Fasten off.






Left Edging: With RS facing, join D with sl st to top left corner of Blanket.

1st row: Ch 1. Work 103 sc evenly across side of Blanket. Fasten off.



MOSAIC PANEL DIAGRAM



- STITCH KEY
-  = chain (ch)
 -  = slip stitch (sl st)
 -  = single crochet (sc)
 -  = Mosaic double crochet (Mosaic dc)
 -  = single crochet 2 together (sc2tog)