



KNIT I SKILL LEVEL: EASY

## ABBREVIATIONS

**Alt** = Alternate

**Approx** =  
Approximately

**Beg** = Begin(ning)

**Cont** = Continue(ity)

**Dec** = Decrease

**Inc** = Increase

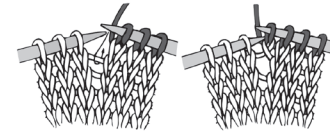
**K** = Knit

**Kfb** = Increase  
1 stitch by knitting

into front and back of  
next stitch

**K2tog** = Knit next  
2 stitches together

**M1** = Make 1 stitch  
by picking up  
horizontal loop lying  
before next stitch  
and knitting into  
back of loop



**P3tog** = Purl next  
3 stitches together

**Rep** = Repeat

**RS** = Right side

**Ssk** = Slip next  
2 stitches knitwise  
one at a time. Pass  
them back on to left-  
hand needle, then  
knit through back  
loops together

**St(s)** = Stitch(es)

**Tog** = Together

**WS** = Wrong side

## MATERIALS

**Bernat® Blanket™** (10.5 oz/300 g; 220 yds/201 m)

**Contrast A** Tan Pink (10898) **2 balls or 410 yds/375 m**

**Bernat® Baby Blanket™** (10.5 oz/300 g; 220 yds/201 m)

**Contrast B** Strawberry Sprinkles (04871) **1 ball or 75 yds/68.5m**

Size U.S. 11 (8 mm) circular knitting needle 29" [73.5 cm] long **or size needed to obtain gauge.** Yarn needle. Small quantity of worsted weight black yarn for duplicate stitch embroidery.

## MEASUREMENTS

Approx 36" x 40" [91.5 x 101.5 cm].

## GAUGE

8 sts and 13 rows = 4" [10 cm] in stocking st.

## INSTRUCTIONS

### Notes:

- When working from chart, wind small balls of the colors to be used, one for each separate area of color in the design

- To change colors, wind the 2 colors around each where they meet, on WS, to avoid a hole.

## BLANKET

**Edging:** With A, cast on 64 sts. **Do not** join. Working back and forth across needle in rows, proceed as follows:

Knit 4 rows (garter st), noting that 1st row is WS.

**Inc row:** K3. Kfb. (K7. Kfb) 7 times. K4. 72 sts.

**Blanket Body: 1st row:** (RS). Knit.  
**2nd row:** K4. Purl to last 4 sts. K4.  
 Rep these 2 rows until work from beg measures 12" [30.5 cm], ending on a WS row.

**Chart I (shown right).**

**1st row:** (RS). K29. Knit 1st row of Chart I across next 14 sts, reading row from right to left. K29.

**2nd row:** K4. P25. Purl 2nd row of Chart I across next 14 sts, reading row from left to right. P25. K4.

Keeping cont of Chart I, as placed in last 2 rows, work even until Chart I is complete.

**Next row:** (RS). With A, knit.

**Next row:** K4. Purl to last 4 sts. K4.  
 Rep these 2 rows until work from beg measures 38½" [98 cm], ending on a WS row.

**Edging: Dec row:** (RS). K3. K2tog. (K7. K2tog) 7 times. K4. 64 sts.

Knit 4 rows (garter st).  
 Cast off knitwise (WS).

**FINISHING**

Following Chart II and using black worsted weight yarn held double, work duplicate st to embroider Eyes, Nose, and Mouth.

**Ears** (make 2 each with A and B)  
 Cast on 7 sts.

**1st row:** (RS). Knit.

**2nd and alt rows:** Purl.

**3rd row:** K3. M1. K1. M1. K3. 9 sts.

**5th row:** K4. M1. K1. M1. K4. 11 sts.

**7th row:** K5. M1. K1. M1. K5. 13 sts.

**9th row:** K6. M1. K1. M1. K6. 15 sts.

Beg on a purl row, work 7 rows even in stocking st.

**Beg dec:**

**1st row:** (RS). K1. ssk. Knit to last 3 sts. K2tog. K1.

**2nd row:** Purl.

**3rd row:** Knit.

**4th row:** Purl.

Rep last 4 rows twice more. 9 sts.

**Next row:** K1. ssk. Knit to last 3 sts. K2tog. K1.

**Next row:** Purl.

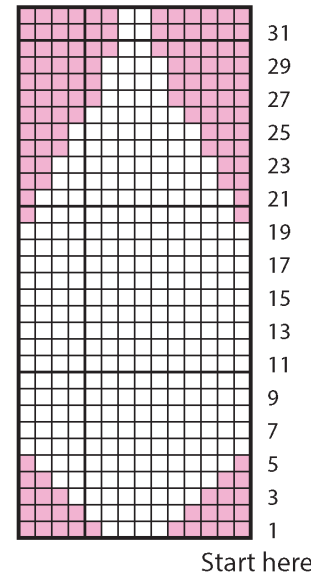
Rep last 2 rows once more. 5 sts.

**Next row:** K2tog. K1. ssk. 3 sts.

**Next row:** P3tog. Fasten off.

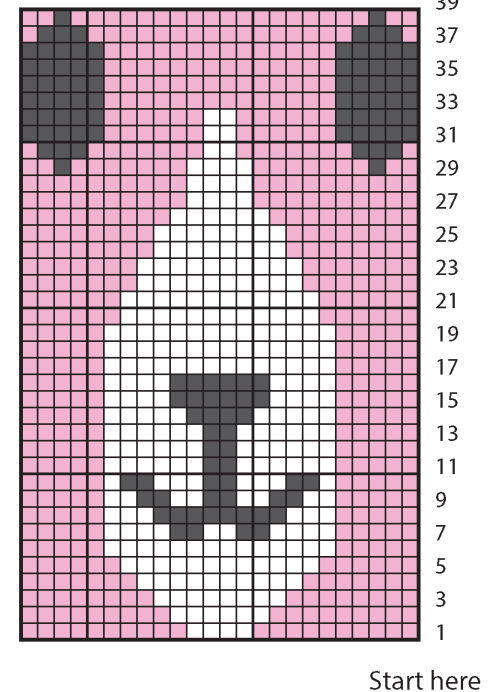
With WS tog, sew A Ear to B Ear.  
 Sew to Blanket as shown in photo.

CHART I: INTARSIA



Key  
 ■ = Contrast A  
 □ = Contrast B

CHART II: DUPLICATE STITCH



Key  
 ■ = Contrast A  
 □ = Contrast B  
 ■ = Duplicate st

DUPLICATE STITCH

