



CROCHET | SKILL LEVEL: **EASY**

## ABBREVIATIONS

**Approx** = Approximately

**Ch** = Chain(s)

**RS** = Right side

**Sc** = Single crochet

**WS** = Wrong side

## MEASUREMENTS

Approx 51" x 59" [129.5 x 150 cm].

## GAUGE

7 sc and 8 rows = 4" [10 cm].

## INSTRUCTIONS

### Notes:

- Use separate balls of yarn for each area of colors in the design.
- When joining colors, work to last 2 loops on hook of first color. Draw new color through last 2 loops and proceed in new color, leaving old color at WS of work.
- Chart is shown on page 2.

## BLANKET

With A, ch 90.

**1st row:** (RS). 1 sc in 2nd ch from hook. 1 sc in each ch to end of chain. Turn. 89 sc.

**2nd row:** Ch 1. 1 sc in each sc to end of row. Turn.

First 2 rows of Chart are complete. Work Chart in sc until 118th row of Chart is complete, reading RS rows from right to left and WS rows from left to right. Fasten off at end of last row.



## MATERIALS

**Bernat® Blanket™** (10.5 oz/300 g; 220 yds/201 m)

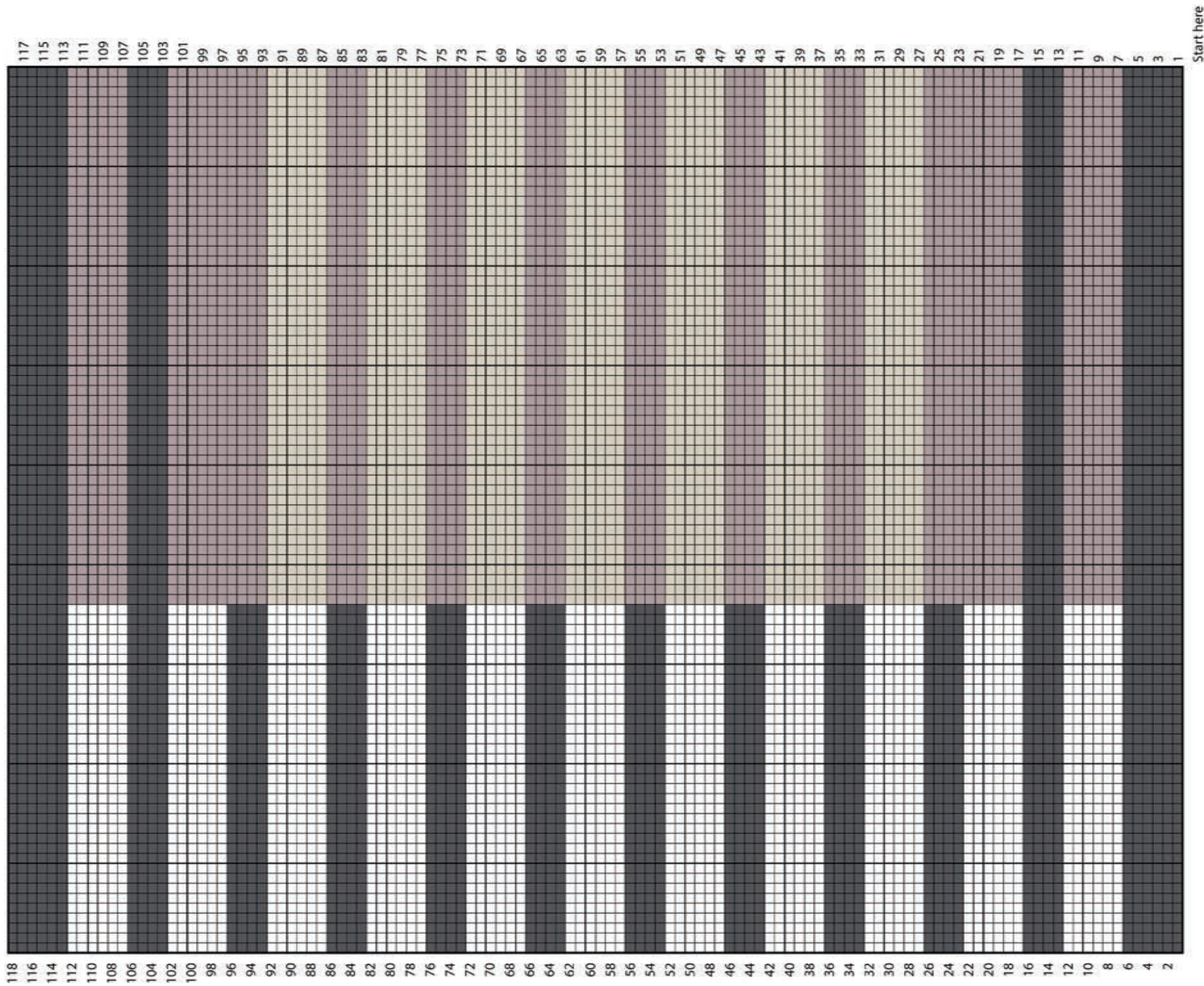
**Contrast A** Lead (10780) **2 balls or 440 yds/402 m**

**Contrast B** Vapor Grey (10960) **2 balls or 440 yds/402 m**

**Contrast C** Vintage White (10006) **2 balls or 323 yds/295 m**

**Contrast D** Almond (10830) **2 balls or 335 yds/306 m**

Size U.S. L/11 (8 mm) crochet hook **or size needed to obtain gauge.**  
Yarn needle.



KEY

- = Contrast A
- = Contrast B
- = Contrast C
- = Contrast D