



CROCHET | SKILL LEVEL: **EASY**

ABBREVIATIONS

Approx =

Approximately

Beg = Beginning

Ch = Chain(s)

Dc = Double crochet

Pat = Pattern

Rep = Repeat

RS = Right side

Sc = Single crochet

Sl st = Slip stitch

Sp(s) = Space(s)

St(s) = Stitch(es)

WS = Wrong side

MEASUREMENTS

Approx 50" x 60" [127 x 152.5 cm], excluding fringe.

GAUGE

7 dc and 4 rows = 4" [10 cm]

INSTRUCTIONS

Note: Rows are worked in pairs in the same direction – work 1 row of A. Return to beg and work 1 row of B.

With A, ch 103 loosely (multiple of 3 ch + 4). See diagram on page 2.

1st row: (RS). With A, 1 sc in 2nd ch from hook. *1 sc in next sc. Ch 2. Skip next 2 ch. Rep from * to last 2 ch. 1 sc in each of last 2 ch. Pull long loop and secure to prevent from unravelling. **Do not** turn.

2nd row: (RS). Join B with sl st to first sc. Ch 4 (counts as dc and ch 1). Skip next sc. *3 dc in next ch-2 sp. Ch 1. Skip next sc. Rep from * to last sc. 1 dc in last sc. Pull long loop and secure to prevent from unravelling. Turn.

3rd row: (WS). Pick up loop of A and pull to maintain height of last row. Sl st in first dc. Ch 1. 1 sc in same sp as sl st. *1 sc in next ch-1 sp. Ch 2. Skip next 3 dc. Rep from * to turning ch 4. 1 sc in each of 4th and 3rd ch of turning ch 4. Pull long loop. **Do not** turn.

4th row: (WS). Pick up loop of B and pull to maintain height of last row. Sl st in first sc. Ch 4 (counts as dc and ch 1). Skip next sc. *3 dc in next ch-2 sp. Ch 1. Skip next sc. Rep from * to last sc. 1 dc in last sc. Pull long loop. Turn.

MATERIALS

Bernat® Casa™ (7.9 oz/225 g; 170 yds/155 m)

Contrast A Turquoise Harbour (22014) **3 balls**

Contrast B Cream (22001) **4 balls**

Size U.S. L/11 (8 mm) crochet hook **or size needed to obtain gauge.**

5th row: (RS). As 3rd row.

6th row: (RS). As 4th row.

Rep 3rd to 6th rows for pat until work from beg measures approx 59½" [151 cm], ending on 3rd row. Turn.

Next row: (RS). With A, ch 1. 1 sc in first sc. 1 sc next sc. *2 sc in next ch-2 sp. 1 sc in next sc. Rep from * to last sc. 1 sc in last sc. Turn. **Do not** fasten off.

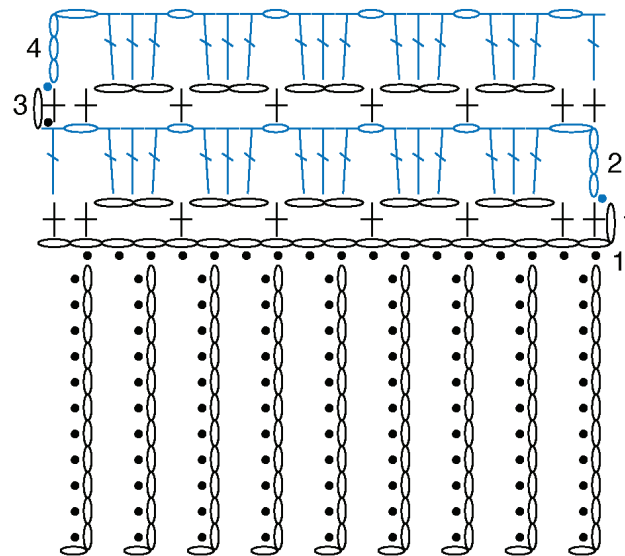
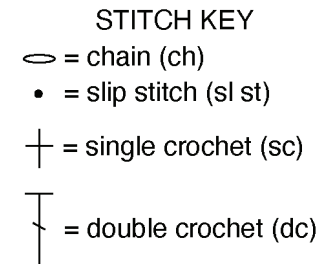
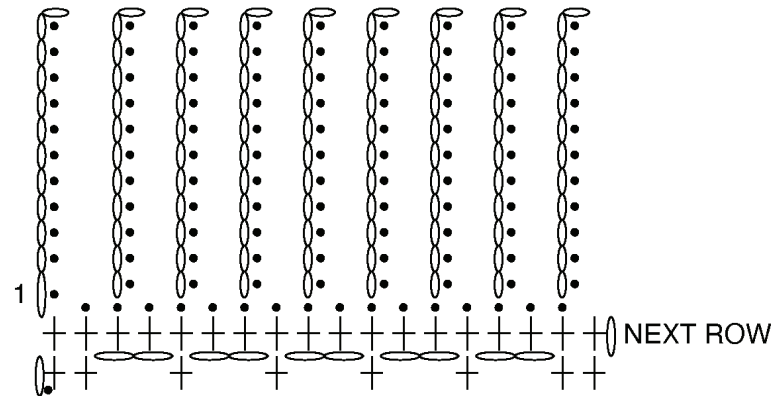
Top Fringe: 1st row: (WS). *With A, ch 12. Sl st in 2nd ch from hook and each of next 10 ch.** Sl st in each of next 2 sc of Blanket. Rep from * to end of row, ending at **. Fasten off.

Bottom Fringe: With WS facing, join A with sl st to first st at foundation ch.

1st row: (WS). *Ch 12. Sl st in 2nd ch from hook and each of next 10 ch.** Sl st in each of next 2 sts of Blanket. Rep from * to end of row, ending at **. Fasten off.

Side edging: (RS). Join A with sl st to top left corner. Ch 1. Work 105 sc evenly across side edge of Blanket. Fasten off.

Rep for other side.



REDUCED SAMPLE OF PATTERN

