



CROCHET | SKILL LEVEL: **INTERMEDIATE**

ABBREVIATIONS

Approx = Approximately

Beg = Beginning

Ch = Chain(s)

Pat = Pattern

Rep = Repeat

Rnd(s) = Round(s)

RS = Right side

Sc = Single crochet

Sl st = Slip stitch

Sp = Space

St(s) = Stitch(es)

Tog = Together

WS = Wrong side

MEASUREMENTS

Approx 52" x 62½" [132 cm x 159 cm] excluding fringe.

GAUGE

10 sts and 10 rows = 4" [10 cm] in pat.

INSTRUCTIONS

Notes:

- Wind balls of the colors to be used, one for each separate area of color in the design.
- To change color, work to last 2 loops on hook and draw new color through last 2 loops and proceed, keeping color change to WS of work

With A, ch 131.

(See diagram on page 3).

1st row: (RS). With A, 1 sc in 2nd ch from hook. (Ch 1. Skip next ch. 1 sc in next ch) 6 times. With B, 1 sc in next ch. (Ch 1. Skip next ch. 1 sc in next ch) 6 times. *With A, 1 sc in next ch. (Ch 1. Skip next ch. 1 sc in next ch) 6 times. With B, 1 sc in next ch. (Ch 1. Skip next ch. 1 sc in next ch) 6 times. Rep from * to end of chain. 130 sts. Turn.

2nd row: With B, ch 1. *With B, 1 sc in next sc. 1 sc in next ch-1 sp. (Ch 1. Skip next sc. 1 sc in next ch-1 sp.) 5 times. 1 sc in next sc. With A, 1 sc in next sc. 1 sc in next ch-1 sp. (Ch 1. Skip next sc. 1 sc in next ch-1 sp) 5 times. 1 sc in next sc. Rep from * to end of row. Turn.

MATERIALS

Bernat® Toasty™ (7.9 oz/225 g; 285 yds/261 m)

Contrast A Shadow (25010) **3 balls**

Contrast B Taupe (25008) **2 balls**

Contrast C Mauve (25006) **2 balls**

Sizes U.S. K/10½ (6.5 mm) crochet hook **or size needed to obtain gauge.**

3rd row: With A, ch 1, *With A, 1 sc in next sc. (Ch 1. Skip next sc. 1 sc in next ch-1 sp) 5 times. Ch 1. Skip next sc. 1 sc in next sc. With B, 1 sc in next sc. (Ch 1. Skip next sc. 1 sc in next ch-1 sp) 5 times. Ch 1. Skip next sc. 1 sc in next sc. Rep from * to end of row. Turn.

4th and 5th rows: Rep last 2 rows once more.

6th row: As 2nd row.

7th row: With C, ch 1. *1 sc in next sc. (Ch 1. Skip next sc. 1 sc in next ch-1 sp) 5 times. Ch 1. Skip next sc. 1 sc in next sc. Rep from * to end of row. Turn.

8th to 13th rows: As 2nd and 3rd rows, 3 times more.

14th row: With A, ch 1. *With A, 1 sc in next sc. 1 sc in next ch-1 sp. (Ch 1. Skip next sc. 1 sc in next ch-1 sp.) 5 times. 1 sc in next sc. With C, 1 sc in next sc. 1 sc in next ch-1 sp. (Ch 1. Skip next sc. 1 sc in next ch-1 sp) 5 times. 1 sc in next sc. Rep from * to end of row. Turn.

15th row: With C, ch 1. *With C, 1 sc in next sc. (Ch 1. Skip next sc. 1 sc in next ch-1 sp) 5 times. Ch 1. Skip next sc. 1 sc in next sc. With A, 1 sc in next sc. (Ch 1. Skip next sc. 1 sc in next ch-1 sp) 5 times. Ch 1.

Skip next sc. 1 sc in next sc. Rep from * to end of row. Turn.

16th to 19th rows: As 14th and 15 rows, twice more.

20th row: With B, ch 1. *1 sc in first sc. 1 sc in next ch-1 sp. (Ch 1. Skip next sc. 1 sc in next ch-1 sp) 5 times. 1 sc in next sc. Rep from * to end of row. Turn.

21st row: With C, ch 1. *With C, 1 sc in next sc. (Ch 1. Skip next sc. 1 sc in next ch-1 sp) 5 times. Ch 1. Skip next sc. 1 sc in next sc. With A, 1 sc in next sc. (Ch 1. Skip next sc. 1 sc in next ch-1 sp) 5 times. Ch 1. Skip next sc. 1 sc in next sc. Rep from * to end of row. Turn.

22nd row: With A, ch 1. *With A, 1 sc in next sc. 1 sc in next ch-1 sp. (Ch 1. Skip next sc. 1 sc in next ch-1 sp.) 5 times. 1 sc in next sc. With C, 1 sc in next sc. 1 sc in next ch-1 sp. (Ch 1. Skip next sc. 1 sc in next ch-1 sp) 5 times. 1 sc in next sc. Rep from * to end of row. Turn.

23rd to 26 rows: As 21st and 22nd rows, twice more.

27th row: With A, ch 1. *With A, 1 sc in next sc. (Ch 1. Skip next sc. 1 sc in next ch-1 sp) 5 times. Ch 1. Skip next sc. 1 sc in next sc. With B, 1 sc in next sc. (Ch 1. Skip next sc.

1 sc in next ch-1 sp) 5 times. Ch 1. Skip next sc. 1 sc in next sc. Rep from * to end of row. Turn.

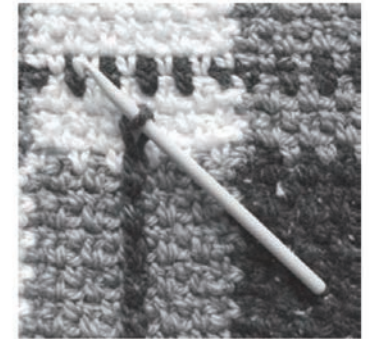
Rep 2nd to 27th rows 4 times more, then 2nd to 26th rows once. Fasten off.

Vertical Surface Sl St Lines:

With RS facing, join B with sl st to center ch-1 sp of first A section at foundation row Blanket. Keeping yarn at back (WS) of work, sl st into each ch-1 sp in alternate rows above to create a straight vertical line of surface sl sts up to top edge of Blanket. Take care to sl st loosely to avoid pulling in work as you stitch. Fasten off.

With B, rep Vertical Sl St Line beg in center of each A section at foundation row (5 vertical lines in B).

With C, rep Vertical Sl st Line beg in center of each B section at foundation row (5 vertical lines in C).

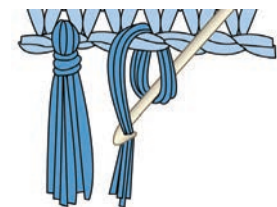


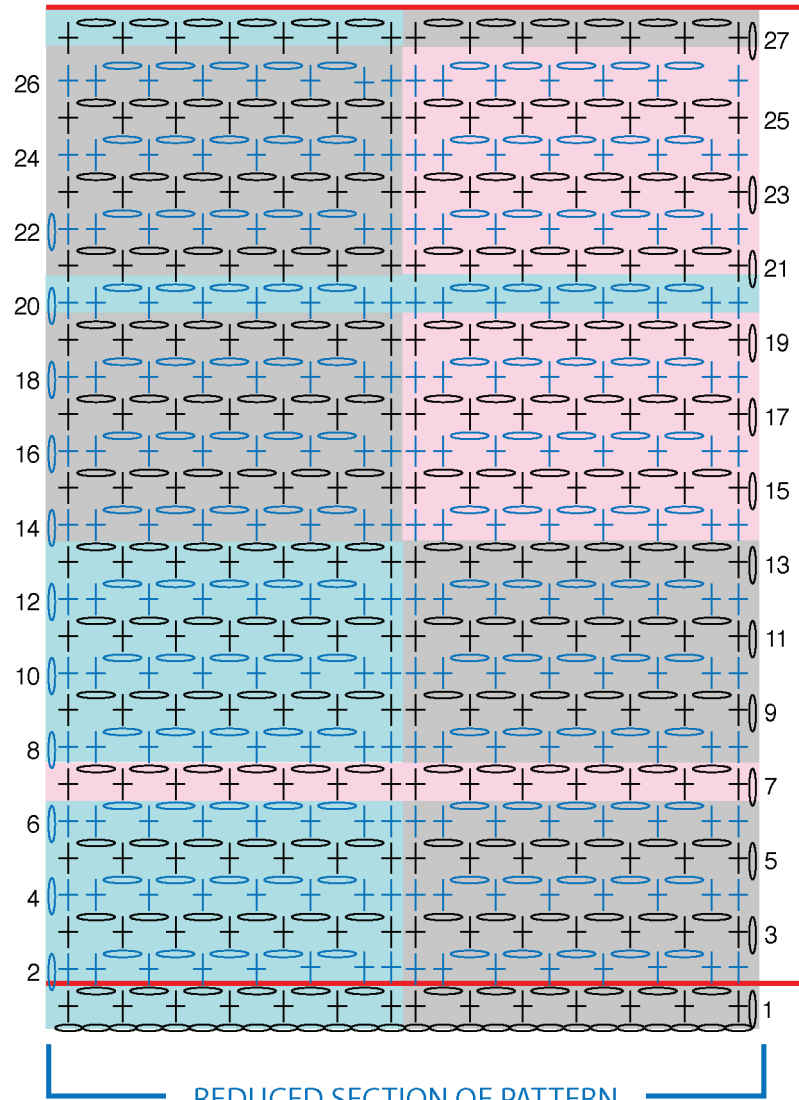
Border: Join A with sl st to top right corner of Blanket.

1st rnd: Ch 1. Work sc evenly around Blanket working 3 sc in each corner. Join with sl st to first sc.

2nd rnd: Ch 1. 1 sc in each sc around, working 3 sc in each corner. Join with sl st to first sc.

Fringe: Cut lengths of A, B, and C approx 18" [45.75 cm]. Taking 2 strands tog, fold strands in half and knot into fringe at top and bottom edges of Blanket, matching colors to color changes Blanket. Trim fringe evenly.





COLOR KEY

- = Contrast A
- = Contrast B
- = Contrast C

REPEAT

REDUCED SECTION OF PATTERN