

## BERNAT® CELTIC TEXTURE CROCHET BLANKET



CROCHET | SKILL LEVEL: INTERMEDIATE

### ABBREVIATIONS

**Approx** = Approximately

**Beg** = Beginning

**Ch** = Chain(s)

**Dc** = Double crochet

**Hdc** = Half double crochet

**Trbp** = (Yoh) twice and draw up a loop around post of next stitch at back of work, inserting hook from right to left. (Yoh and draw through 2 loops on hook) 3 times.

**Trfp** = (Yoh) twice and draw up a loop around post of next stitch at front of work, inserting hook from right to left. (Yoh and draw through 2 loops on hook) 3 times.

**Pat** = Pattern

**Rep** = Repeat

**RS** = Right side

**Sl st** = Slip stitch

**St(s)** = Stitch(es)

**WS** = Wrong side

**Yoh** = Yarn over hook

### MEASUREMENTS

Approx 39" x 49" [99 x 124.5 cm], excluding fringe.

### GAUGE

7 sc and 8 rows = 4" [10 cm]

### INSTRUCTIONS

**Note:** Ch 3 at beg of row counts as dc.

With B, ch 82.

**1st row:** (WS). 1 hdc in 3rd ch from hook and each ch to end of chain. Turn. 80 hdc. Fasten off.

**2nd row:** (RS). Join A with sl st to first hdc. Ch 3. 1 dc in next hdc. \*Skip next 2 hdc. 1 trfp around each of next 2 hdc. *Working in front of just worked sts*, 1 trfp around each of 2 skipped hdc. Rep from \* to last 2 hdc. 1 dc in each of last 2 hdc. Turn.



### MATERIALS

**Bernat® Blanket™** (10.5 oz/300 g; 220 yds/201 m)

**Contrast A** Vintage White (10006) **8 balls**

**Contrast B** Dark Gray (10044) **1 ball**

Size U.S. L/11 (8 mm) crochet hook **or size needed to obtain gauge.**

## BERNAT® CELTIC TEXTURE CROCHET BLANKET

**3rd row:** Ch 3. 1 dc in next dc. 1 trbp around each of next 2 sts. \*Skip next 2 sts. 1 trbp around each of next 2 sts. *Working behind just worked sts*, 1 trbp around each of 2 skipped sts. Rep from \* to last 4 sts. 1 trbp around each of next 2 sts. 1 dc in each of last 2 dc. Turn.

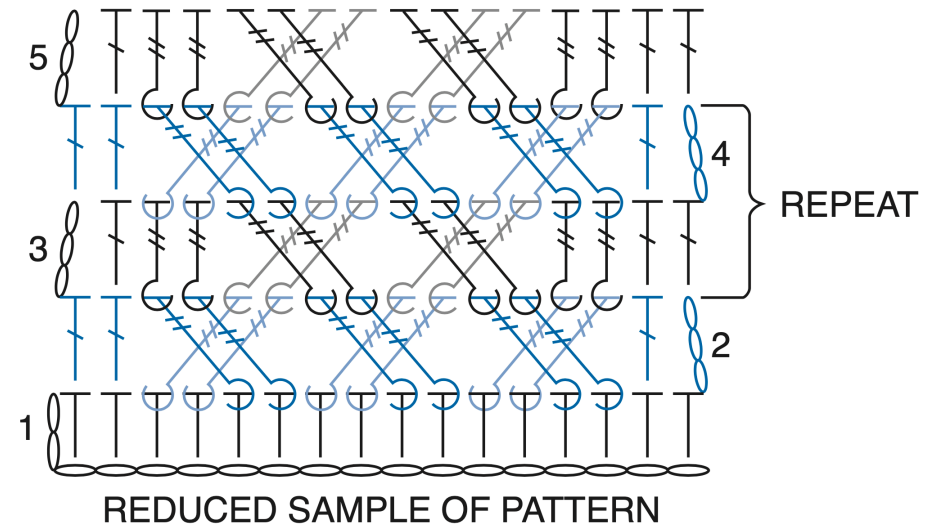
**4th row:** Ch 3. 1 dc in next dc. \*Skip next 2 sts. 1 trfp around each of next 2 sts. *Working in front of just worked sts*, 1 trfp around each of 2 skipped sts. Rep from \* to last 2 sts. 1 dc in each of last 2 dc. Turn.

Rep last 2 rows for Celtic Texture Pat until work from beg measures approx 49" [124.5 cm], ending on 4th row. Fasten off A.



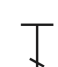


**Next row:** (WS). Join B with sl st to first st. Ch 2. 1 hdc in each st to end of row. **Do not** fasten off. **Turn.**

**Top Edge Twisted Fringe:** With B, ch 1. \*Draw up a loop 10" [25.5 cm] long. Twist loop 30 times. Sl st in same st, allowing twisted loop to coil around itself. Sl st in next hdc. Rep from \* to end of row. Fasten off.

**Bottom Edge Twisted Fringe:** With RS facing, join B with sl st to first loop of foundation ch. Work as given for Top Edge Twisted Fringe.



### STITCH KEY

-  = chain (ch)
-  = half double crochet (hdc)
-  = double crochet (dc)
-  = front post treble crochet (trfp)
-  = back post treble crochet (trbp)