

## BERNAT® WOODLAND BUNNY CROCHET BLANKET



### MATERIALS

**Bernat® Baby Sport™** (12.3 oz/350 g; 1256 yds/1148 m)

Baby Gray (21048)

**2 balls**

Size U.S. 7 (4.5 mm) crochet hook **or size needed to obtain gauge.**  
Stitch marker.



CROCHET | SKILL LEVEL: **EASY**

### ABBREVIATIONS

**Approx** = Approximately

**Beg** = Begin(ning)

**Ch** = Chain(s)

**Cont** = Continue(ity)

**Hdc** = Half double crochet

**Pat** = Pattern

**PM** = Place marker

**Rep** = Repeat

**Rnd(s)** = Round(s)

**RS** = Right side

**Sc** = Single crochet

**Sl st** = Slip stitch

**Sp(s)** = Space(s)

**St(s)** = Stitch(es)

**Tr** = Treble crochet

**WS** = Wrong side

### MEASUREMENTS

Approx 32" x 37" [81.5 x 94 cm].

### GAUGE

15 sc and 18 rows = 4" [10 cm].

### INSTRUCTIONS

**Note:** Ch 2 at beg of row **does not** count as hdc.

When working tr always push post of tr to front of work to create a bobble.

Ch 129.

**Foundation row:** (WS). 1 hdc in 3rd ch from hook. 1 hdc in each ch to end of chain. 127 hdc. Turn.

**1st row:** Ch 1. 1 sc in each of first 2 hdc. \*1 tr in next hdc, pushing

post of tr to front of work to create bobble. 1 sc in next hdc. Rep from \* to last 3 hdc. 1 tr in next hdc. 1 sc in each of last 2 hdc. Turn.

**2nd row:** Ch 2. 1 hdc in first st. 1 hdc in each st to end of row. Turn.

**3rd row:** Ch 1. 1 sc in first hdc. \*1 tr in next hdc. 1 sc in next hdc. Rep from \* to last 2 hdc. 1 tr in next hdc. 1 sc in last hdc. Turn.

**4th row:** As 2nd row.

Last 4 rows form Bottom Border pat.

Cont in Bottom Border pat until work from beg measures approx 4" [10 cm], ending on 4th row of pat.

## BERNAT® WOODLAND BUNNY CROCHET BLANKET

Proceed in Side Border pat as follows:

**1st row:** (RS). Ch 1. 1 sc in each of first 2 hdc. (1 tr in next hdc. 1 sc in next hdc) 6 times. 1 tr in next hdc. 1 sc in each hdc to last 15 hdc. (1 tr in next hdc. 1 sc in next hdc) 7 times. 1 sc in last hdc. Turn.

**2nd row:** Ch 2. 1 hdc in first st. 1 hdc in each st to end of row. Turn.

**3rd row:** Ch 1. 1 sc in first hdc. (1 tr in next hdc. 1 sc in next hdc) 7 times. 1 sc in each hdc to last 14 hdc. (1 tr in next hdc. 1 sc in next hdc) 7 times. Turn.

**4th row:** As 2nd row.

Last 4 rows form Side Border pat. Cont in Side Border pat until work from beg measures approx 6" [15 cm], ending on 4th row of pat.

Place Chart as follows (see page 3):

**1st row:** (RS). Ch 1. 1 sc in each of first 2 hdc. (1 tr in next hdc. 1 sc in next hdc) 6 times. 1 tr in next hdc. 1 sc in each of next 15 hdc. Work 1st row of Chart across next 67 hdc, *reading row from right to left*. 1 sc in each of next 15 hdc. (1 tr in next hdc. 1 sc in next hdc) 7 times. 1 sc in last hdc. Turn.

**2nd row:** Ch 2. 1 hdc in each of first 30 sts. Work 2nd row of Chart across next 67 sts, *reading row from left to right*. 1 hdc in each of last 30 sts. Turn.

**3rd row:** Ch 1. 1 sc in first hdc. (1 tr in next hdc. 1 sc in next hdc) 7 times. 1 sc in each of next 15 hdc. Work 3rd row of Chart across next 67 hdc. 1 sc in each of next 16 hdc. (1 tr in next hdc. 1 sc in next hdc) 7 times. Turn.

**4th row:** Ch 2. 1 hdc in each of first 30 sts. Work 4th row of Chart across next 67 sts. 1 hdc in each of last 30 sts. Turn.

Chart and Side Border pat are now in position.

Cont in Chart and Side Border pat to end of chart. PM at end of last row.

**Next row:** (WS). Ch 2. 1 hdc in first st. 1 hdc in each st to end of row. Turn.

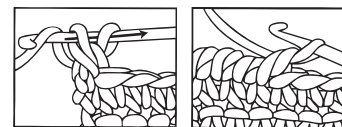
Cont in Side Border pat only until work from marked row measures approx 2" [5 cm], ending on 2nd row of pat.

Rep 1st to 4th rows of Bottom Border pat until work from marked row measures approx 6" [15 cm], ending on 2nd row of pat. Fasten off.

### Edging

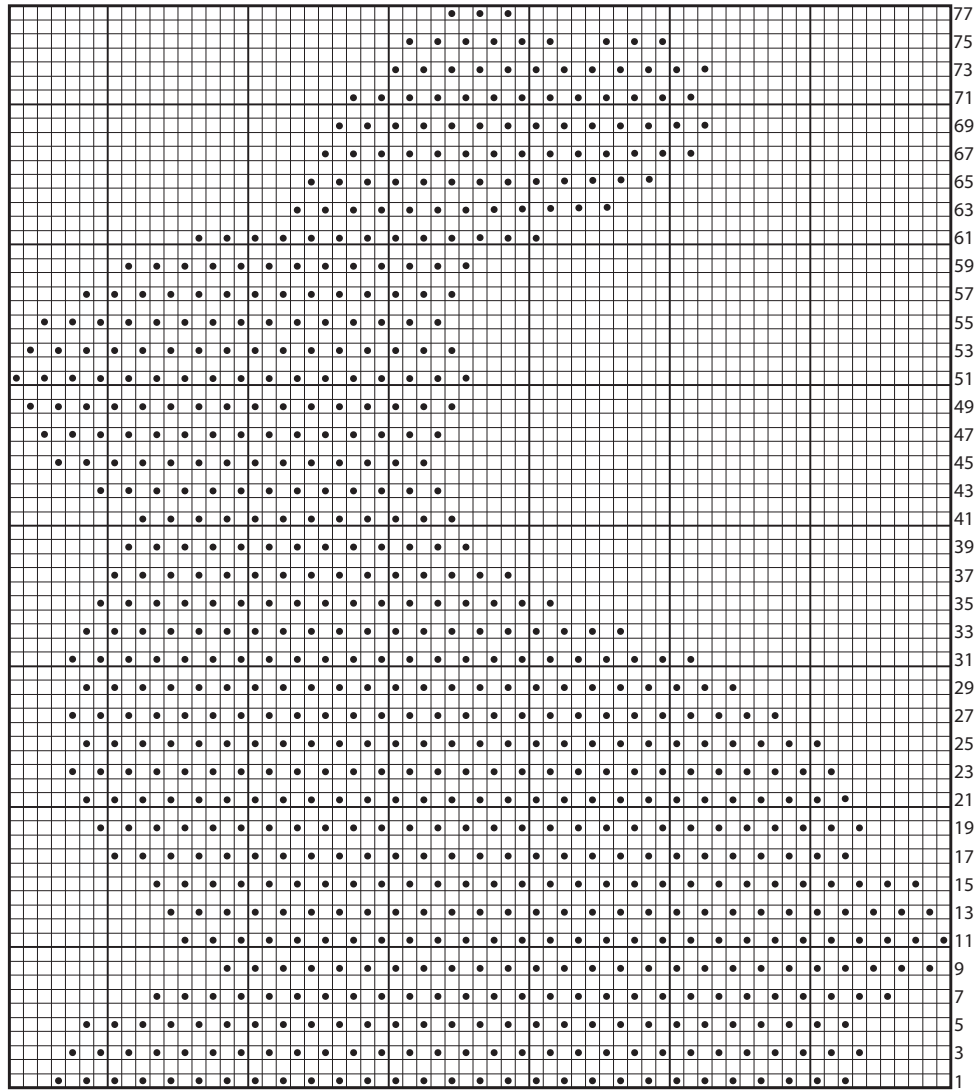
**1st rnd:** (RS). Join yarn with sl st to top right corner of Blanket. Ch 2. 3 hdc in same sp as sl st. Work 1 rnd of hdc evenly around edge, working 3 hdc in each corner. Join with sl st to first hdc.

**2nd rnd:** Ch 1. *Working from left to right, instead of from right to left*, as usual, work 1 reverse sc in each hdc around. Join with sl st to first sc. Fasten off.



Reverse Sc





Key

- = 1 sc on RS rows. 1 hdc on WS rows.
- ▣ = 1 tr on RS rows