



MATERIALS

Bernat® Blanket™ (10.5 oz/300 g; 220 yds/201 m)

Almond (10830)

7 balls or 1425 yds/1303 m

Size U.S. L/11 (8 mm) crochet hook **or size needed to obtain gauge.**



CROCHET | SKILL LEVEL: **INTERMEDIATE**

ABBREVIATIONS

Approx = Approximately

Beg = Begin(ning)

Ch = Chain(s)

Dc = Double crochet

Pat = Pattern

Rep = Repeat

RS = Right side

Sc = Single crochet

Sl st = Slip stitch

Sp(s) = Space(s)

St(s) = Stitch(es)

WS = Wrong side

MEASUREMENTS

Approx 44" x 60" [112 x 152.5 cm],
excluding fringe

GAUGE

7 sc and 8 rows = 4" [10 cm].

10 sts and 8 rows = 4" [10 cm] in
Herringbone Pat.

Ch 110. See diagram on page 3.

1st row: (RS). 1 sc in 2nd ch from
hook. *Ch 1. Skip next ch. 1 sc in
next ch. Rep from * to end of chain.
Turn. 109 sts (55 sc).

2nd row: Ch 1. 1 sc in first sc. *Ch 1.
Skip next ch-1 sp. 1 sc in next sc.
Rep from * to end of row. Turn.

INSTRUCTIONS

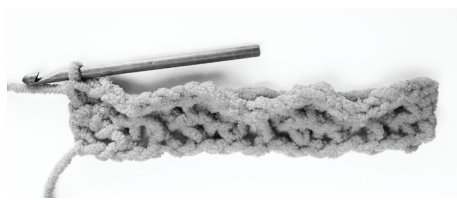
BLANKET

Notes:

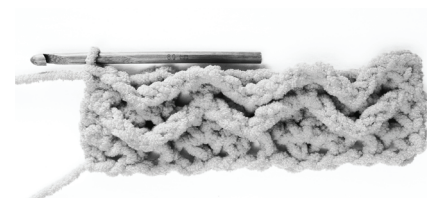
- Worked over foundation ch multiple of 6 ch + 8.
- **Do not** work around sts or chains from previous row(s) when working into sts 2 or 3 rows below.



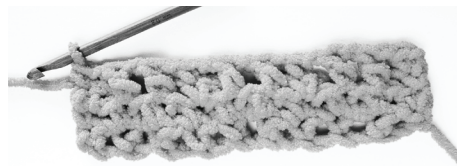
3rd row: Ch 1. 1 sc in first sc. *Ch 3. Skip all of next: (Ch-1 sp. 1 sc). Sl st in next ch-1 sp 2 rows below (1st row). Ch 3. Skip all of next: (1 sc. Ch-1 sp). 1 sc in next sc. Rep from * to end of row. Turn.



5th row: (RS). Ch 1. 1 sc in first sc. *Ch 3. Skip all of next (Ch-1 sp. 1 dc). Sl st in next ch-1 sp 3 rows below (2nd row). Ch 3. Skip all of next (1 dc. Ch-1 sp). 1 sc in next sc. Rep from * to end of row. Turn.



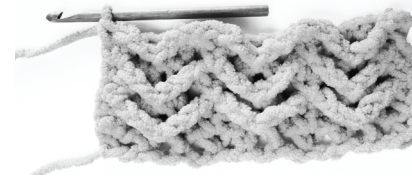
4th row: Ch 1. 1 sc in first sc. *Working into 2 rows below (2nd row) [(Ch 1. Skip next ch-1 sp. 1 dc in next sc) twice. Ch 1. Skip next ch-1]. Working into last row (3rd row), 1 sc in next sc. Rep from * to end of row. Turn.



6th row: (WS). Ch 1. 1 sc in first sc. *Working into 2 rows below (4th row) [(Ch 1. Skip next ch-1 sp. 1 dc in next dc) twice. Ch 1. Skip next ch-1 sp]. Working into last row (5th row), 1 sc in next sc. Rep from * to end of row. Turn.



Rep last 2 rows for Herringbone Pat until work from beg measures 52" [132 cm], ending on a WS row. Fasten off.



Top Edging: 1st row: (RS). Join yarn with sl st to top right corner of Blanket. Ch 1. Work sc evenly across top edge of Blanket. Turn.

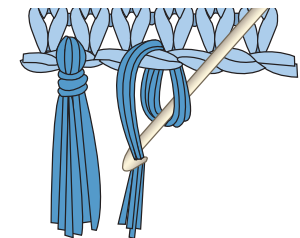
2nd row: Ch 1. 1 sc in each sc to end of row. Turn.

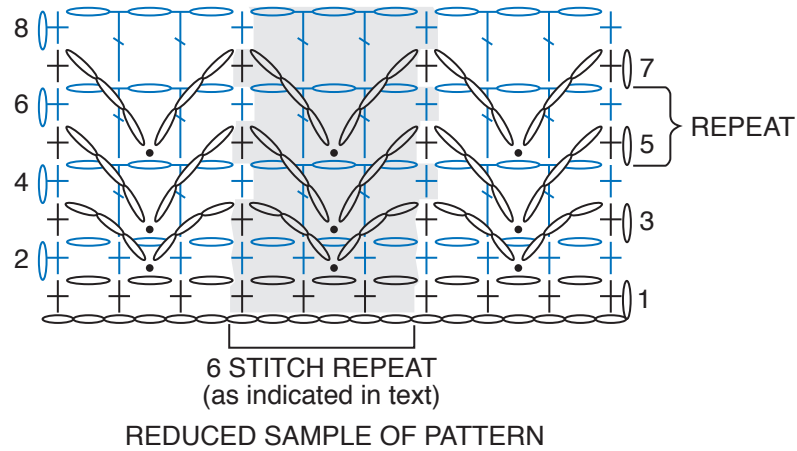
Rep last row until Top Edging measures 4" [10 cm]. Fasten off.

Bottom Edging: Work as for Top Edging across bottom edge of Blanket.

Blanket Trim: 1st rnd: (RS). Join yarn with sl st to any corner. Ch 1. Work 1 rnd of sc evenly around edge of Blanket, having 3 sc in each corner. Join with sl st to first sc. Fasten off.

Fringe: Cut lengths of yarn 14" [35.5 cm] long. Taking 1 strand, knot into fringe in each st along top and bottom edges of Blanket (as shown in photo). Trim fringe evenly.





- STITCH KEY
- = chain (ch)
 - = slip stitch (sl st)
 - ⊥ = single crochet (sc)
 - ⌋ = double crochet (dc)

