



## MATERIALS

**Bernat® Maker Home Dec™** (8.8 oz/250 g; 317 yds/290 m)  
Clay (11008) **8 balls or 2385 yds/2170 m**

Size U.S. L/11 (8 mm) crochet hook **or size needed to obtain gauge.**

## ABBREVIATIONS:

**Alt** = Alternate

**Approx** = Approximate(ly)

**Beg** = Begin(ning)

**Ch** = Chain(s)

**Cont** = Continue(ity)

**Dc** = Double crochet

**Dcftp** = Yoh and draw up a loop around post of indicated stitch, inserting hook from front to back to front. (Yoh and draw through 2 loops on hook) twice

**Pat** = Pattern

**Rep** = Repeat

**RS** = Right side

**Sc** = Single crochet

**Sp(s)** = Space(s)

**St(s)** = Stitch(es)

**Tog** = Together

**Tr** = Treble crochet

**Trfp** = (Yoh) twice and draw up a loop around post of indicated stitch, inserting hook from front to back to front. (Yoh and draw through 2 loops on hook) 3 times.

**WS** = Wrong side

**Yoh** = Yarn over hook

 CROCHET | SKILL LEVEL: INTERMEDIATE

## MEASUREMENTS

Approx 44" [112 cm] wide x 57" [145 cm] long.

## GAUGE

10 sc and 11 rows = 4" [10 cm].

## INSTRUCTIONS

**Cable Panel Pat** (worked over 16 sts). See chart on page 3.

**1st row:** (RS). 1 sc in each of next 2 sc. (1 dcftp around post of next st 2 rows below) twice. 1 sc in each of next 2 sc. Skip next 2 sts.

(1 trfp around post of next st 2 rows below) twice. *Working behind 2 trfp just made*, 1 trfp around post of each of 2 skipped sts 2 rows below. 1 sc in each of next 2 sc. (1 dcftp around post of next st 2 rows below) twice. 1 sc in each of next 2 sc.

**2nd and alt rows:** 1 sc in each of next 16 sts.

**3rd row:** 1 sc in each of next 2 sc. (1 dcftp around post of next st 2 rows below) twice. 1 sc in each of next 2 sc. (1 dcftp around post of next st 2 rows below) 4 times.

1 sc in each of next 2 sc. (1 dcfp around post of next st 2 rows below) twice. 1 sc in each of next 2 sc.

**5th row:** As 1st row.

**7th row:** 1 sc in each of next 3 sc. (1 trfp around post of next dcfp 2 rows below) twice. (1 trfp around post of next trfp 2 rows below) twice. 1 sc in each of next 2 sc. (1 trfp around post of next trfp 2 rows below) twice. (1 trfp around post of next dcfp 2 rows below) twice. 1 sc in each of next 3 sc.

**9th row:** 1 sc in each of next 3 sc. Skip next 2 sts. (1 trfp around post of next trfp 2 rows below) twice. *Working behind 2 trfp just made*, 1 trfp around post of each of 2 skipped sts 2 rows below. 1 sc in each of next 2 sc. Skip next 2 sts. (1 trfp around post of next trfp 2 rows below) twice. *Working in front of 2 trfp just made*, 1 trfp around post of each of 2 skipped sts 2 rows below. 1 sc in each of next 3 sc.

**11th row:** 1 sc in each of next 2 sc. (1 trfp around post of next trfp 2 rows below) twice. 1 sc in each of next 2 sc. (1 trfp around post of next trfp 2 rows below) 4 times.

1 sc in each of next 2 sc. (1 trfp around post of next trfp 2 rows below) twice. 1 sc in each of next 2 sc.

**13th row:** As 3rd row.

**14th row:** As 2nd row.

These 14 rows form Cable Panel Pat.

## BLANKET

Ch 120. See chart on page 3.

**Set up row 1:** (WS). 1 dc in 4th ch from hook (counts as 2 dc). 1 dc in each ch to end of chain. Turn. 118 dc.

**Set up row 2:** Ch 1. 1 sc in first dc. (1 dcfp around post of next dc) twice. 1 sc in each of next 3 dc. Ch 1. Skip next dc. \*1 sc in each of next 4 dc. (1 dcfp around post of next dc) twice. 1 sc in each of next 2 dc. (1 dcfp around post of next dc) 4 times. 1 sc in each of next 2 dc. (1 dcfp around post of next dc) twice. 1 sc in each of next 4 dc. Ch 1. Skip next dc. Rep from \* 4 times more. 1 sc in each of next 3 dc. (1 dcfp around post of next dc) twice. 1 sc in last dc. Turn.

**Set up row 3:** Ch 1. 1 sc in each st and ch-1 sp to end of row. Turn.

Proceed in pat as follows:

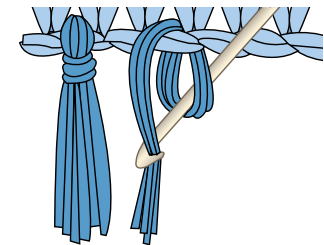
**1st row:** (RS). Ch 1. 1 sc in first sc. (1 dcfp around post of next dcfp 2 rows below) twice. 1 sc in next sc. \**Working in front of row*, 1 tr in next skipped sc 2 rows below. Skip next sc (behind tr). 1 sc in next sc. Ch 1. Skip next sc. 1 sc in next sc. *Working in front of row*, 1 tr in same skipped sc 2 rows below as last tr. Skip next sc (behind tr).\*\* Work 1st row of Cable Panel Pat across next 16 sc. Rep from \* 4 times more, then from \* to \*\* once. 1 sc in next sc. (1 dcfp around post of next dcfp 2 rows below) twice. 1 sc in last sc. Turn.

**2nd row:** Ch 1. 1 sc in each st and ch-1 sp to end of row. Turn. These 2 rows form V Texture pat. Cable Panel Pat is now in position.

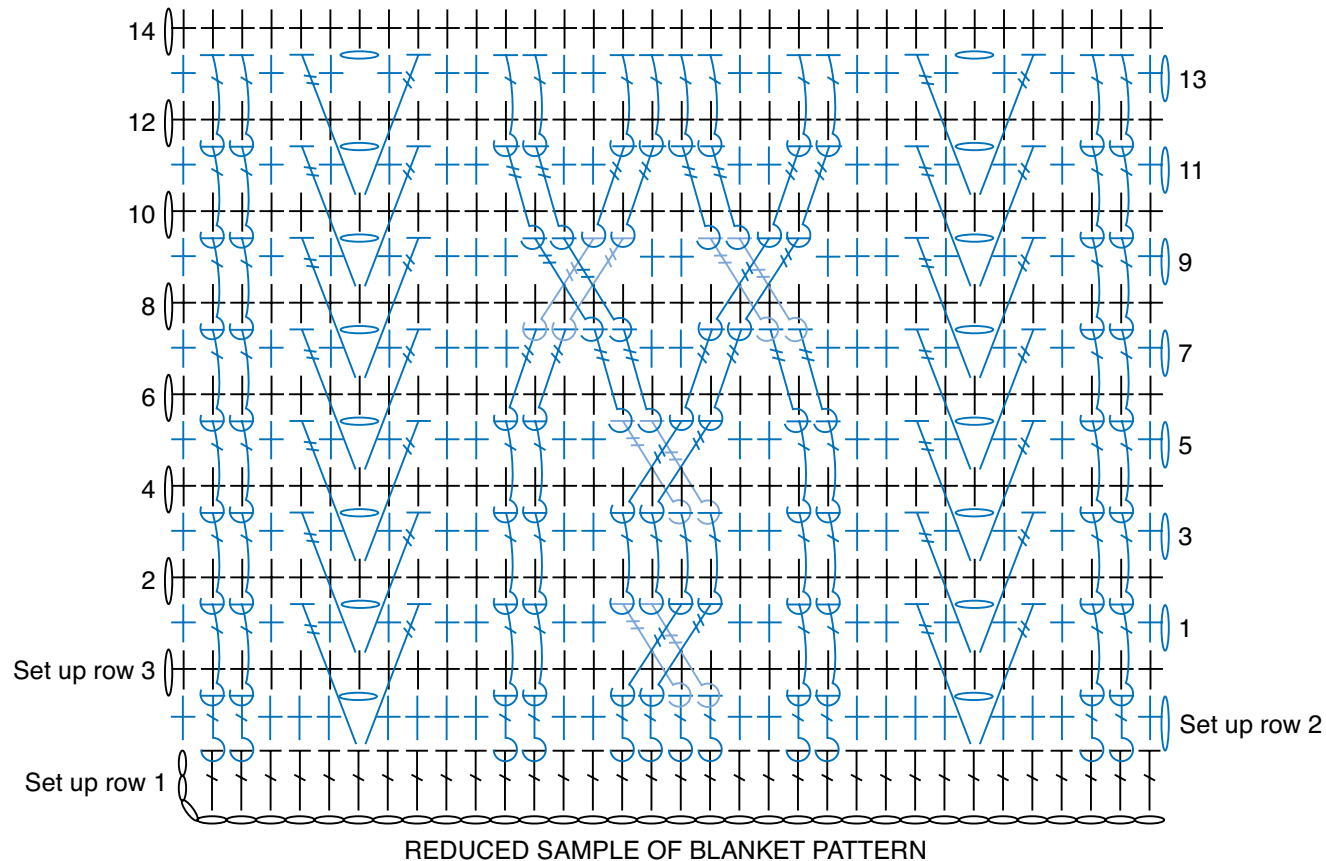
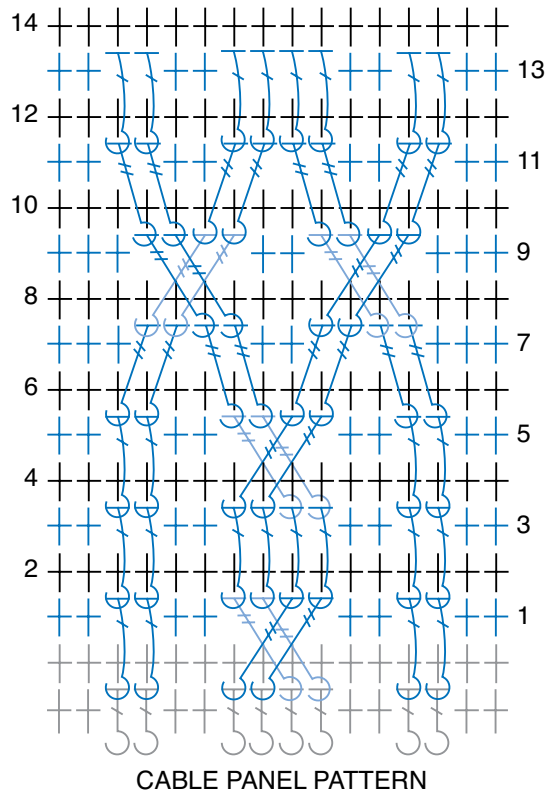
Cont in pat (as placed in last rows) until Blanket measures approx 56½" [143.5 cm], ending on a 1st row of Cable Panel Pat.

**Last row:** (WS). Ch 3 (counts as dc). 1 dc in each st or ch-1 sp to end of row. Fasten off.

**Fringe:** Cut lengths of yarn 18" [45.5 cm] long. Taking 3 strands tog, knot into fringe evenly across each end of Blanket. Trim fringe evenly.



## BERNAT® CROCHET CABLEWORK BLANKET | CROCHET



### STITCH KEY

- ↪ = chain (ch)
- ⊕ = single crochet (sc)
- ⊥ = double crochet (dc)
- ⊥ = treble crochet (tr)
- ⌋ = front post double crochet (dcfp)
- ⌋ = front post treble crochet (trfp)