



CROCHET | SKILL LEVEL: **EASY**

ABBREVIATIONS

Approx = Approximately

Inc = Increase(ing)

K = Knit

Pat = Pattern

PM = Place marker

Rep = Repeat

RS = Right side

Sl2 = Slip next 2 stitches knitwise

SM = Slip marker

Ssk = Slip next 2 stitches knitwise one at a time. Pass them back onto left-hand needle, then knit through back loops together.

St(s) = Stitch(es)

WS = Wrong side

Yo = Yarn over

MEASUREMENTS

Approx 33" x 36" [84 x 91.5 cm].

Finished size of motif

Approx 5½" x 6½" [14 x 16.5 cm].

GAUGE

13 sc and 14 rows = 4" [10 cm].

INSTRUCTIONS

Note: To change colors, work to last 2 loops on hook. Draw loop of next color through 2 loops on hook to complete st and proceed in next color.

Reindeer Granny Motif (Make 9)
With D, ch 2. See chart on page 3.

1st rnd: 8 sc in 2nd ch from hook. Join with sl st to first sc.

2nd rnd: Ch 1. 2 sc in each of next 3 sc. (1 hdc. 1 dc) in next sc. (1 dc. 1 hdc) in next sc. 2 sc in each of last 3 sc. Join with sl st to first sc.

3rd rnd: Ch 1. 1 sc in each of first 7 sts. (1 hdc. 1 dc) in next sc. (1 dc. 1 hdc) in next dc. 1 sc in each of last 7 sts. Join with sl st to first sc.

4th rnd: Ch 1. 2 sc in first sc. 1 sc in each of next 6 sc. (1 hdc. 1 dc) in next st. (2 dc in next st) twice. (1 dc. 1 hdc) in next st. 1 sc in each of next 6 sc. 2 sc in last sc. Join B with sl st to first sc.

MATERIALS

Bernat® Super Value™ (7 oz/197g; 440 yds/402 m)

Main Color (MC) Berry (00607) **2 balls**

Contrast A Lush (53246) **2 balls**

Contrast B White (07391) **2 balls**

Contrast C Taupe (53012) **1 ball**

Contrast D Topaz (53514) **1 ball**

Small amount of Black (07421) as E for eyes.

Size U.S. H/8 (5 mm) crochet hook **or size needed to obtain gauge.** Tapestry needle. Optional: Red fleece fabric for lining (approx 33½" x 36½" [85 x 92.5 cm]). Rotary cutter and skip stitch blade.

5th rnd: With B, ch 1. 1 sc in each of first 2 sc. (*With B, 1 dc. With C, 1 dc. Ch 2. 1 dc. With B, 1 dc*) in next sc – Antler corner made. With B, 1 hdc in next sc. 1 sc in each of next 4 sc. 1 hdc in next st. (*2 dc. Ch 2. 2 dc*) in next st – corner made. 1 sc in each of next 4 sts. (*2 dc. Ch 2. 2 dc*) in next st. 1 hdc in next st. 1 sc in each of next 4 sc. 1 hdc in next sc. Antler corner in next sc.

1 sc in each of last 2 sc. Join with sl st to first sc.

6th rnd: Ch 3 (counts as dc). *Working in back loops only*, 1 dc in each st around, working (*2 dc. Ch 2. 2 dc*) in ch-2 sps. Join MC with sl st to top of ch 3.

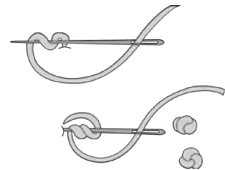
7th rnd: With MC, ch 3 (counts as dc). *Working in both loops*, 1 dc in each st around, working (*2 dc. Ch 2. 2 dc*) in ch-2 sps. Join A with sl st to top of ch 3.

8th rnd: With A, ch 1. 1 sc in each dc around, working (*2 sc. Ch 2. 2 sc*) in ch-2 sps. Join with sl st to first sc. Fasten off.

Reindeer Nose (With C, make 8. With MC, make 1)
Ch 2.

1st rnd: 10 sc in 2nd ch from hook. Join with sl st to first sc. Fasten off, leaving a long end to sew to reindeer head.

With E, make 2 eyes using French knot stitch.



Solid Granny Motif

Make 8 Motifs having MC as Color 1. Make 8 Motifs having A as Color 1.

With Color 1, ch 4. Join with sl st to first ch to form a ring. See chart on page 3.

1st rnd: Ch 3 (counts as dc). 11 dc in ring. Join with sl st to top of ch 3. 12 dc.

2nd rnd: Ch 3. 1 dc in same sp as last sl st (counts as 2 dc). 2 dc in each dc around. Join with sl st to top of ch 3. 24 dc.

3rd rnd: Ch 5. 1 dc in first dc (counts as dc, ch 2, dc). *1 dc in each of next 4 dc. (1 dc. Ch 2. 1 dc) in next dc. 1 dc in each of next 6 dc. (1 dc. Ch 2. 1 dc) in next dc. Rep from * once more. Join with sl st to 3rd ch of ch 5.

4th rnd: Ch 3 (counts as dc). (2 dc. Ch 2. 2 dc) in same sp as sl st. *1 dc in each dc to next ch-2 sp. (2 dc. Ch 2. 2 dc) in corner ch-2 sp. Rep from * twice more. 1 dc in each dc to end of rnd. Join B with sl st to top of ch 3. Break Color 1.

5th rnd: With B, ch 3 (counts as dc). *1 dc in each dc to next ch-2 sp. (2 dc. Ch 2. 2 dc) in corner ch-2 sp. Rep from * 3 times more. 1 dc in each dc to end of rnd. Join A with sl st to top of ch 3.

6th rnd: With A, ch 1. 1 sc in same sp as sl st. *1 sc in each dc to next ch-2 sp. (2 sc. Ch 2. 2 sc) in corner ch-2 sp. Rep from * 3 times more. 1 sc in each dc to end of rnd. Join with sl st to first sc. Fasten off.

FINISHING

Arrange 9 Reindeer Motifs 3 x 3, having Rudolf Motif in the center (see photo).

Alternate MC and A Solid Granny Motifs around Reindeer Motifs.

Join Motifs into Strips: With WS of motifs tog, join A with sl st to corner ch-2 sp. Ch 1. *Working through both thicknesses*, 1 sc in each sc to next corner ch-2 sp. Fasten off.

Join Strips into Blanket: With WS of strips tog, join A with sl st to corner ch-2 sp. Ch 1. *Working through both thicknesses*, 1 sc in each sc to end of strips. Fasten off.

Border: Join A with sl st to corner ch-2 sp.

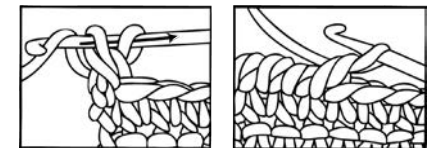
1st rnd: Ch 1. Work 1 sc in each sc, having (2 sc. Ch 2. 2 sc) in corner ch-2 sps. Join with sl st to first sc.

****2nd rnd:** As 1st rnd. Join B. Fasten off A.

3rd and 4th rnds: With B, as 1st rnd. Join MC at end of 3rd rnd.

5th and 6th rnds: With MC, as 1st rnd.

7th rnd: Ch 1. *Working from left to right instead of right to left as usual*, work 1 reverse sc in each sc around, having 3 reverse sc in corners. Join with sl st to first sc. Fasten off.

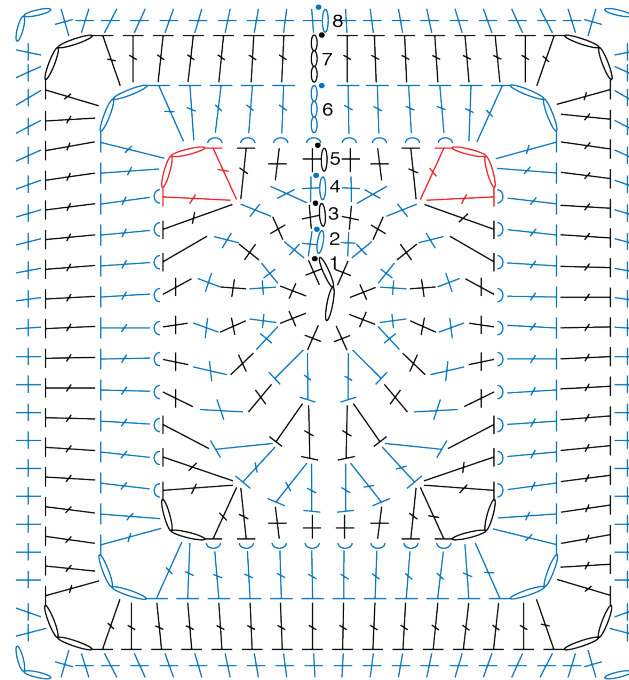


Optional: Fleece lining: With Skip Stitch Blade and Rotary Cutter, create holes along fleece edging approx ¼" [1 cm] away from edge of fleece.

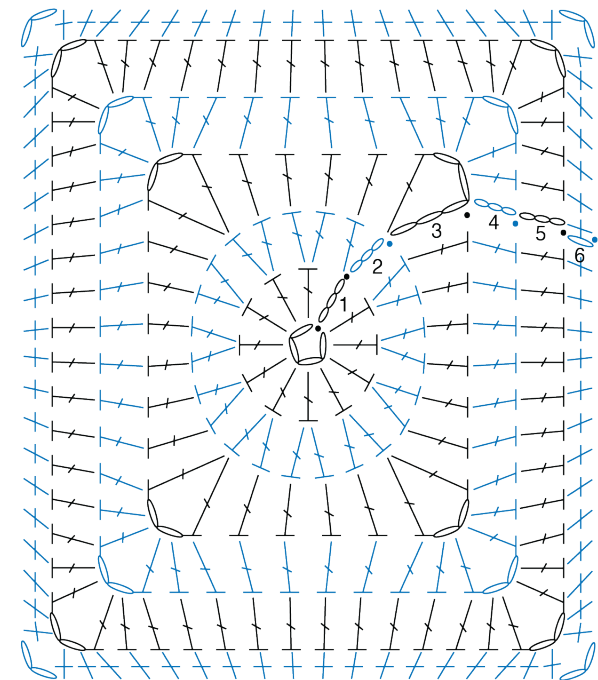
Place crochet Blanket over fleece lining.

Working through both thick-nesses, join A with sl st at corner ch-2 sp and corner of fleece. Ch 1. Work sc around edge of Blanket and fleece tog, having 3 sc in corners.

(Tip: Work 2 sc for every hole in the fleece). Join with sl st to first sc. Fasten off.



REINDEER GRANNY MOTIF



SOLID GRANNY MOTIF

STITCH KEY

- = chain (ch)
- = slip stitch (sl st)
- + = single crochet (sc)
- ┌ = half double crochet (hdc)
- └ = double crochet (dc)
- ⌋ = worked in back loop only