



 CROCHET | SKILL LEVEL: **BEGINNER**

SIZES

To fit chest measurement

6/12 mos 17-18" [43-45.5 cm]

18/24 mos 19-20" [48-51 cm]

GAUGE

14 sts and 10 rows = 4" [10 cm] in pattern.

INSTRUCTIONS

The instructions are written for smaller size. If changes are necessary for larger sizes the instructions will be written thus (). Numbers for each size are shown in the same color throughout the pattern. When only one number is given in black, it applies to all sizes.

Chain (ch) **62 (66)**.

1st row: (Right side – RS). 1 single crochet (sc) in 4th ch from hook (skipped ch-3 counts as double crochet – dc). *1 dc in next ch. 1 sc in next ch. Repeat (rep) from * to end of row. Turn. **60 (64)** stitches (sts).

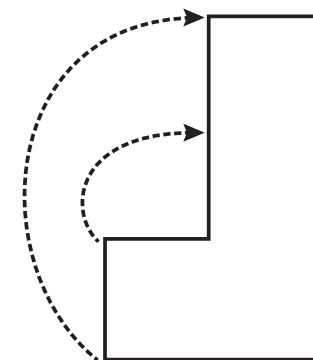
2nd row: Ch 3 (counts as dc). 1 sc in next dc. *1 dc in next sc. 1 sc in next dc. Rep from * to end of row. Turn.

Rep last row for pattern (pat) until work from beginning (beg) measures approximately (approx) **9 (10)" [23 (25.5) cm]**, ending on a wrong side (WS) row.

Next row: Pat across first **32 (36)** sts. **Turn.** Leave remaining (rem) sts unworked. Place marker at end of row.

Continue (cont) in pat on these **32 (36)** sts until work from marker measures approx 17" [43 cm], ending on a wrong side WS row. Fasten off.

Place marker on left edge of work **9 (10)" [23 (25.5) cm]** down from last row. Fold work, sewing together (tog) as seen in diagram.



MATERIALS

Bernat® Baby Blanket Tiny™ (3.5 oz/100 g; 316 yds/288 m)

Sizes	6/12	18/24	mos
Wildflowers (14011)	1	2	ball(s)

Size U.S. 7 (4.5 mm) crochet hook **or size needed to obtain gauge.**
Stitch marker.

ABBREVIATIONS:

Approx = Approximate(ly)
Beg = Begin(ning)
Ch = Chain(s)
Cont = Continue(ity)

Dc = Double crochet
Pat = Pattern
Rep = Repeat
Rem = Remai(ning)
RS = Right side

Sc = Single crochet
St(s) = Stitch(es)
Tog = Together
WS = Wrong side