



ABBREVIATIONS: yarnspirations.com/abbreviations

Alt = Alternate(ing)

Approx = Approximate(ly)

Beg = Begin(ning)

Cont = Continue

Inc = Increase

K = Knit

K2tog = Knit next 2 stitches together.

Kfb = Increase 1 stitch by knitting into front and back of next stitch

P = Purl

Pat = Pattern

Rem = Remain(ing)

Rep = Repeat

Rnd(s) = Round(s)

RS = Right side

St(s) = Stitch(es)

Ssk = Slip next 2 stitches knitwise one at a time. Pass them back onto left-hand needle, then knit through back loops together.

Tog = Together



SIZES

To fit baby sizes **6-12** (**18-24**) months.

GAUGE

12 sts and 16 rows = 4" [10 cm] in stocking st with larger needles.

INSTRUCTIONS

The instructions are written for smaller size. If changes are necessary for larger size the instructions will be written thus (.). Numbers for each size are shown in the same color throughout the pattern. When only one number is given in black, it applies to both sizes.

HAT

With smaller needles and MC, cast on **50** (**54**) sts.

1st row: (RS). K2. *P2. K2. Rep from * to end of row.

2nd row: P2. *K2. P2. Rep from * to end of row.

Rep last 2 rows of (K2. P2) ribbing until work from beg measures approx 1" [2.5 cm], ending with a 2nd row and inc **0** (**1**) st in center of last row. **50** (**55**) sts.

Change to larger needles and beg with a knit row, proceed in stocking st until work from beg measures **5½** (**6**)" [**14** (**15**) cm], ending on a purl row.

MATERIALS

Bernat® Softee® Baby Chunky™ (5 oz/140 g; 155 yds/142 m)

| Sizes | 6-12 | 18-24 | mos |
|---|------|-------|---------|
| Main Color (MC) Cream Puff (96006) | 1 | 2 | ball(s) |
| Contrast A Nighty Night (96017) | 1 | 1 | ball |

Sizes U.S. 10½ (6.5 mm) and U.S. 11 (8 mm) knitting needles. Set of four size U.S. 10½ (6.5 mm) double-pointed knitting needles **or sizes needed to obtain gauge. Mittens:** 1 stitch marker. 2 safety pins.

Size 18-24 mos only: Next row: *K2tog. K9. Rep from * to end of row. 50 sts.

Next row: Purl.

Both sizes: Shape top: 1st row: (RS). *K2tog. K6. ssk. Rep from * to end of row. 40 sts.

2nd and alt rows: Purl.

3rd row: *K2tog. K4. ssk. Rep from * to end of row. 30 sts.

5th row: *K2tog. K2. ssk. Rep from * to end of row. 20 sts.

7th row: *K2tog. ssk. Rep from * to end of row. 10 sts. Break yarn, leaving a long end. Thread end through rem sts and draw up tightly. Fasten securely. Using end, sew a center back seam 2" [5 cm] long.

Bottom ribbing: With smaller needles, pick up and knit 38 (42) sts evenly across lower edge of hat.

1st row: (RS). K2. *P2. K2. Rep from * to end of row.

2nd row: P2. *K2. P2. Rep from * to end of row.

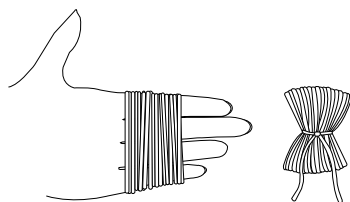
Rep last 2 rows of (K2. P2) ribbing for 1" [2.5 cm]. Cast off in ribbing.

Ties (make 2).

With pair of smaller double-pointed knitting needles and MC, cast on 4 sts. **Do not** turn. *Slide sts to other end of needle. K4. Rep from * until cord measures 6" [15 cm]. Break yarn and draw tightly through rem sts. Sew to each bottom corner of Hat as shown in photo.

Pompoms (make 2 each with MC and A).

Wind yarn around 4 fingers approx 100 times. Remove from fingers and tie tightly in center. Cut through each side of loops Trim to smooth round shape. Attach A pompoms to each side of Hat as shown in photo. Attach MC pompoms to ends of each tie as shown in photo.



MITTS (make 2 alike)

Cuff: With double-pointed needles and MC, cast on 20 (24) sts. Join in rnd, placing marker on first st.

1st rnd: *K2. P2. Rep from * around. Rep 1st rnd for 1" [2.5 cm]. Knit 4 rnds.

Shape thumb: 1st row: K3 (4). Kfb. K2. Kfb. Knit to end of rnd.

2nd rnd: Knit.

3rd rnd: K3 (4). Kfb. K4. Kfb. Knit to end of rnd. 24 (28) sts.

4th rnd: Knit.

Size 18-24 mos only: Next rnd: K4. Kfb. K6. Kfb. Knit to end of rnd. 30 sts.

Next rnd: Knit.

All sizes: Next rnd: K3 (4). Place next 6 (8) sts onto a safety pin for Thumb. Cast on 2 sts. Knit to end of rnd. 20 (24) sts.

Knit in rnds until work from beg measures approx 4½ (5½)" [11.5 (14) cm].

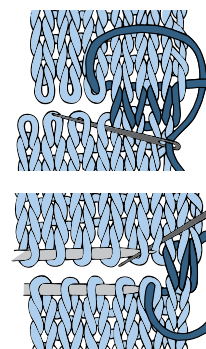
Shape top: 1st row: K3 (4). ssk. K2tog. K6 (8). ssk. K2tog. K3 (4).

2nd row: K2 (3). ssk. K2tog. K4 (6). ssk. K2tog. K2 (3).

3rd row: K1 (2). ssk. K2tog. K2 (4). ssk. K2tog. K1 (2). 8 (12) sts rem.

Size 18-24 mos only: Next rnd: K1. ssk. K2tog. K2. ssk. K2tog. K1. 8 sts rem.

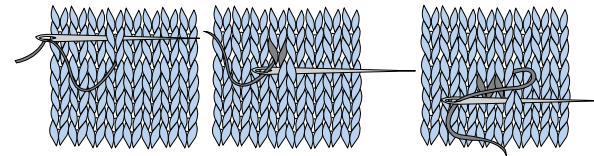
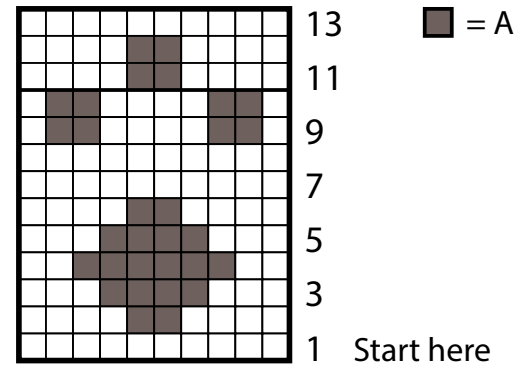
Both sizes: Graft 2 sets of 4 sts tog.



Thumb: K6 (8) from safety pin. Pick up and knit 2 sts at base of thumb. Divide 8 (10) sts onto 3 needles. Join in rnd, placing marker on first st. Knit in rnds for 1¼ (1½)" [3 (4) cm].

Next rnd: *K2tog. Rep from * around. Break yarn, leaving a long end. Thread end through rem 4 (5) sts. Draw up and fasten securely.

With A, follow chart on page 3 to work duplicate st embroidery on back of Mitten, beg 1 row above ribbing.



Duplicate St Embroidery