



CROCHET | SKILL LEVEL: **EASY**

ABBREVIATIONS

Approx = Approximately

Beg = Beginning

Ch = Chain(s)

Dc = Double crochet

Hdc = Half double crochet

Pat = Pattern

Rep = Repeat

Rem = Remaining

Rnd(s) = Round(s)

RS = Right side

Sc = Single crochet

Sp(s) = Space(s)

St(s) = Stitch(es)

WS = Wrong side

MEASUREMENTS

Approx 32" x 38" [81 x 96.5 cm].

GAUGES

16 sc and 20 rows = 4" [10 cm].

16 sc and 10½ rows = 4" [10 cm] in pat.

INSTRUCTIONS

Notes: To change color, work to last 2 loops on hook and draw new color through last 2 loops, then proceed in new color.

Ch 3 at beg of rows counts as dc.

With MC, ch 150.

See diagram on page 2.

1st row: (RS). 1 dc in 4th ch from hook (counts as 2 dc). 1 dc in each ch to end of chain. 148 sts. Turn.

2nd row: Ch 1. 1 sc in each dc to end of row. Join A. Turn.

3rd row: With A, ch 1. (1 sc. Ch 3. 1 dc) all in first sc. *Skip next 2 sc. (1 sc. Ch 3. 1 dc) all in next sc. Rep from * to last 3 sc. Skip next 2 sc. 1 sc in last sc. Turn.

4th row: Ch 3. *1 sc in next ch-3 sp. Ch 3. Rep from * to last ch-3 sp. 1 sc in last ch-3 sp. 1 dc in last sc. Join MC. Turn.

MATERIALS

Bernat® Forever Fleece Finest™ (9.9 oz/280 g; 888 yds/812 m)

Main Color MC Aqua Heather (18001) **1 ball or 475 yds/432 m**

Contrast A Sandy Heather (18002) **1 ball or 475 yds/432 m**

Size U.S. 7 (4.5 mm) Susan Bates® Silvalume® crochet hook **or size needed to obtain gauge.** Susan Bates® yarn needle.

5th row: With MC, ch 3. 1 dc in first dc. 1 dc in next sc. *2 dc in next ch-3 sp. 1 dc in next sc. Rep from * to last dc. 2 dc in top of turning ch. Turn.

Rep 2nd to 5th rows for pat until Blanket measures approx 31" [79 cm], ending on a 2nd row of pat. Fasten off.

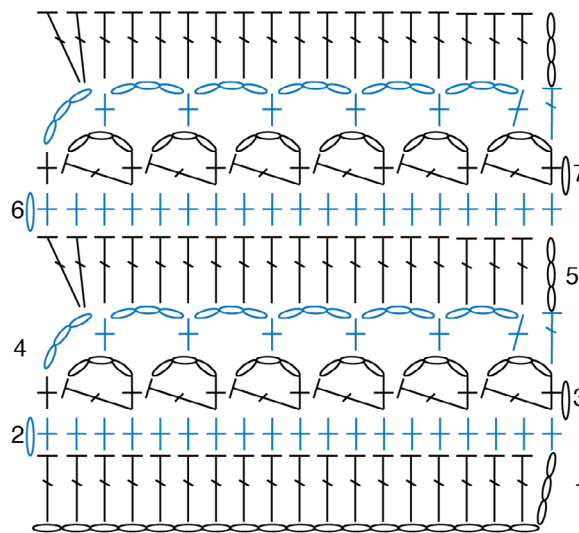
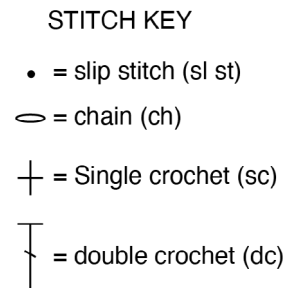
Top Edging: 1st row: (RS). Join MC with sl st in top right corner of Blanket. Ch 1. Work 1 row of sc evenly across top edge to opposite corner. Turn.

2nd row: Ch 3 (counts as dc). 1 dc in each sc across. Fasten off.

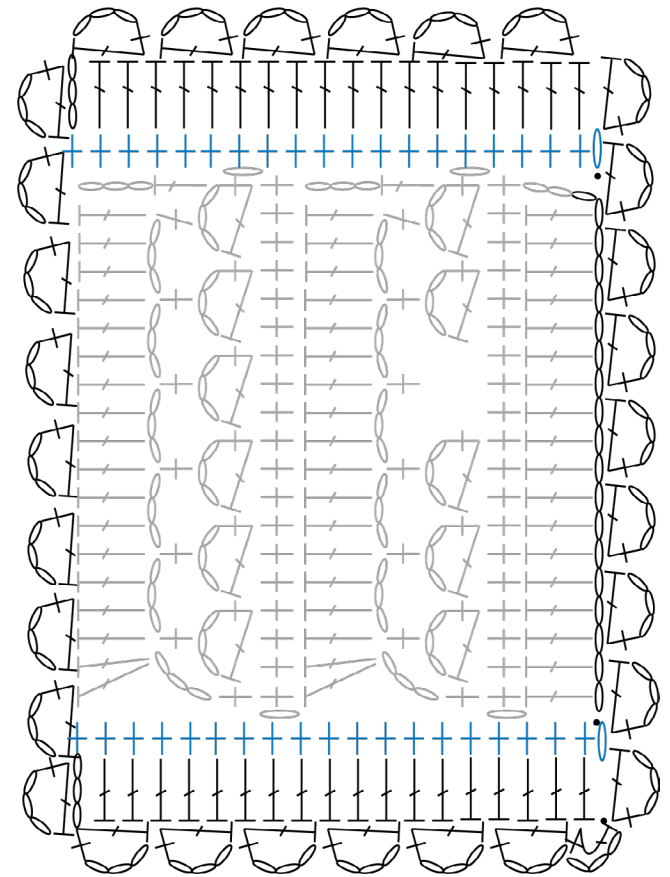
Bottom Edging: Work as for Top Edging, joining MC in bottom left corner.

Outer Edging: With RS facing, join A with sl st in bottom right corner of Blanket. Ch 1. (1 sc. Ch 3. 1 dc) all in same sp. (1 sc. Ch 3. 1 dc) all in side of next sc of Bottom Edging. *(1 sc. Ch 3. 1 dc) all in next rem loop of foundation ch. Skip next 2 loops. Rep from * across side ending with (1 sc. Ch 3. 1 dc) all in last loop. (1 sc. Ch 3. 1 dc) all in side of next dc of Top Edging. (1 sc. Ch 3.

1 dc) all in top of same dc. **Skip next 2 dc. (1 sc. Ch 3. 1 dc) all in next dc.** Rep from ** to ** to next corner dc. (1 sc. Ch 3. 1 dc) all in next corner dc. (1 sc. Ch 3. 1 dc) all in side of same dc. (1 sc. Ch 3. 1 dc) all in next st of side. Rep from ** to ** ending with (1 sc. Ch 3. 1 dc) all in last st. (1 sc. Ch 3. 1 dc) all in side of next dc of Bottom Edging. (1 sc. Ch 3. 1 dc) all in top of same dc. Rep from ** to ** across Bottom Edging ending with (1 sc. Ch 3. 1 dc) all in last st. Join with sl st to first sc. Fasten off.



REDUCED SAMPLE OF BLANKET



REDUCED SAMPLE OF EDGING

Rep rows 2-5