



CROCHET | SKILL LEVEL: **INTERMEDIATE**

ABBREVIATIONS

Approx =	Dc = Double crochet	Sp(s) = Space(s)
Approximately	Rem = Remain(ing)	St(s) = Stitch(es)
Beg = Begin(ning)	Rep = Repeat	Yoh = Yarn over hook
Ch = Chain(s)	RS = Right side	
Cont = Continue(ity)	Sl st = Slip stitch	

MEASUREMENT

Approx 48" [122 cm] square.

GAUGE

13 dc and 6 rows = 4" [10 cm].

INSTRUCTIONS

Notes:

- Ch 3 at beg of row counts as dc.
- When working from chart, wind small balls of the colors to be used, one for each separate area of color in the design. Start new colors at appropriate points. To change color, work to last 2 loops on hook, yoh with new color. Pull through 2 loops on hook to complete st and proceed in new color.

With A, ch 6. See diagram and Chart on page 2.

1st row: (RS) 1 dc in 4th ch from hook. 1 dc in each of next 2 ch. Turn. 1 block made.

2nd row: Ch 6. 1 dc in 4th ch from hook. 1 dc in each of next 2 ch – beg block made. (Sl st. Ch 3. 3 dc) in next ch-3 sp - block made. Turn. 2 blocks.

3rd row: Beg block. (Block in next ch-3 sp) twice. Turn. 3 blocks.

4th row: Beg block. (Block in next ch-3 sp) 3 times. Turn. 4 blocks.

5th row: Beg block. (Block in next ch-3 sp) 4 times. Turn. 5 blocks.

6th row: Beg block. (Block in next ch-3 sp) 5 times. Turn. 6 blocks.

7th row: Beg block. (Block in next ch-3 sp) 6 times. Turn. 7 blocks.

MATERIALS

Bernat® Forever Fleece Finer™ (9.9 oz/280 g; 385 yds/352 m)

Contrast A Teal (76051) **3 balls**

Contrast B White (76052) **1 ball**

Contrast C My Sunshine (76003) **1 ball**

Contrast D Gumdrops (76049) **1 ball**

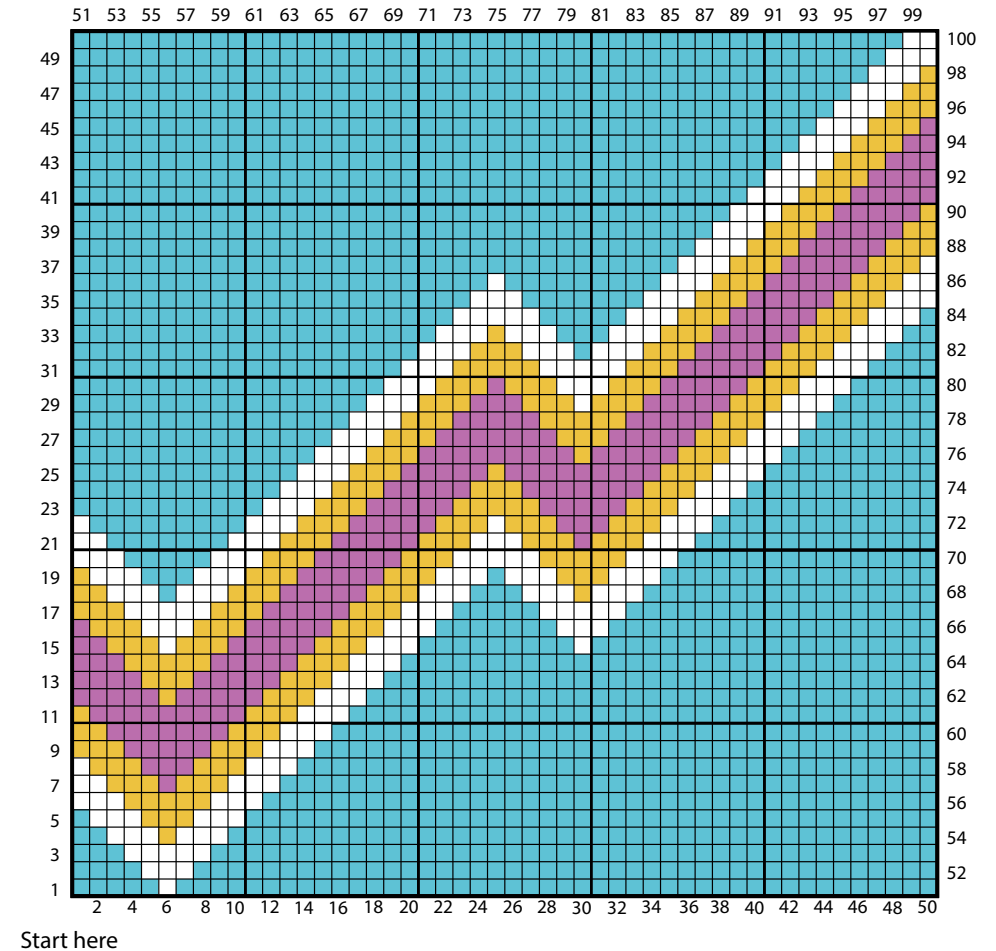
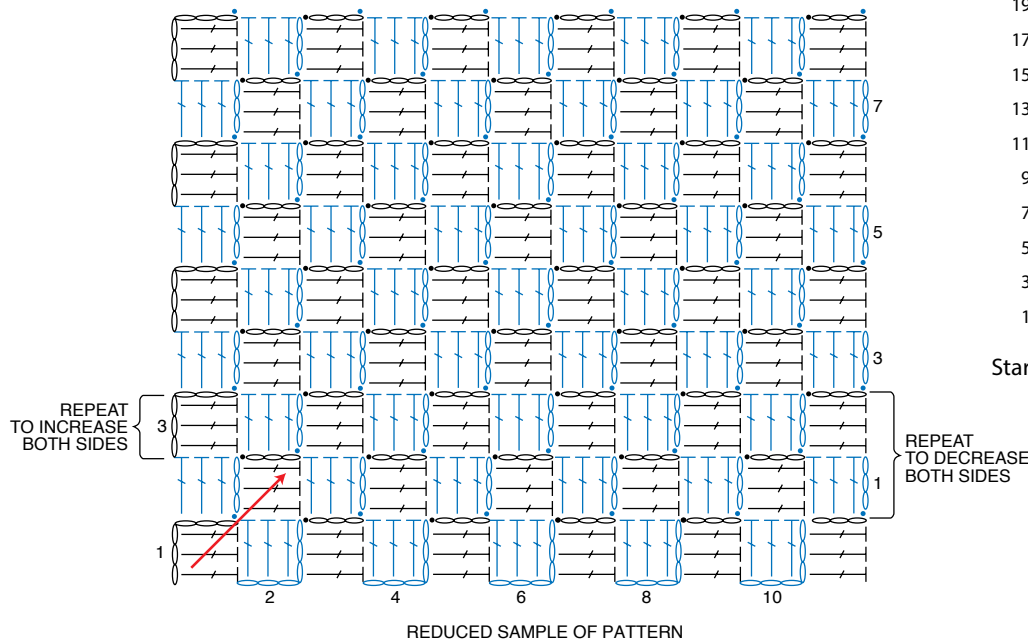
Size U.S. J/10 [6 mm] crochet hook **or size needed to obtain gauge.**
Yarn needle.

Keeping cont of Chart (each square on grid represents 1 block), cont in this manner, increasing 1 block each row until there are 50 blocks.

Begin decreases: Next row: Sl st in each of first 3 dc. *Block in next ch-3 sp. Rep from * to last ch-3 sp. Sl st in last ch-3 sp. (**Do not** make a block.) Turn.

Keeping cont of chart, rep last row until 1 block rem. Fasten off.

STITCH KEY
 ○ = chain (ch)
 ● = slip stitch (sl st)
 T = double crochet (dc)



Key
 ■ = Contrast A
 □ = Contrast B
 ■ = Contrast C
 ■ = Contrast D