



CROCHET | SKILL LEVEL: **INTERMEDIATE**

## ABBREVIATIONS

**Approx** = Approximately  
**Beg** = Begin(ning)  
**Ch** = Chain(s)  
**Cont** = Continue(ity)  
**Dc** = Double crochet  
**Rep** = Repeat  
**Rnd(s)** = Round(s)

**RS** = Right side  
**Sc** = Single crochet  
**Sl st** = Slip stitch  
**Sp(s)** = Space(s)  
**St(s)** = Stitch(es)  
**WS** = Wrong side

## MEASUREMENTS

Approx 36" x 40" [91.5 x 101.5 cm].

## GAUGE

7 sc and 8 rows = 4" [10 cm].

## INSTRUCTIONS

### BLANKET

**Note:** Use separate sections of yarn for each area of color in the Chart. When joining colors, work to last 2 loops of first color. Pick up new color under previous color on WS to avoid a hole. Draw new color through 2 loops and proceed in new color, leaving previous color on WS.

### BLANKET

With A, ch 63. Break A. Join B. With B, ch 1. (64 ch total).

Beg working Chart on page 3 in sc, reading **RS** rows from **right to left** and **WS** rows from **left to right** and noting that each square represents 1 sc as follows:

**1st row:** (RS). With appropriate color, 1 sc in each ch to end of chain. Turn. 63 sc.

**2nd row:** With appropriate color, ch 1. 1 sc in each sc across. Turn. Keeping cont of chart, rep last row until 72nd row of Chart is complete, ending on a WS row. Fasten off.

## MATERIALS

**Bernat® Baby Blanket™** (10.5 oz/300 g; 220 yds/201 m)

<b>Contrast A</b> Vanilla (04008)	<b>1 ball</b>
<b>Contrast B</b> Orange Flamingo (04800)	<b>1 ball</b>
<b>Contrast C</b> Shell Pink (04758)	<b>2 balls</b>
<b>Contrast D</b> Baby Teal (04734)	<b>1 balls</b>
<b>Contrast E</b> Little Leaf (04796)	<b>1 ball</b>

Size U.S. L/11 (8 mm) crochet hook **or size needed to obtain gauge.**  
 Yarn needle.

## FINISHING

**Top Edging: 1st row:** (RS). Join A with sl st to top right corner of Blanket. Ch 1. 1 sc in each sc across. Turn. 63 sc.

**2nd row:** Ch 1. 1 sc in each sc across. Turn.

**3rd row:** Sl st in first sc. Skip next 2 sc. 7 dc in next sc. Skip next 2 sc. Sl st in next sc. \*Sl st in next sc. Skip next 2 sc. 7 dc in next sc. Skip next 2 sc. Sl st in next sc. Rep from \* to last sc. Fasten off.

**Bottom Edging:** Work as for Top Edging across bottom edge of Blanket.

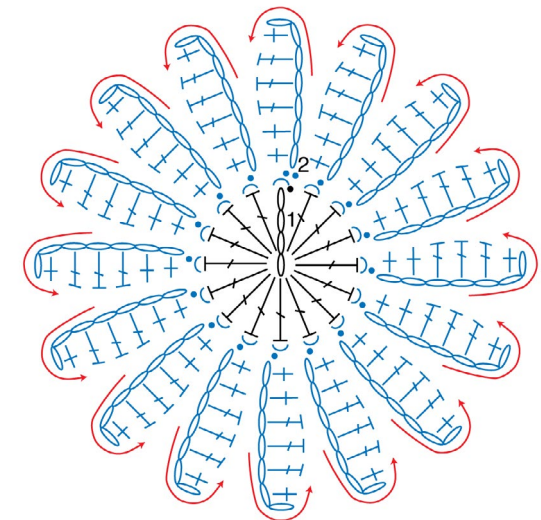
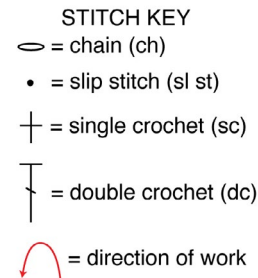
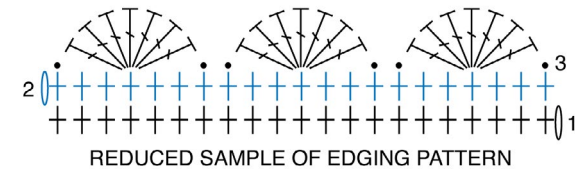
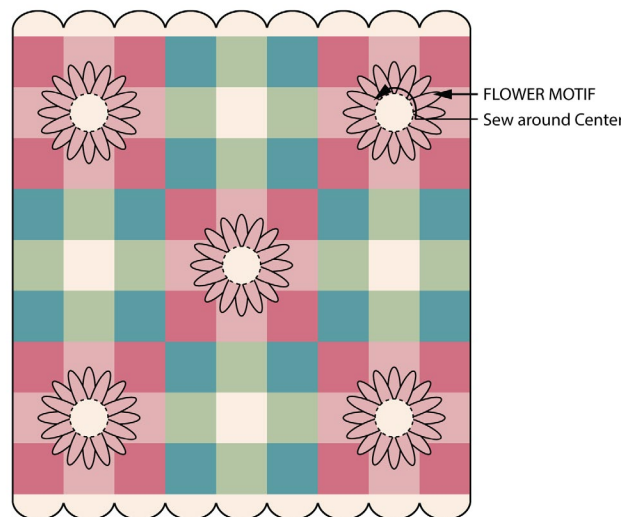
## FLOWER MOTIF (make 5)

**Center: 1st rnd:** With A, ch 4. 15 dc in 4th ch from hook (counts as 16 dc). Join with sl st to top of first dc (top of ch-3). Fasten off.

**Petals: 1st rnd:** (RS). Join C with sl st to back loop only of any dc around Center. \*Ch 7. 1 sc in 2nd ch from hook (counts as 1 sc). 1 dc in each of next 3 ch. 1 sc in each of last 2 ch. (Total of 6 sts). Sl st in back loop only of next dc around Center - Petal made. Rep from \* 15 times more ending with sl st in same sp as first sl st. (Total of 16 Petals). Fasten off.

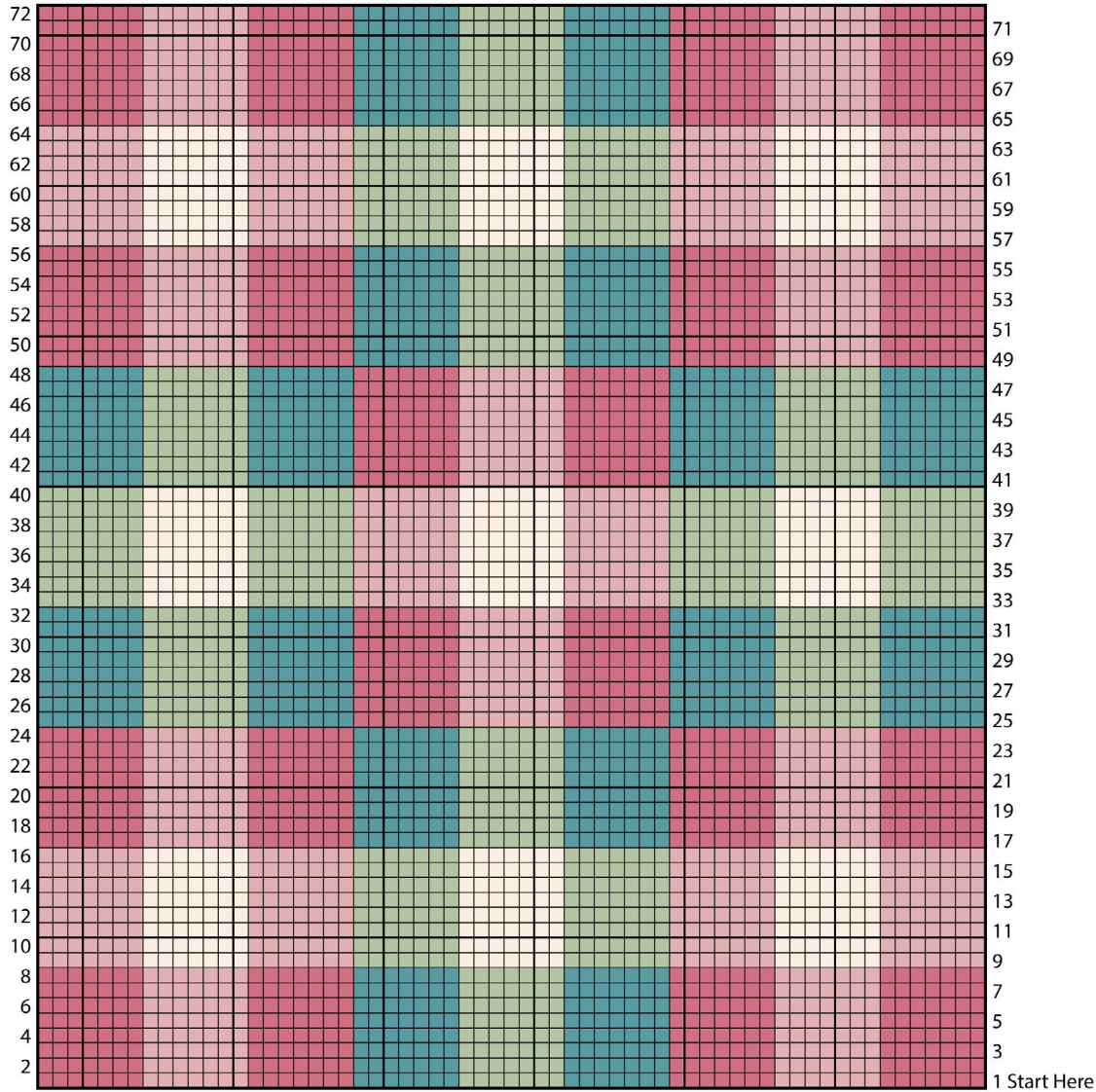
With A, join Flower Motifs to Blanket centered on squares, sewing around Center and allowing Petals to hang freely, as shown in Assembly Diagram.

ASSEMBLY DIAGRAM



FLOWER MOTIF

**CHART**



**KEY**

- = A
- = B
- = C
- = D
- = E



**NOTE:**

•Each square represents 1 sc.