



CROCHET | SKILL LEVEL: **EASY**

## ABBREVIATIONS

<b>Approx</b> =	<b>Rep</b> = Repeat	<b>St(s)</b> = Stitch(es)
Approximately	<b>RS</b> = Right side	<b>WS</b> = Wrong side
<b>Ch</b> = Chain(s)	<b>Sc</b> = Single crochet	
<b>Dc</b> = Double crochet	<b>Sp(s)</b> = Space(s)	

## MEASUREMENTS

Approx 34" x 38" [86.5 x 96.5 cm].

## GAUGE

7 dc and 4 rows = 4" [10 cm].

## INSTRUCTIONS

With A, ch 65.

**1st row:** (WS). 1 dc in 4th ch from hook and each ch to end of chain. Turn. 63 dc.

**\*\*2nd row:** Ch 1. 1 sc in each of first 7 dc. \*Ch 2. Skip next dc. 1 sc in each of next 7 dc. Rep from \* to end of row. Turn.

**3rd row:** Ch 1. 1 sc in each of first 6 sc. \*Ch 2. Skip next sc. 1 sc in next ch-2 sp. Ch 2. Skip next sc. 1 sc in each of next 5 sc. Rep from \* to last sc. 1 sc in last sc. Turn.

**4th row:** Ch 1. 1 sc in each of first 5 sc. \*Ch 2. Skip next sc. 1 sc in 2nd ch of next ch-2 sp. 1 sc in next sc. 1 sc in first ch of next ch-2 sp. Ch 2. Skip next sc. 1 sc in each of next 3 sc. Rep from \* to last 2 sc. 1 sc in each of last 2 sc. Turn.

**5th row:** Ch 1. 1 sc in each of first 5 sc. \*1 sc in first ch of next ch-2 sp. Ch 2. Skip next sc. 1 sc in next sc. Ch 2. Skip next sc. 1 sc in 2nd ch of next ch-2 sp. 1 sc in each of next 3 sc. Rep from \* to last 2 sc. 1 sc in each of last 2 sc. Turn.

**6th row:** Ch 1. 1 sc in each of first 6 sc. \*1 sc in first ch of next ch-2 sp. Ch 2. Skip next sc. 1 sc in 2nd ch of next ch-2 sp. 1 sc in each of next 5 sc. Rep from \* to last sc. 1 sc in last sc. Turn.

## MATERIALS

**Bernat® Baby Blanket™** (10.5 oz/300 g; 220 yds/201 m)

**Contrast A** Buttercup (04746) **1 ball**

**Bernat® Baby Blanket™** (3.5 oz/100 g; 72 yds/65 m)

**Contrast B** Baby Sand (03010) **2 balls**

**Contrast C** Baby Blue (03202) **2 balls**

Size U.S. L/11 (8 mm) crochet hook **or size needed to obtain gauge.**  
Stitch markers.

**7th row:** Ch 1. 1 sc in each of first 7 sc. \*1 sc in next ch-2 sp. 1 sc in each of next 7 sc. Rep from \* to end of row. Turn. 63 sc.

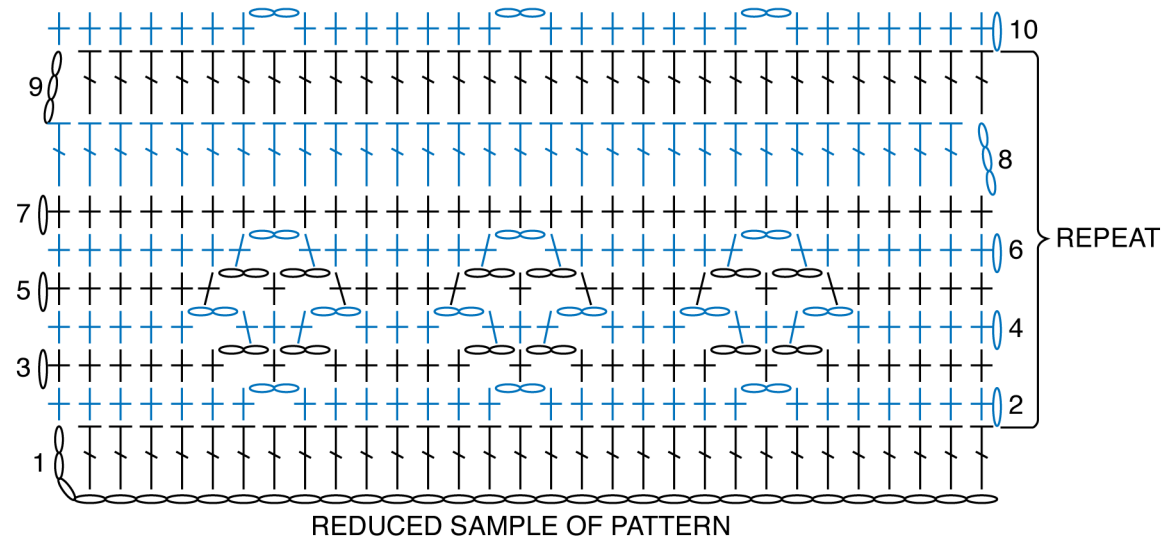
**8th row:** Ch 3. 1 dc in each sc to end of row.\*\*\* Turn. Break A. Join B.

**9th row:** With B, ch 3. 1 dc in each dc to end of row. Turn.

With B, rep 2nd to 9th rows, joining C at end of 8th row.

With C, rep 2nd to 9th rows, joining A at end of 8th row.\*\*

Rep from \*\* to \*\* once more, then from \*\* to \*\*\* once. Fasten off.



STITCH KEY

- = chain (ch)
- ⊥ = single crochet (sc)
- ⊥ = double crochet (dc)

