



MATERIALS

Bernat® Forever Fleece Finer™ (9.9 oz/280 g; 385 yds/352 m)

Light Sky (76005)

4 balls

Size U.S. J/10 (6 mm) crochet hook **or size needed to obtain gauge.**
Yarn needle.



CROCHET | SKILL LEVEL: **EASY**

ABBREVIATIONS

Approx =

Approximately

Beg = Beginning

Beg block =

Beginning block

Block = Solid block

Ch = Chain(s)

Cont = Continue(ity)

Dc = Double crochet

Mesh = Space block

Pat = Pattern

Rep = Repeat

RS = Right side

Sc = Single crochet

Sp = Space(s)

St(s) = Stitch(es)

WS = Wrong side

MEASUREMENTS

Approx 41" x 46" [104 x 117 cm].

GAUGE

12 sts and 7 rows = 4" [10 cm] in
Chart Pat.

INSTRUCTIONS

Notes:

- Ch 3 at beg of rows counts as dc.
- Ch-1 sp counts as st.
- When working into ch-1 sp, work into space.
- After last Block, each row ends with dc in last st (top of turning ch-3). Not shown on Chart.

BLANKET

Ch 141. See chart on page 2.

1st row: (RS). 1 dc in 4th ch from hook (counts as 2 dc). 1 dc each ch to end of chain. Turn. 139 dc.

1st row of Chart is complete.

Work Chart to end of chart, *reading rows from right to left on RS rows and left to right on WS rows*, noting 34-block rep will be worked twice, as follows:

2nd row: Ch 3. 1 dc in next dc – Beg Block made. *1 dc in next st. Ch 1. Skip next st – Mesh made. 1 dc in each of next 2 sts – Block made. Rep from * to last st. 1 dc in last st. Turn.

3rd to 5th rows: Ch 3. 1 dc in each st and ch-1 sp to end of row. Turn.

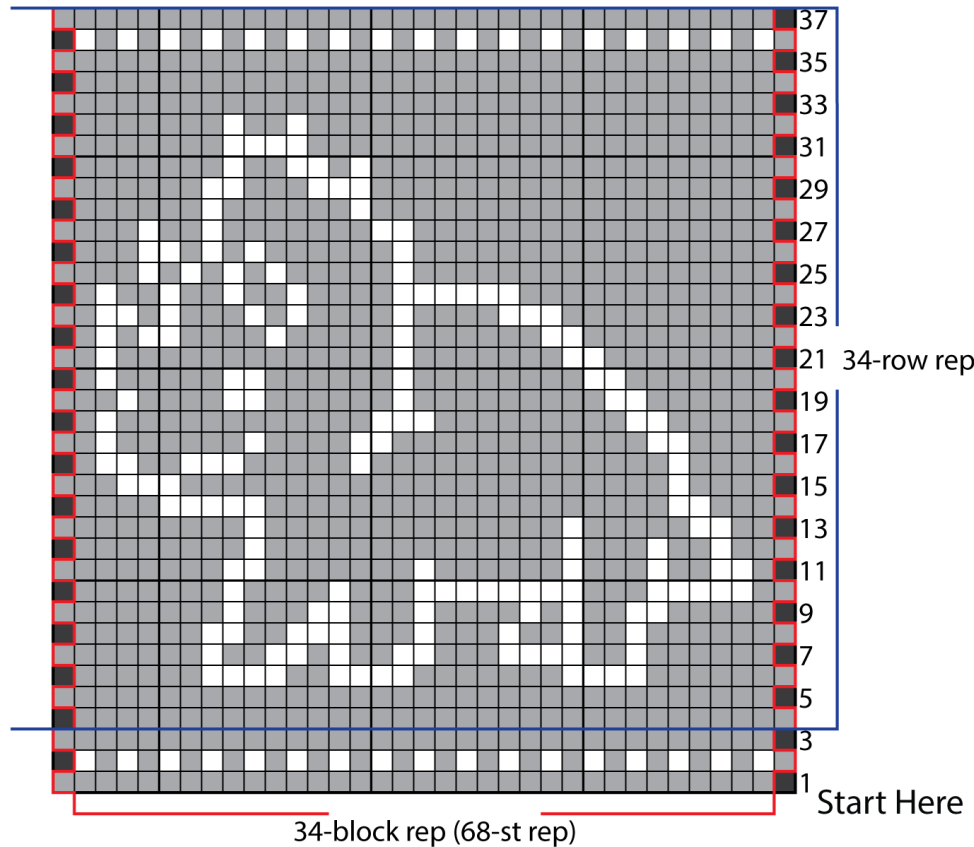
6th row: Beg Block. *(Block) 6 times. (Mesh) 4 times. (Block) twice. (Mesh) 4 times. (Block) 7 times. (Mesh) 4 times. (Block) 7 times. Rep from * once more. 1 dc in last st. Turn.

7th row: Beg Block. *(Block) 6 times. (Mesh) once. (Block) twice. (Mesh) 4 times. (Block) 3 times. (Mesh) twice. (Block) twice. (Mesh) once. (Block) once. (Mesh) twice. (Block) twice. (Mesh) once. (Block) 7 times. Rep from * to last st. 1 dc in last st. Turn.

First 7 rows of Chart are complete.

Cont to work Chart to end of chart. Rep 4th to 37th rows of Chart once more. **Do not** turn.

Edging: 1st rnd: (RS). Ch 1. Work 1 rnd of sc evenly around edge of Blanket, having 3 sc in each corner. Join with sl st to first sc. Fasten off.



Stitch Key

- = Beg Block
- = Block
- = Mesh

