



## MATERIALS

**Bernat® Softee® Baby™** (5 oz/140 g; 362 yds/331 m)

**Main Color (MC)** Pale Blue (02002) **2 balls**

**Contrast A** Little Red Wagon (54004) **3 balls**

**Contrast B** Grass Green (54003) **1 ball**

**Contrast C** Little Mouse (30010) **1 ball**

**Contrast D** Antique White (30008) **1 ball**

Size U.S. G/6 (4 mm) crochet hook **or size needed to obtain gauge.**



CROCHET | SKILL LEVEL: **INTERMEDIATE**

## ABBREVIATIONS

**Approx** = Approximately

**Beg** = Beginning

**Ch** = Chain(s)

**Cont** = Continue(ity)

**Dc** = Double crochet

**Dec** = Decrease

**Pat** = Pattern

**Rem** = Remain(ing)

**Rep** = Repeat

**Rnd(s)** = Round(s)

**RS** = Right side

**Sc** = Single crochet

**Sl st** = Slip stitch

**Sp(s)** = Space(s)

**St(s)** = Stitch(es)

**Yoh** = Yarn over hook

## MEASUREMENT

Approx 40" [101.5 cm] square.

## GAUGES

16 sc and 19 rows = 4" [10 cm].

5 blocks = 4" [10 cm] in pat.

## INSTRUCTIONS

### Notes:

- Blanket is worked diagonally from corner to corner.
- When working from chart, wind small balls of the colors to be used, one for each separate area of color in the design.
- Start new colors at appropriate points. To change color, work to last 2 loops on hook, yoh with new color. Pull through 2 loops on hook to complete st and proceed in new color.

With MC, ch 6.

See diagram on page 2 and chart on page 3.

**1st row:** (RS). 1 dc in 4th ch from hook (counts as 2 dc). 1 dc in each of last 2 ch. Turn. 1 block made.

**2nd row:** Ch 6. 1 dc in 4th ch from hook. 1 dc in each of next 2 ch - beg block made. (Sl st. Ch 3. 3 dc) in next ch-3 sp - block made. Turn. 2 blocks.

**3rd row:** Beg block. \*Block in next ch-3 sp. Rep from \* to end of row. Turn. 3 blocks.

Keeping cont of color changes in Chart (each square on grid represents 1 block), rep last row until 51st row of Chart is complete. 51 blocks.

Keeping cont of Chart, proceed as follows to dec corner:

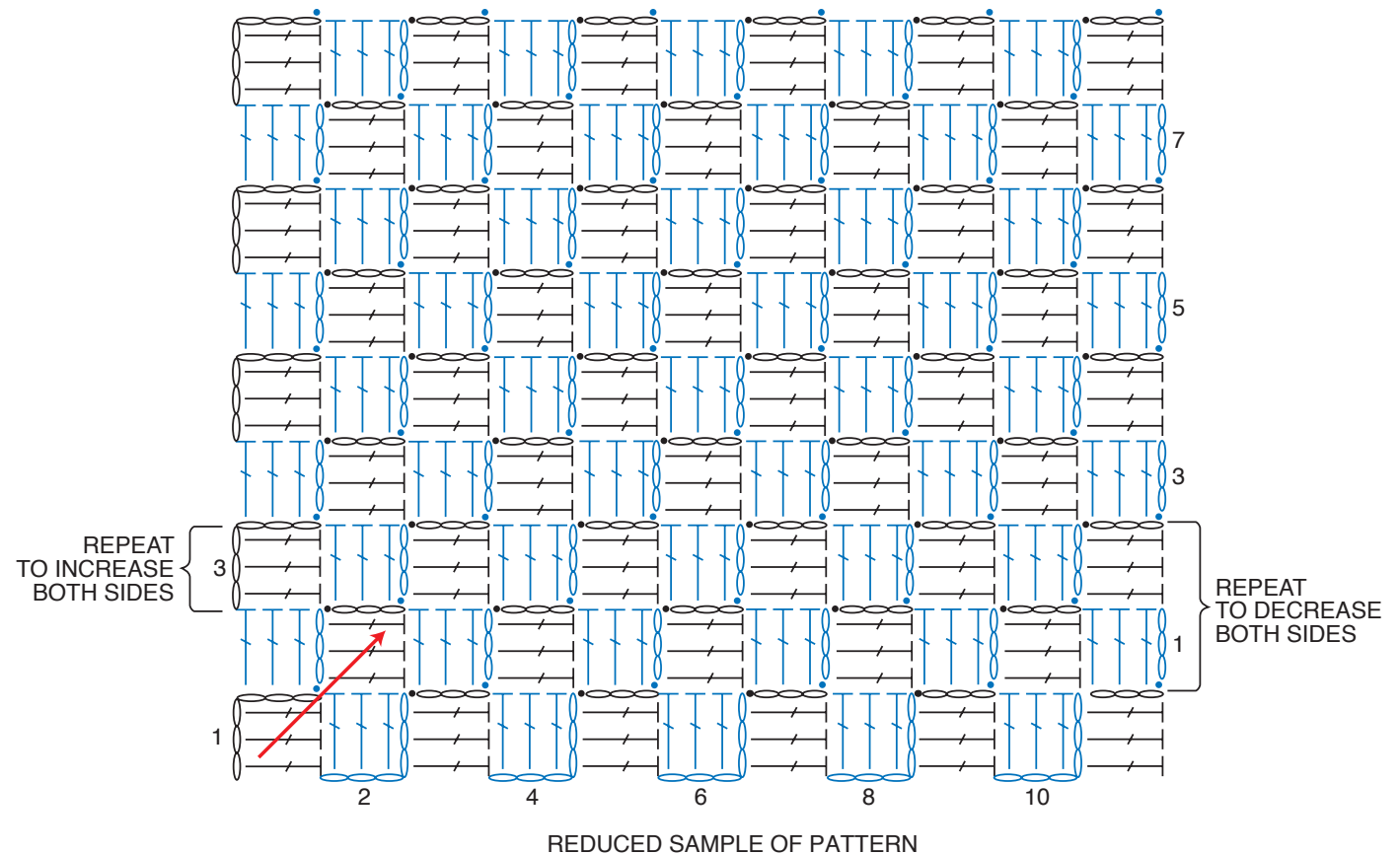
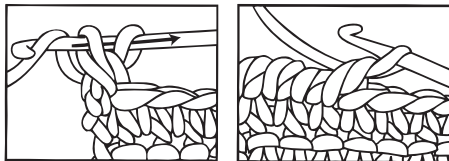
**52nd row:** Sl st in each of first 3 dc.  
 \*Block in next ch-3 sp. Rep from \* to last ch-3 sp. Sl st in last ch-3 sp. (**Do not** make a block.) Turn. Keeping cont of Chart, rep last row until 1 block rem. Fasten off.

### Border

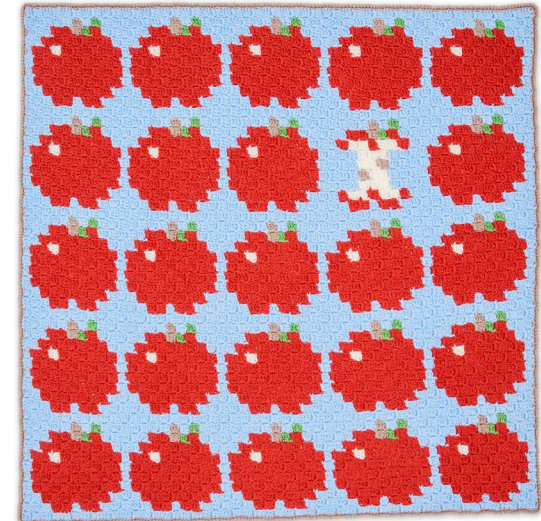
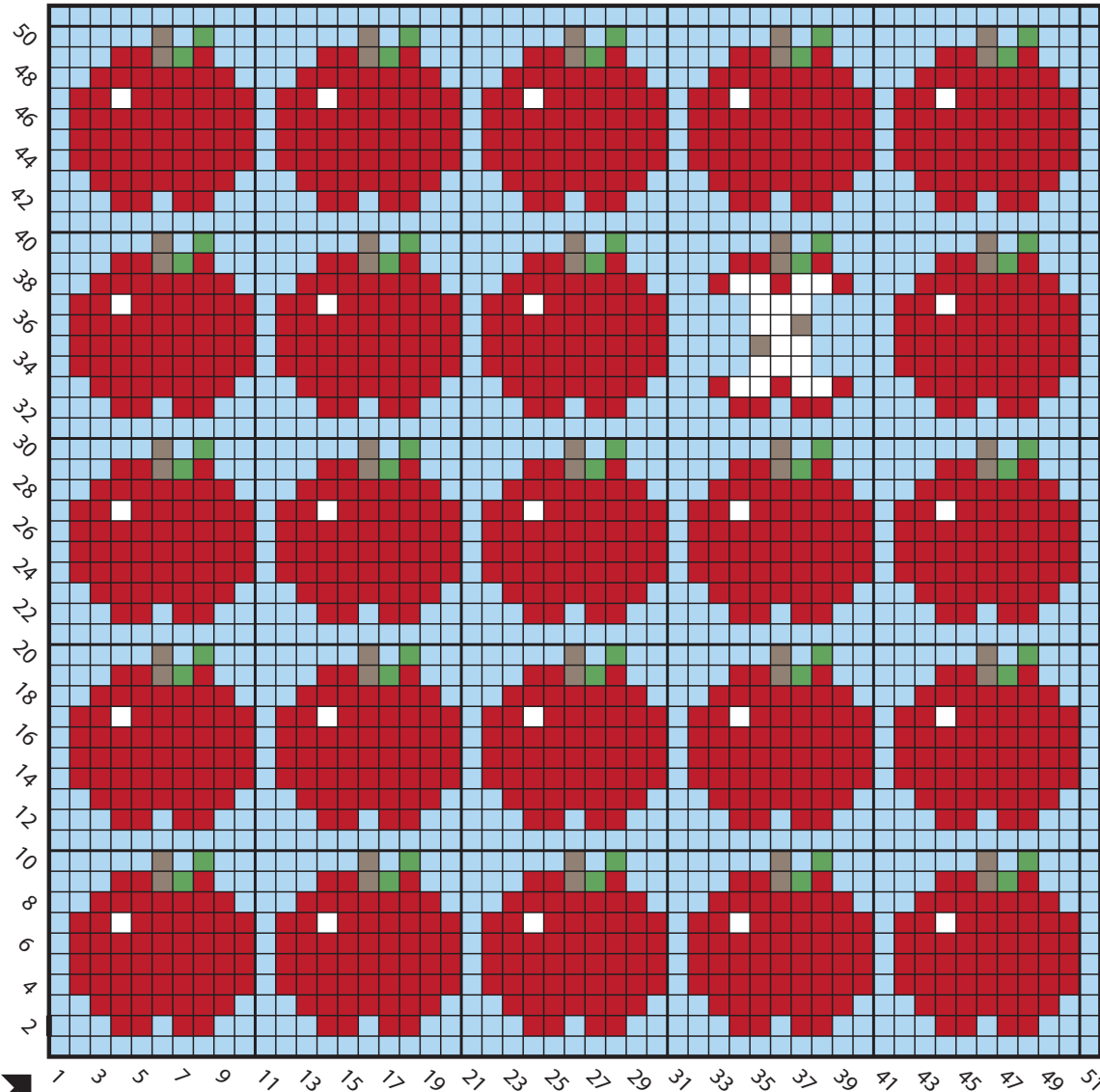
With RS facing, join C with sl st to any corner of Blanket.

**1st rnd:** Ch 1. Work 1 rnd of sc evenly around, having 3 sc in each corner. Join with sl st to first sc. **2nd rnd:** Ch 1. *Working from left to right, instead of from right to left as usual,* work 1 reverse sc in each sc around. Join with sl st to first sc. Fasten off.

### Reverse Sc Diagram



- STITCH KEY**
- = chain (ch)
  - = slip st (sl st)
  - ┆ = double crochet (dc)



Key

- = Main Color (MC)
- = Contrast A
- = Contrast B
- = Contrast C
- = Contrast D