

## BERNAT® FLOWER POWER CROCHET BLANKET



### MATERIALS

**Bernat® Baby Blanket™** (10.5 oz/300 g; 220 yds/201 m)

**Contrast A** White (04005)

**2 balls**

**Contrast B** Peach Blooms (04822)

**2 balls**

Size U.S. L/11 (8 mm) crochet hook **or size needed to obtain gauge.**  
Tapestry needle.



CROCHET | SKILL LEVEL: **INTERMEDIATE**

### ABBREVIATIONS

**Approx** = Approximately

**Beg** = Beginning

**Ch** = Chain(s)

**Cont** = Continue(ity)

**Dc** = Double crochet

**Rem** = Remain(ing)

**Rep** = Repeat

**Rnd** = Round

**RS** = Right side

**Sc** = Single crochet

**Sl st** = Slip stitch

**Sp(s)** = Space(s)

**St(s)** = Stitch(es)

**Yoh** = Yarn over hook

### MEASUREMENT

Approx 37" [94 cm] square.

### GAUGE

7 dc and 4 rows = 4" [10 cm]; save time and check your gauge.

### INSTRUCTIONS

#### Notes:

- Ch 3 at beg of row counts as dc.
- When working from chart, wind small balls of the colors to be used, one for each separate area of color in the design. Start new colors at appropriate points.
- To change color, work to last 2 loops on hook, yoh with new color. Pull through 2 loops on hook to complete st and proceed in new color.

With MC, ch 6. See diagram and Chart on page 2.

**1st row:** (RS). 1 dc in 4th ch from hook. 1 dc in each of next 2 ch. Turn. 1 block made.

**2nd row:** Ch 6. 1 dc in 4th ch from hook. 1 dc in each of next 2 ch – beg block made. (Sl st. Ch 3. 3 dc) in next ch-3 sp – block made. Turn. 2 blocks.

**3rd row:** Beg block. (Block in next ch-3 sp) twice. Turn. 3 blocks.

**4th row:** Beg block. (Block in next ch-3 sp) 3 times. Turn. 4 blocks.

**5th row:** Beg block. (Block in next ch-3 sp) 4 times. Turn. 5 blocks.

**6th row:** Beg block. (Block in next ch-3 sp) 5 times. Turn. 6 blocks.

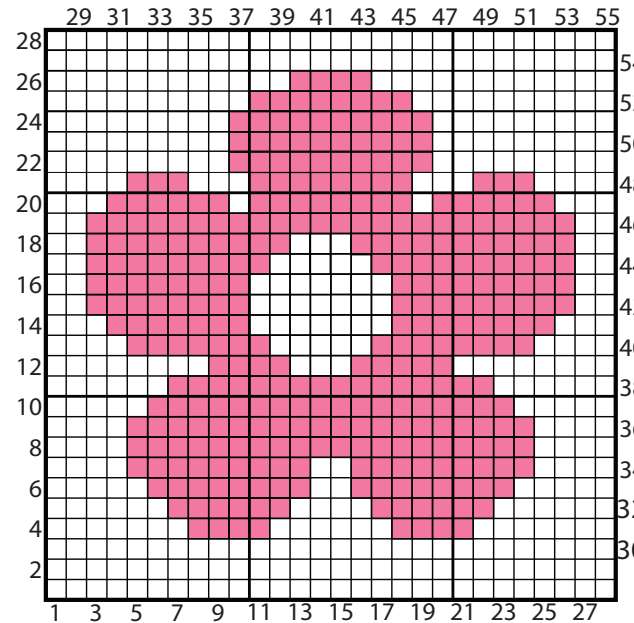
**7th row:** Beg block. (Block in next ch-3 sp) 6 times. Turn. 7 blocks.

## BERNAT® FLOWER POWER CROCHET BLANKET

Keeping cont of color changes in Chart (each square on grid represents 1 block), cont in this manner, increasing 1 block each row until there are 28 blocks – Row 28 of Chart is complete.

**Begin decreases: Next row:** Sl st in each of first 3 dc. \*Block in next ch-3 sp. Rep from \* to last ch-3 sp. Sl st in last ch-3 sp. (**Do not** make a block). Turn.

Keeping cont of chart, rep last row until 1 block rem. Fasten off.



Start Here

### Key

- = Contrast A
- = Contrast B

